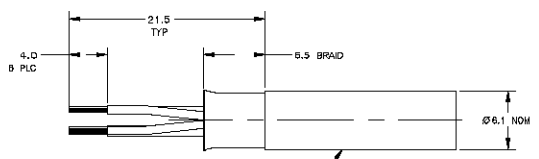


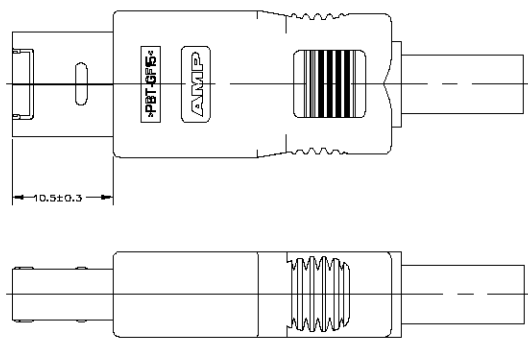
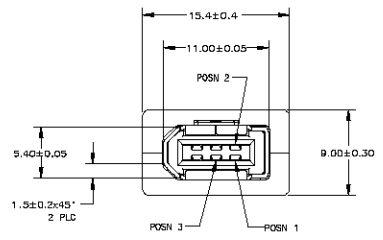
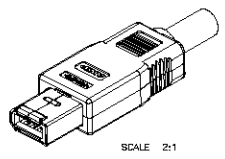
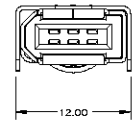
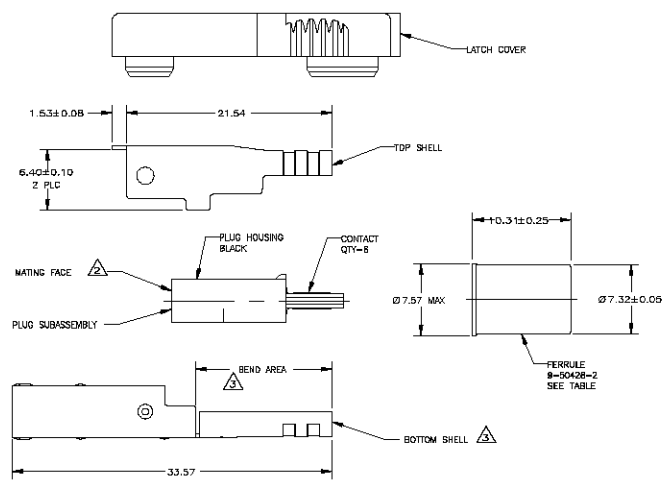
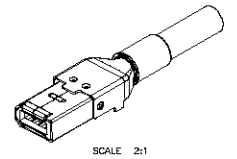
ASSEMBLED VIEW BEFORE CRIMP



CUSTOMER SUPPLIED CABLE
CABLE 378973-1, GRAY, 8 CONDUCTOR,
30/22 AWG, UNSTRIPPED IS AVAILABLE

- ⚠️ PLUG HOUSING AND COVERS: POLYESTER PBT, UL 94V-0 RATED; CONTACTS: PHOSPHOR BRONZE; SHELLS: CARBON STEEL; FERRULE: COPPER.
- ⚠️ FERRULE: 0.002-0.005 TIN OVER NICKEL; SHELLS: 0.002-0.005 TIN OVER NICKEL; CONTACTS: 0.00075 MIN GOLD OR (0.00075 MIN GOLD OVER 0.00075 MIN PALLADIUM) IN A 0.4 MIN WIDE AREA 0.82 FROM MATING FACE END OF CONTACT TIP, 0.00351 MIN TIN 5 MIN FROM OPPOSITE END, ALL OVER 0.00127 MIN NICKEL.
- ⚠️ BOTTOM SHELL SHOWN STRAIGHT, WILL BE DELIVERED WITH BEND AREA, FOR PLUG SUBASSEMBLY INSERTION.
- ⚠️ RECOMMENDED CRIMP TOOLS: PRO CRIMPER 354940-1 WITH DIE SET 58537-1 FOR Ø6.1 CABLE.

LEAD FREE



| 788513-3 | 788514-3 | 5787949-1 | 9-50428-2 | 788511-1 | GRAY | 788512-1 | GRAY | 5787950-1 |
|--|------------------|-------------------|-------------------------|-----------|-------|------------------|-------|-----------|
| TOP SHELL (1) | BOTTOM SHELL (1) | PLUG SUB-ASSY (1) | FERRULE (1) | COVER (1) | COLOR | LATCH COVER (1) | COLOR | PART NO |
| THIS DRAWING IS A CONTROLLED DOCUMENT. | | | | | | | | |
| DRAWN BY: LEI ZHOU | | | CHECKED BY: STEVEN YAO | | | DATE: 01/20/2010 | | |
| DESIGNED BY: LEI ZHOU | | | APPROVED BY: STEVEN YAO | | | DATE: 01/20/2010 | | |
| MATERIAL: PBT | | | FINISH: POLISH | | | NATURAL | | |
| APPLICATION SPEC: --- | | | SIZE: A1 | | | DATE CODE: 00779 | | |
| CUSTOMER DRAWING | | | DRAWING NO: 5787950 | | | REV: 1 | | |