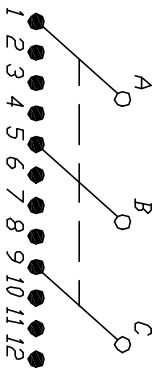
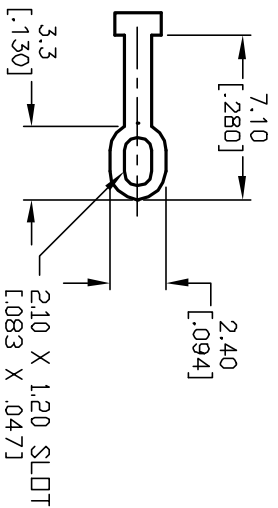


NOTES:

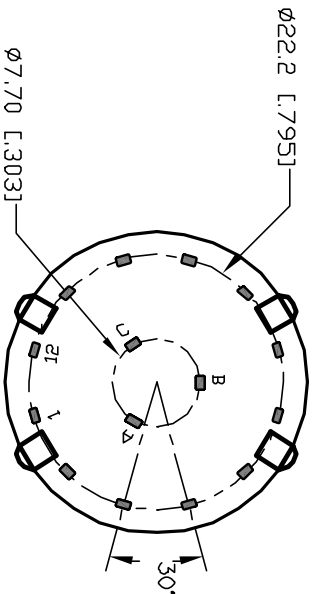
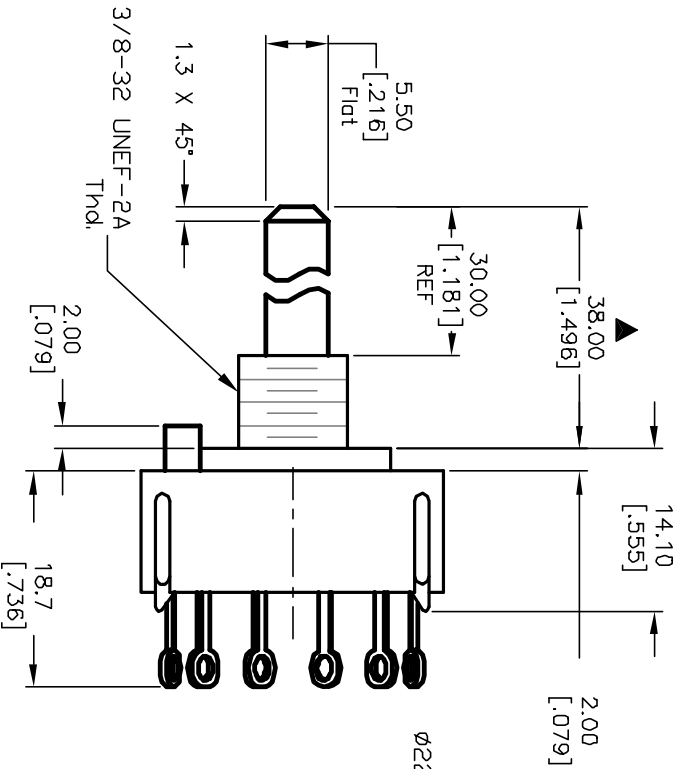
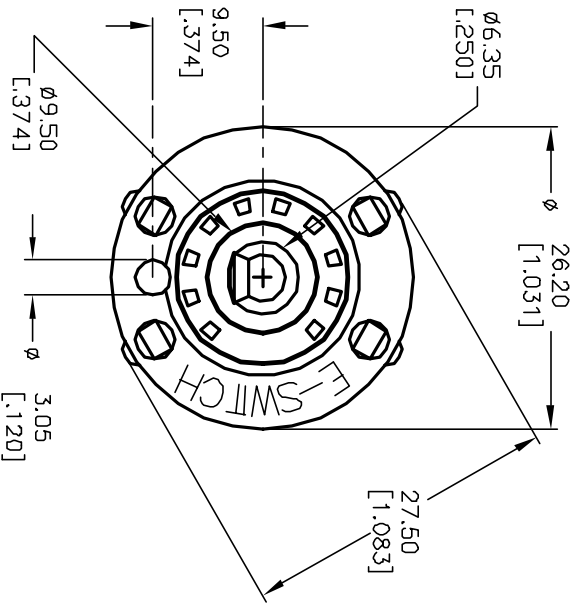
1. ALL DIMENSION IN MM [INCH]
2. GENERAL TOLERANCE: X.X=±0.4
X.XX=±0.25
3. TERM. NOS. FOR REF. ONLY
4. CONTACT RATING SWITCHING: 150mA, 250V AC/DC
350mA, 110V AC/DC
5. CONTACT MATERIAL: GOLD FLASH (AU FLASH OVER
1 MICRON OVER 2 MICRON NI)
6. OPERATING FORCE: 425±100 CM/STANDARD
7. OPERATING TEMP: -30° to 85°C
8. CIRCUIT 3P: 4 POSITIONS, 30° INDEX.
9. DIELECTRIC STRENGTH: 1000V RMS min.@Sea Level
10. DESIGNATE MAJOR DIMENSIONS
11. SUPPLIED HARDWARE: LOCK NUT AND WASHER (NOT SHOWN).



CONTACT CONFIGURATION (BBM)



TERMINATION DETAIL
SCALE 2X



B	12582	REV	DESC	PER NEW CATALOG	11/20/02	CJB
A	11312	RELEASED	FOR PRODUCTION	3/21/01	CJB	
REV.	ECN No.	DESCRIPTION		DATE	CHKD	
THE INFORMATION CONTAINED IN THIS DOCUMENT IS PROPRIETARY TO E-SWITCH AND IS NOT TO BE COPIED OR TRANSFERRED						
TITLE		SCALE		DATE	DR	DWG
KC-34-A (30.0mm)-01-N-L-F		1.5:1		3/21/01	CJB	G510262
E-SWITCH®				REV		
				B		