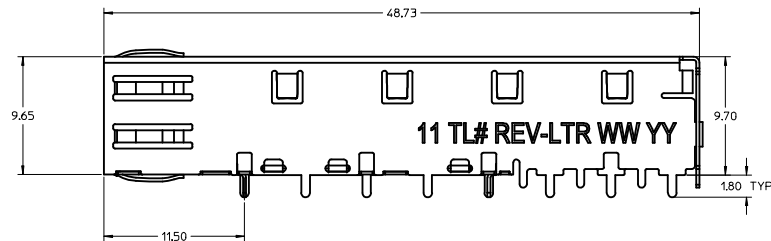
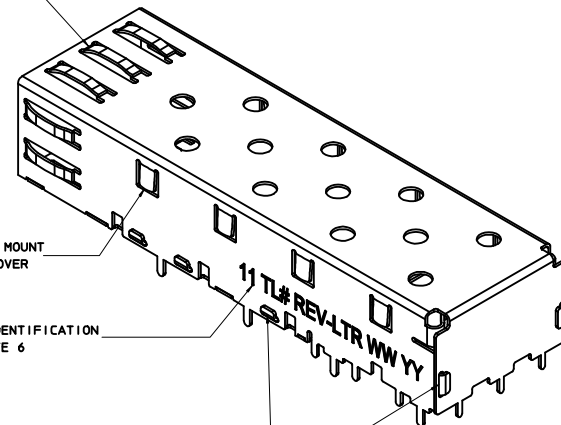


SPRING FINGER GASKET WITH TWO POINTS OF CONTACT. COMPLIES WITH (SFP) MSA BOARD AND BEZEL LOCATIONS.

TABS USED TO MOUNT LIGHT PIPE COVER

CAGE IDENTIFICATION SEE NOTE 6

ONE PIECE DESIGN SECURELY FASTENED

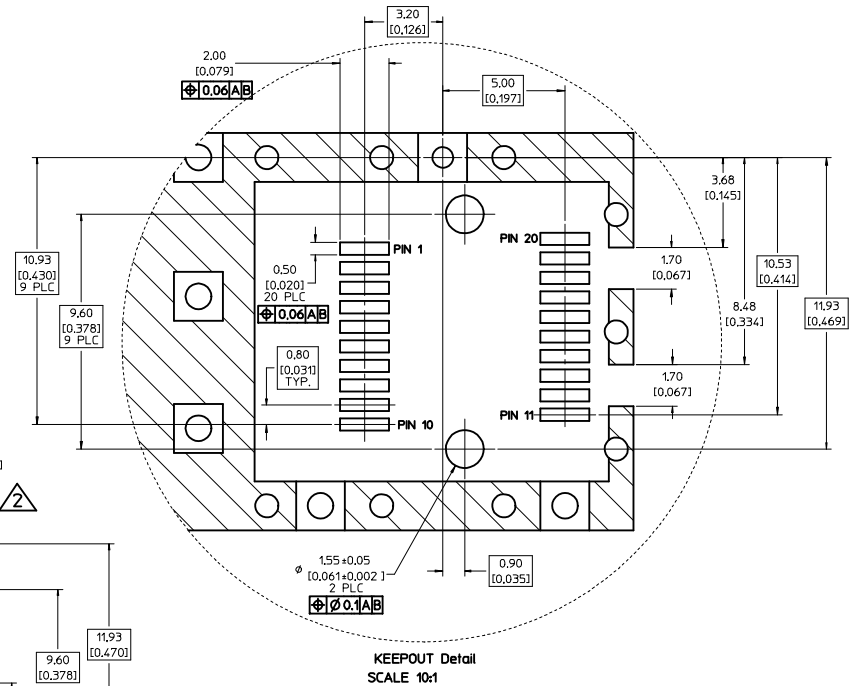
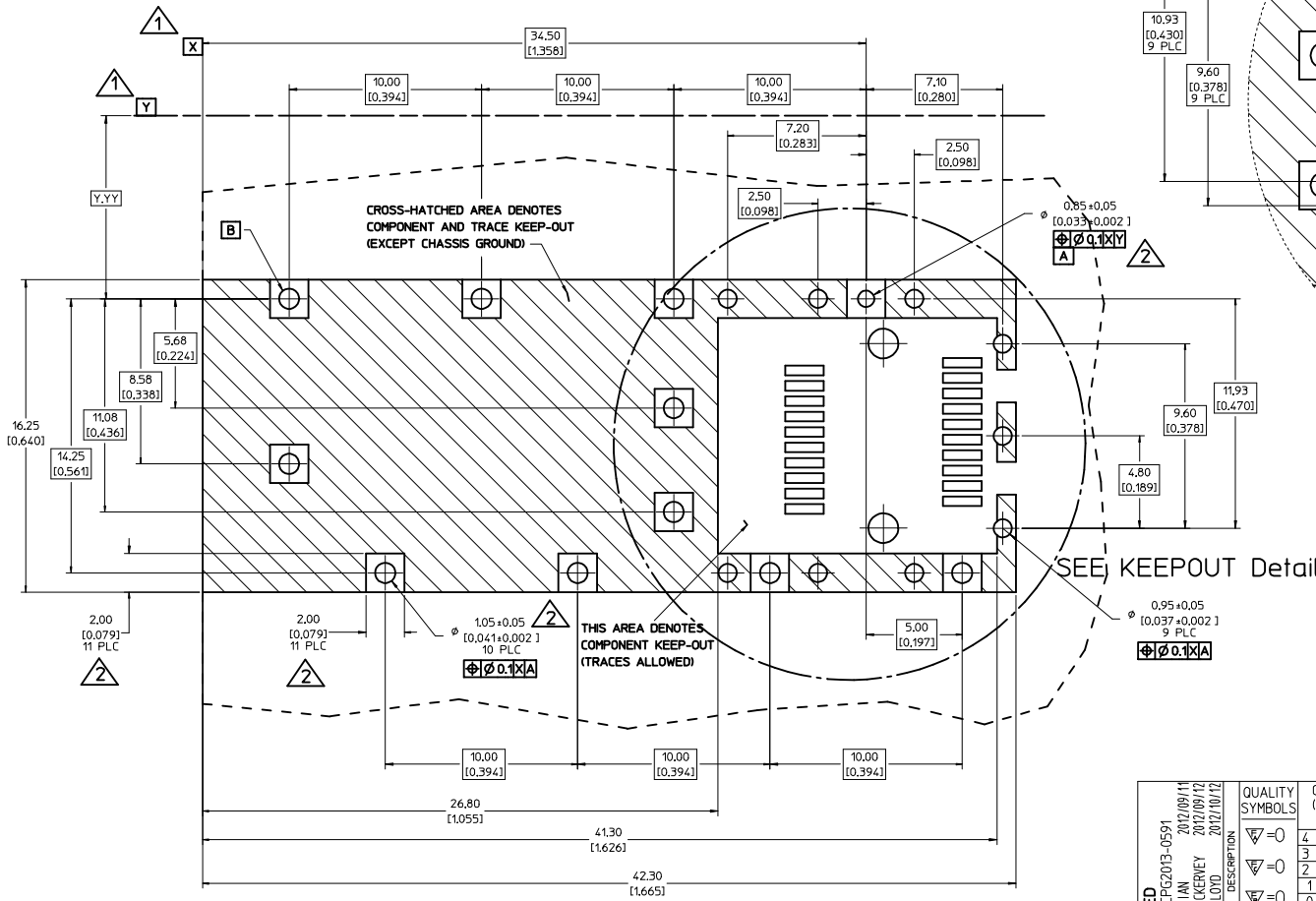


NOTES:

1. THIS CAGE IS FOR SINGLE SIDED USE ONLY.
2. CAN BE USED WITH THE FOLLOWING LIGHT PIPE PART NUMBERS:
 747260001 - LIGHT PIPE FROM BACK TO TOP (REFER TO DOCUMENT SD-74726-001)
 747260002 - LIGHT PIPE FROM SIDE TO TOP (REFER TO DOCUMENT SD-74726-002)
3. MATERIAL: COPPER ALLOY
4. PLATING: MATTE TIN
5. LEAD FREE, NO ROHS EXEMPTIONS
6. IDENTIFICATION IS STAMPED AS SHOWN ON RIGHT SIDE OF CAGE
 LAST TWO DIGITS OF PART NUMBER
 TOOLING NUMBER
 REV LETTER OF CAGE
 WW: WEEK OF THE YEAR PER ISO 8601
 YY: LAST TWO DIGITS OF THE YEAR, FOR EXAMPLE 2013 - 13
 EXAMPLE: 11 2 A 03 12

REVISED EC NO: CPG2013-0591 D DRAWN BY: CHKOMCKERVEY CHECKED BY: APPROXKLOYD DATE: 2012/09/11 DATE: 2012/10/12 DESCRIPTION:	QUALITY SYMBOLS	GENERAL TOLERANCES (UNLESS SPECIFIED):	DIMENSION STYLE	SCALE	DESIGN UNITS	THIRD ANGLE PROJECTION	
	∇=0 ∇=0 ∇=0	4 PLACES ± --- INCH 3 PLACES ± --- INCH 2 PLACES ± 0.13 INCH 1 PLACE ± 0.25 INCH 0 PLACE ± INCH	mm INCH	MM ONLY	5:1	METRIC	TITLE: 1X1 SFP TAPE AND REEL APPROVED BY: KLOYD DATE: 2012/01/05
	ANGULAR ± 1 ° DRAFT WHERE APPLICABLE MUST REMAIN WITHIN DIMENSIONS	MATERIAL NO: 747370111 DOCUMENT NO: SD-74737-0111	DRAWN BY: MMCKERVEY DATE: 2011/07/25 CHECKED BY: DATE:	SCALE: 5:1 DESIGN UNITS: METRIC	SHEET NO: 1 OF 5		
	THIS DRAWING CONTAINS INFORMATION THAT IS PROPRIETARY TO MOLEX INCORPORATED AND SHOULD NOT BE USED WITHOUT WRITTEN PERMISSION						

- 1 DATUM AND BASIC DIMENSIONS ESTABLISHED BY CUSTOMER.
- 2 PADS AND VIAS ARE CHASSIS GROUND.
- 3 HOLE LAYOUT SHOWN IS FOR SINGLE SIDED MOUNTING ONLY.
- 4 CONNECTOR PAD LAYOUT PER SFP MSA, WILL ACCOMODATE MOLEX CONNECTOR SERIES 74441 OR EQUIVALENT.



REVISED EC NO: CPG2013-0591 DRAWN BY: DRWINFOJIAN 2012/09/11 CHECKED BY: CHKOMCKERVEY 2012/09/12 APPROVED BY: APRR:KLLOYD 2012/10/12	QUALITY SYMBOLS	GENERAL TOLERANCES (UNLESS SPECIFIED)	DIMENSION STYLE	SCALE	DESIGN UNITS	THIRD ANGLE PROJECTION
	▽=0	4 PLACES ± 0.13	MM ONLY	5:1	METRIC	☉
	▽=0	3 PLACES ± 0.25				
	▽=0	2 PLACES ± 0.50				
		0 PLACE ± 1.0				
		ANGULAR ± 1.0				
		DRAFT WHERE APPLICABLE MUST REMAIN WITHIN DIMENSIONS				
			MATERIAL NO.	DOCUMENT NO.		
			747370111	SD-74737-0111		

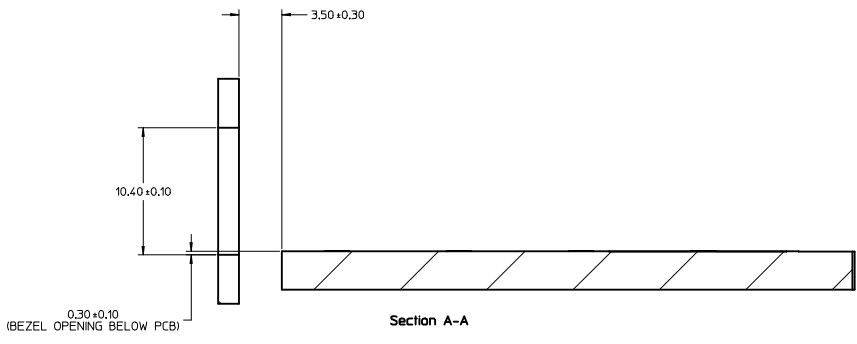
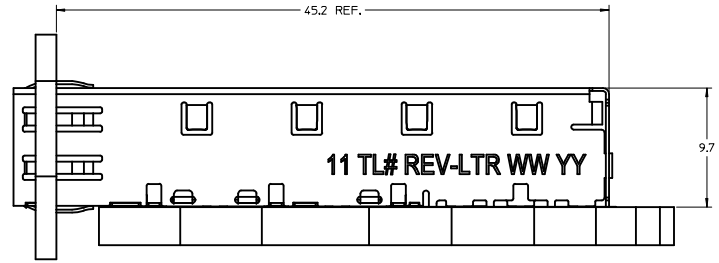
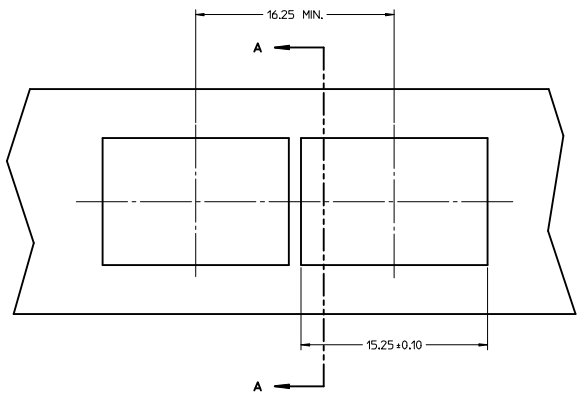
molex

TITLE 1X1 SFP TAPE AND REEL

SHEET NO. 2 OF 5

20 19 18 17 16 15 14 13 12 11 10 9 8 7 6 5 4 3 2 1

M
L
K
J
I
H
G
F
E
D
C
B
A

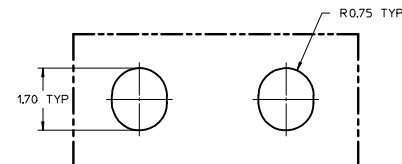
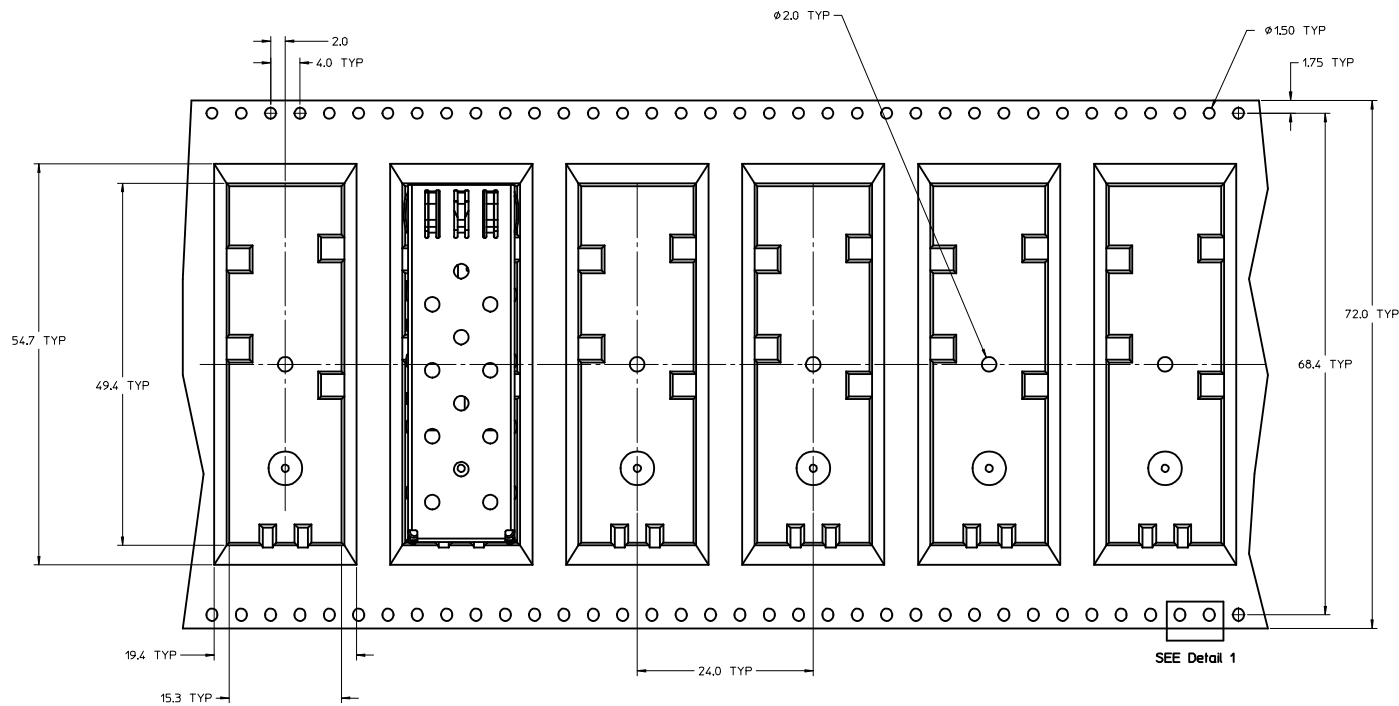


REVISED EC NO: CPG2013-0591 DORNFELIAN 2012/09/11 CHYOMCKERVEY 2012/09/12 APPR:KLLOYD 2012/10/12	QUALITY SYMBOLS ▽=0 ▽=0 ▽=0	GENERAL TOLERANCES (UNLESS SPECIFIED)		DIMENSION STYLE MM ONLY		SCALE 5:1	DESIGN UNITS METRIC	THIRD ANGLE PROJECTION	
		4 PLACES ± --- ± ---	mm	INCH	DRAWN BY MMCKERVEY	DATE 2011/07/25	TITLE 1X1 SFP TAPE AND REEL		
		3 PLACES ± --- ± ---	± 0.13	± ---	CHECKED BY	DATE	MATERIAL NO. 747370111		
		2 PLACES ± 0.25 ± ---	± ---	± ---	APPROVED BY KLLOYD	DATE 2012/01/05	DOCUMENT NO. SD-74737-0111	SHEET NO. 3 OF 5	
1 PLACE ± 0.25 ± ---		ANGULAR ± 1 °		THIS DRAWING CONTAINS INFORMATION THAT IS PROPRIETARY TO MOLEX INCORPORATED AND SHOULD NOT BE USED WITHOUT WRITTEN PERMISSION					
0 PLACE ± ±		DRAFT WHERE APPLICABLE MUST REMAIN WITHIN DIMENSIONS							

molex

19 18 17 16 15 14 13 12 11 10 9 8 7 6 5 4 3 2 1

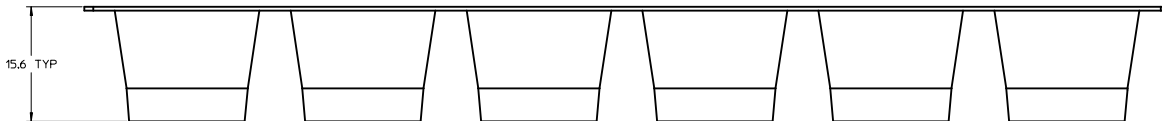
20 19 18 17 16 15 14 13 12 11 10 9 8 7 6 5 4 3 2 1



Detail 1
Scale 15:1

SEE Detail 1

TAPE FEED DIRECTION →



REVISED EEC NO: CPG2013-0591 2012/09/11 DORWENJIAN CHYOMCKERVEY 2012/09/12 APPROVED APPR:KLLOYD 2012/10/12 REV DESCRIPTION	QUALITY SYMBOLS	GENERAL TOLERANCES (UNLESS SPECIFIED)	DIMENSION STYLE	SCALE	DESIGN UNITS	THIRD ANGLE PROJECTION	
	$\nabla=0$ $\nabla=0$ $\nabla=0$	4 PLACES ± --- + --- 3 PLACES ± --- + --- 2 PLACES ± 0.13 + --- 1 PLACE ± 0.25 + --- 0 PLACE ± +	mm INCH ± --- ± --- ± 0.13 ± --- ± 0.25 ± --- ± ±	MM ONLY DRAWN BY DATE MMCKERVEY 2011/07/25 CHECKED BY DATE	3:1 TITLE 1X1 SFP TAPE AND REEL	METRIC	THIRD ANGLE PROJECTION
	ANGULAR ± 1 ° DRAFT WHERE APPLICABLE MUST REMAIN WITHIN DIMENSIONS	MATERIAL NO. 747370111 SIZE D	APPROVED BY DATE KLLOYD 2012/01/05 DOCUMENT NO. SD-74737-0111	SHEET NO. 4 OF 5			
	THIS DRAWING CONTAINS INFORMATION THAT IS PROPRIETARY TO MOLEX INCORPORATED AND SHOULD NOT BE USED WITHOUT WRITTEN PERMISSION						

molex

DATE	REV	DESCRIPTION
2011-07-25	1	PRE-RELEASE
2011-12-05	A	INITIAL RELEASE; PART IDENTIFICATION CHANGED [SHT1]; TAPE CHANGED TO TWO LAYER BOTTOM [SHT4]; CHANGED HOLE SPACING TO 68.4MM [SHT4]; ADDED DETAIL VIEW 1 [SHT4];
2012-01-05	A1	REMOVED 8.58 AND REPLACED WITH 0.57 [SHT1]; ADDED 0.30±0.10 [SHT3]; CORRECTED ARROW APPEARANCE [SHT4]
2012-08-08	C	DIM 1.80 UPDATED TO 1.80 TYP [SHT 1]. SECTION LINE MOVED [SHT 3], UPDATED ALL VIEWS [SHT4], UPDATED 15.1 TYP TO 15.3 TYP [SHT4], UPDATED 49.1 TYP TO 49.4 TYP [SHT4], UPDATED 14 TYP TO 15.6 TYP [SHT 4]
2012-09-12	D	UPDATED TRAY REEL CONE HEIGHT [SHT 4]

REVISED IEC NO: CPG2013-0591 DRAWN BY: CHYKMMCKERVEY APPR: K LLOYD	2012/09/11 2012/09/12 2012/10/12	QUALITY SYMBOLS ∇=0 ∇=0 ∇=0	GENERAL TOLERANCES (UNLESS SPECIFIED)		DIMENSION STYLE MM ONLY	SCALE 5:1	DESIGN UNITS METRIC	THIRD ANGLE PROJECTION		
			4 PLACES ± mm ± INCH 3 PLACES ± --- ± --- 2 PLACES ± 0.13 ± --- 1 PLACE ± 0.25 ± --- 0 PLACE ± ±	DRAWN BY: MMCKERVEY DATE: 2011/07/25 CHECKED BY:	TITLE 1X1 SFP TAPE AND REEL					
			ANGULAR ± 1 ° DRAFT WHERE APPLICABLE MUST REMAIN WITHIN DIMENSIONS	APPROVED BY: K LLOYD DATE: 2012/01/05	MATERIAL NO. 747370111		DOCUMENT NO. SD-74737-0111		SHEET NO. 5 OF 5	
				THIS DRAWING CONTAINS INFORMATION THAT IS PROPRIETARY TO MOLEX INCORPORATED AND SHOULD NOT BE USED WITHOUT WRITTEN PERMISSION						

