

# Customer Information Sheet

DRAWING No.: M80-823XXXX

SHEET 2 OF 2

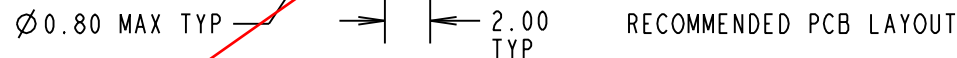
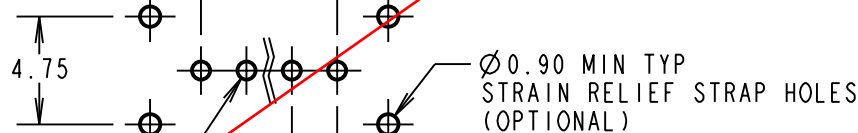
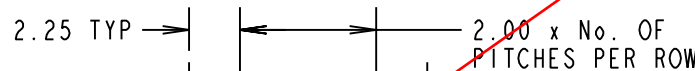
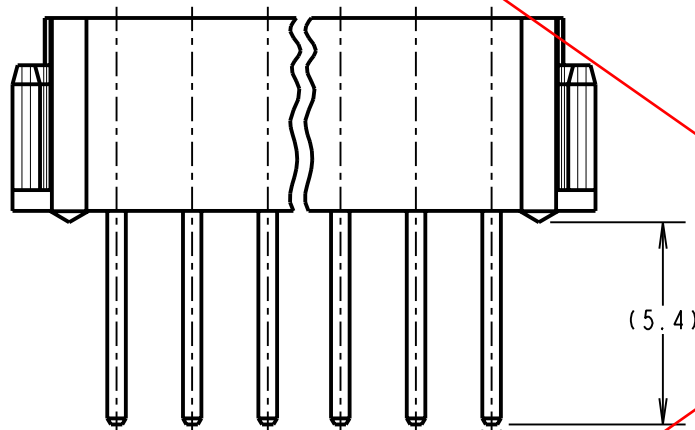
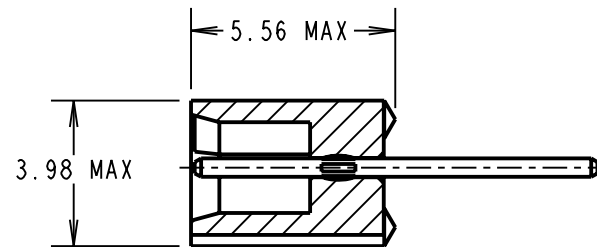
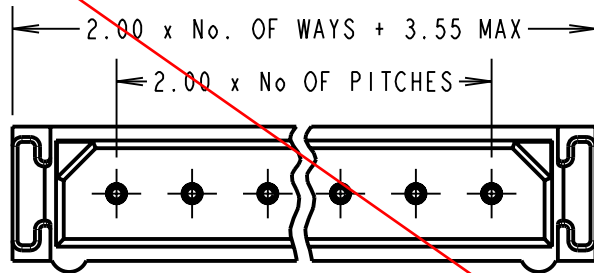
IF IN DOUBT - ASK

©

NOT TO SCALE

THIRD ANGLE PROJECTION

ALL DIMENSIONS IN mm



**OBSOLETE**

NOTES:  
1. 2-OFF STRAIN RELIEF STRAPS  
MAY BE USED WITH EACH  
CONNECTOR.

**SPECIFICATIONS:**

**MATERIAL:**  
MOULDING = POLYAMIDE 46 UL94V-0, BLACK  
CONTACTS = PHOSPHOR BRONZE

**FINISH:**

**CONTACTS:**

- 22 = 0.75µ GOLD ON CONTACT AREA.  
3.0µ 90/10 TIN/LEAD ON TAILS
- 42 = 0.75µ GOLD ON CONTACT AREA.  
3.0µ 100% TIN ON TAILS
- 45 = 0.75µ GOLD

**ELECTRICAL:**

- CURRENT RATING (25°C) = 3.0A MAX.
- CURRENT RATING (85°C) = 2.2A MAX.
- WORKING VOLTAGE = 120V AC/DC
- VOLTAGE PROOF = 360V AC/DC

**CONTACT RESISTANCE:**

- INITIAL = 20 mΩ MAX.
- AFTER CONDITIONING = 25 mΩ MAX.
- INSULATION RESISTANCE:  
INITIAL = 1000 MΩ MIN.
- AFTER CONDITIONING = 100 MΩ MIN.

**MECHANICAL:**

DURABILITY = 500 OPERATIONS

**ENVIRONMENTAL:**

TEMPERATURE RANGE = -55°C TO +125°C

**PACKING:**

TUBE  
FOR COMPLETE SPECIFICATION, SEE  
COMPONENT SPEC. C005XXX (LATEST ISSUE)

**ORDER CODE:**

**M80-823XXXX**

**TOTAL No. OF WAYS**

- 02, 03, 04, 05, 06,
- 07, 17 & 22

**FINISH:**

- 22 = SELECTIVE GOLD + TIN/LEAD
- 42 = SELECTIVE GOLD + 100% TIN
- 45 = GOLD

CP	5	30.09.09	10303
NAME	ISS.	DATE	C/NOTE
APPROVED: C.PENROSE			
CHECKED: R.ADDE			
DRAWN: I SANDY			
CUSTOMER REF.:			
ASSEMBLY DRG:			

**HARWIN**

HARWIN USA  
TEL: 603 893 5376  
FAX: 603 893 5396  
mis@harwin.com

HARWIN Europe (UK)  
TEL: 023 9231 4545  
FAX: 023 9231 4590  
mis@harwin.co.uk

HARWIN Asia  
TEL: +65 6 779 4909  
FAX: +65 6 779 3868  
mis@harwin.com.sg

THIS DRAWING AND ANY  
INFORMATION OR DESCRIPTIVE  
MATTER SET OUT HEREON ARE  
CONFIDENTIAL AND COPYRIGHT  
PROPERTY OF THE HARWIN  
GROUP AND MUST NOT BE  
DISCLOSED, LOANED, COPIED  
OR USED FOR MANUFACTURING,  
TENDERING OR FOR ANY  
OTHER PURPOSE WITHOUT  
THEIR WRITTEN PERMISSION.

**TOLERANCES**  
X. = ±1mm  
X.X = ±0.25mm  
X.XX = ±0.10mm  
X.XXX = ±0.01mm  
  
ANGLES = ±5°  
UNLESS STATED

**MATERIAL:**  
SEE ABOVE  
  
**FINISH:** SEE ABOVE  
  
**S/AREA:** mm<sup>2</sup>

**TITLE:** DATAMATE SIL  
VERTICAL PC TAIL PLUG  
ASSEMBLY - UNLATCHED  
  
**DRAWING NUMBER:**  
**M80-823XXXX**

SHT  
2 OF 2