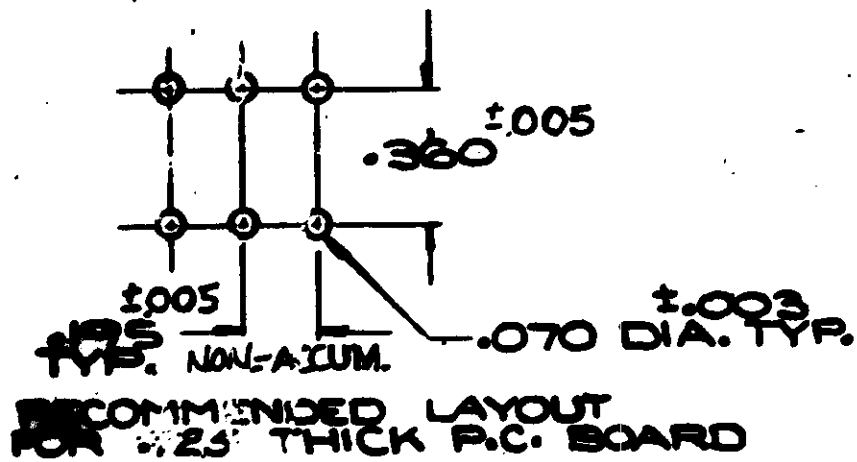
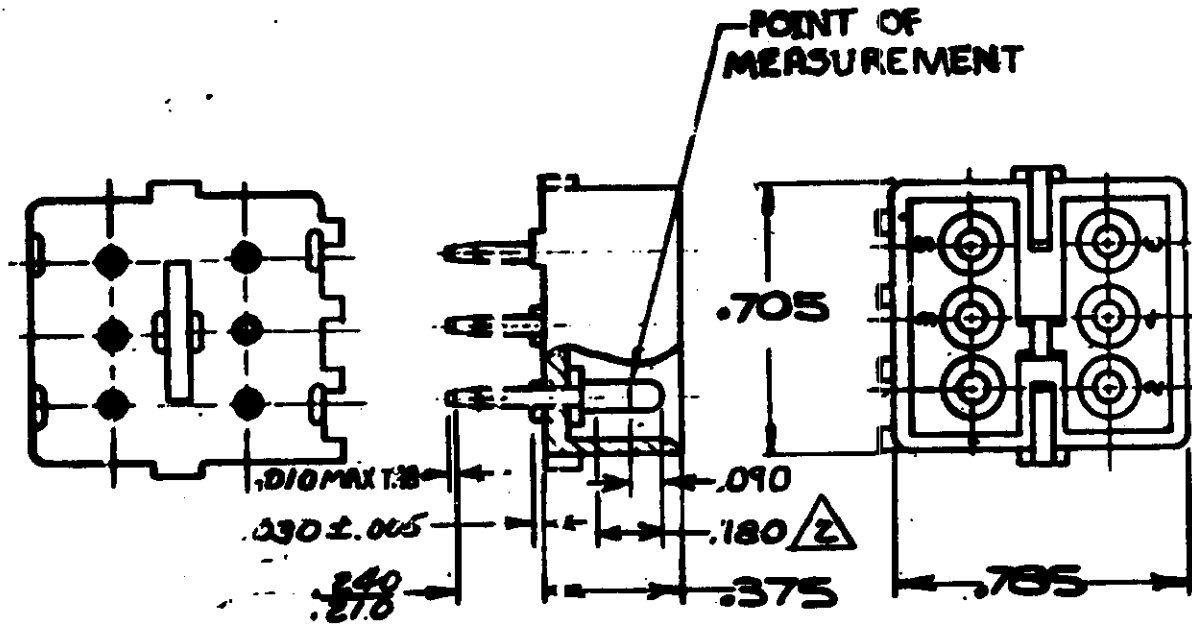


S



- 1. PARTS COMPLY WITH AMP SOLDERABILITY SPEC. NO. 109-11-3
- 2. CONTACT IS PLATED OVERALL WITH .000050 NICKEL, THEN .000030 GOLD OVER CONTACT LENGTH INDICATED AND MATTE TIN ON SOLDER TAIL END.
- 3. OBSOLETE PARTS: OBSOLETE CIS STREAMLINING-PER D.RENAUD/D.SINISI

3 OBSOLETE

ASSEMBLY NO.	HSG.MATL.	COLOR	PIN MATL.	FINISH
350425-2	NYLON	NATURAL	COPPER ALLOY	GOLD
350425-1	NYLON	NATURAL	COPPER ALLOY	FRETIN

K	OBsolete 1-1, 2, 2, 2, 2, 2, 2, 2	KW	4-17
	3-1, 3-2, 4-1, 4-2, 5-2, 5-1		
	6-1, 6-2, 7-1, 7-2, 8-1, 8-2		
	9-1, 9-2 CM 473		

REV	PER	ECO	NO	DATE	BY	CHKD	DATE
K1	REV PER	ECO-10-000445		09JAN			
	RESTORED				RS		9/1/85
	REV. PER	M-7375			SS		8/27/85
	REV. PER	M-6896			PAS		7/1/83
	ADD'S	NOTE 2, M-6694			WAF		4/24/81
	REV. TAIL	LENGTH M-4161			WAF		5/24/79
	REVISED	M-4161			MF		3-7-77
	ECN	M-3871			PHN		7/10/76
	ECN	3452			GY		7/10/76
	ECN	M-3156			PL		4/1/76
	REDRAW	ADDED	COLORS		WAF		4/1/85
LTR	REVISION	RECORD			DR		DATE

NUMBER	DESCRIPTION
350425	

<p>© 1978 BY AMP INCORPORATED. ALL RIGHTS RESERVED. AMP PRODUCTS COVERED BY PATENTS. OTHER PATENTS PENDING.</p> <p>9. Schuman 6-27-73</p> <p>6-28-73</p> <p>Thurber 1-3</p> <p>6/28/73</p>	<p>MATERIAL AND FINISH</p> <p>SEE TABLE</p> <p>WIRE - GAGE - INSULATION</p> <p>TOLERANCE EXC. PT AS NOTED</p> <p>6 .10 .01</p>	<p>CUSTOMER COPY REFERENCE ONLY</p> <p><b>AMP</b> AMP INCORPORATED MORRISTOWN, N.J.</p> <p>TYPE</p> <p>LOC <b>CM B</b></p> <p>REV <b>K1</b></p> <p>350425</p> <p>6 CIRCUIT MATE-N-LOK P.C. BOARD PIN HEADER</p>
--	--	---