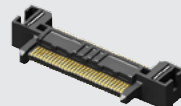


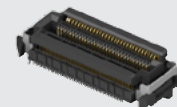
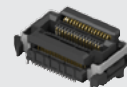
FT5-15-03.0-L-DV-TH

FT5-15-01.0-L-DV-TH



FT5-30-01-L-RA

FS5-15-04.0-L-DV-TH



FS5-30-04.0-L-DV-TH

(0.50 mm) .0197"

FT5, FS5 SERIES

# HIGH-SPEED FLOATING CONTACT SYSTEM

FT5 Mates with:

FS5

FS5 Mates with:

FT5

## SPECIFICATIONS

For complete specifications and recommended PCB layouts see [www.samtec.com?FT5](http://www.samtec.com?FT5) or [www.samtec.com?FS5](http://www.samtec.com?FS5)

**Insulator Material:**

Black Liquid Crystal Polymer

**Contact Material:**

Phosphor Bronze (FT5)

BeCu (FS5)

**Weld Tab:**

Phosphor Bronze

**Plating:**

Au or Sn over

50 μm (1.27 μm) Ni

**Current Rating:**

1.8 A per pin

(1 pin powered per row)

**Operating Temp Range:**

-55 °C to +125 °C

**RoHS Compliant:**

Yes

**Lead-Free Solderable:**

Yes

## RECOGNITIONS

For complete scope of recognitions see [www.samtec.com/quality](http://www.samtec.com/quality)



FILE NO. E111594

## MATED HEIGHT

MATED HEIGHT*		
FS5 LEAD STYLE	FT5 LEAD STYLE	
-04.0	-01.0	-03.0
(5.00) .197	(7.00) .276	

\*Processing conditions will affect mated height.

**Note:** Floating contact system provides 0.50 mm float in X and Y directions.

**Note:** Some lengths, styles and options are non-standard, non-returnable.

FT5	NO. OF POSITIONS	LEAD STYLE	PLATING OPTION	ROW OPTION	TH	OPTION
	-15, -30 (Per Row)	-01.0 = 1 mm Body Height  -03.0 = 3 mm Body Height  -01 = Right-angle	-L = 10 μm (0.25 μm) Gold on contact, Matte Tin on tail	-DV = Vertical  -RA = Right-angle	Leave blank for -RA  -TH = Through-hole weld tab	Required callouts  -P = Pick & Place Pad (-DV only)  -K = (5.00 mm) .197" DIA Polyimide Film Pick & Place Pad (-RA only)  -TR = Tape & Reel

LEAD STYLE	A
-01.0	(3.72) .146
-03.0	(5.72) .225

FS5	NO. OF POSITIONS	LEAD STYLE	PLATING OPTION	DV	TH	K	TR
	-15, -30 (Per Row)	-04.0 = 4 mm Body Height	-L = 10 μm (0.25 μm) Gold on contact, Matte Tin on tail		-TH = Through-hole weld tab	-K = (8.25 mm) .325" DIA Polyimide Film Pick & Place Pad	-TR = Tape & Reel

## ALSO AVAILABLE (MOQ Required)

- Other lead counts
  - Surface mount weld tab
- Contact Samtec.