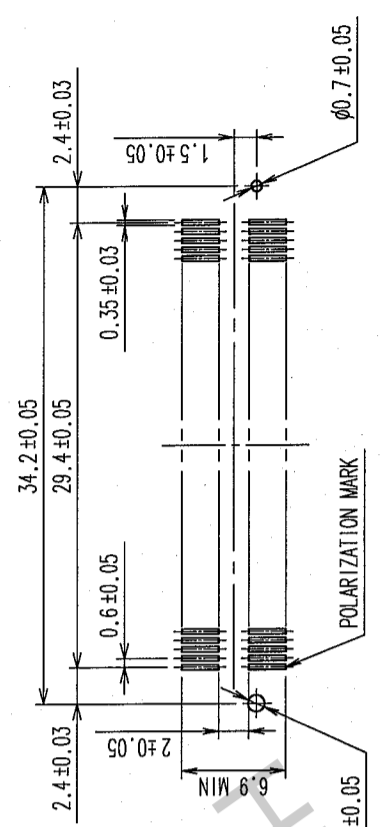
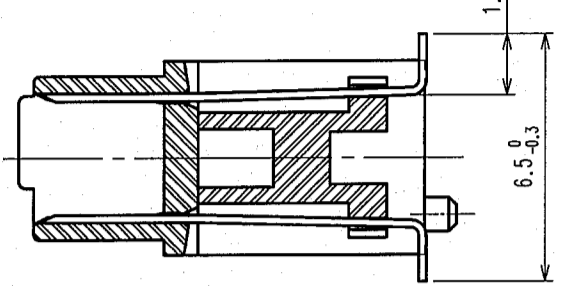


COUNT	DESCRIPTION OF REVISIONS	BY	CHKD	DATE	COUNT	DESCRIPTION OF REVISIONS	BY	CHKD	DATE
△									
△									
△									

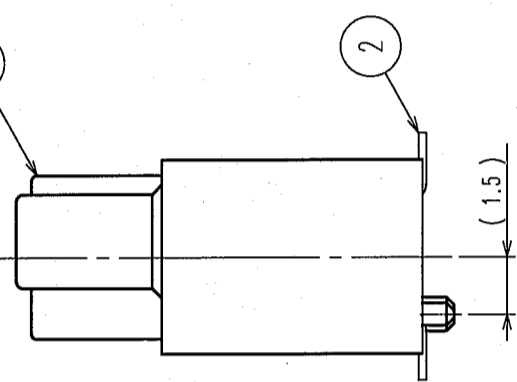
RECOMMENDED LAND PATTERN DIMENSION OF PCB (MOUNTING SIDE) (2:1)



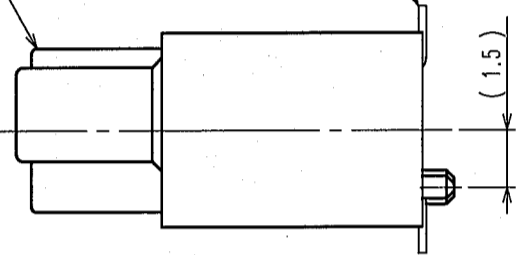
A-A



1



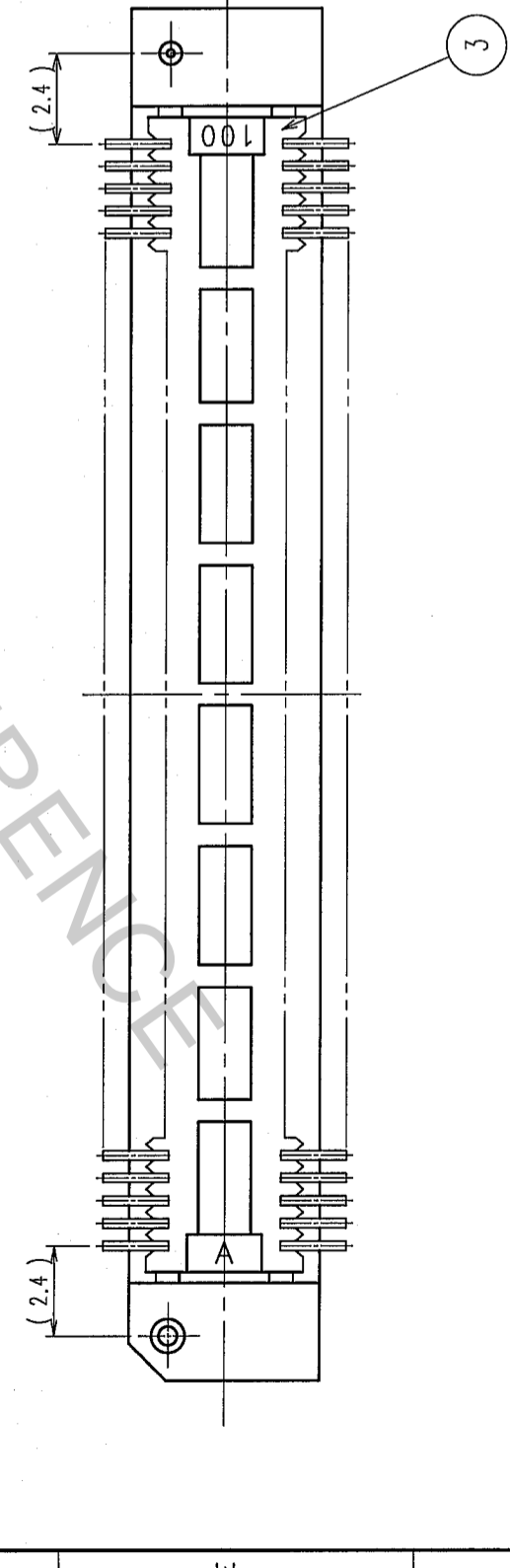
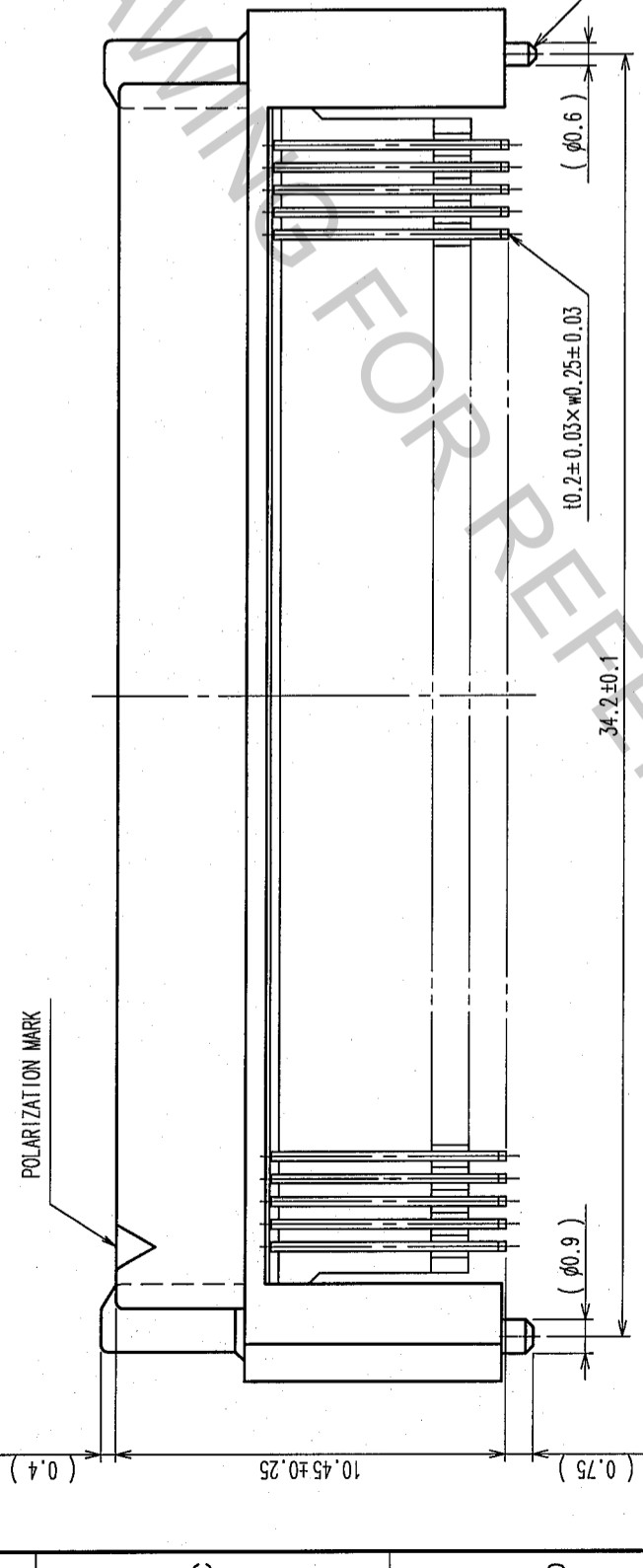
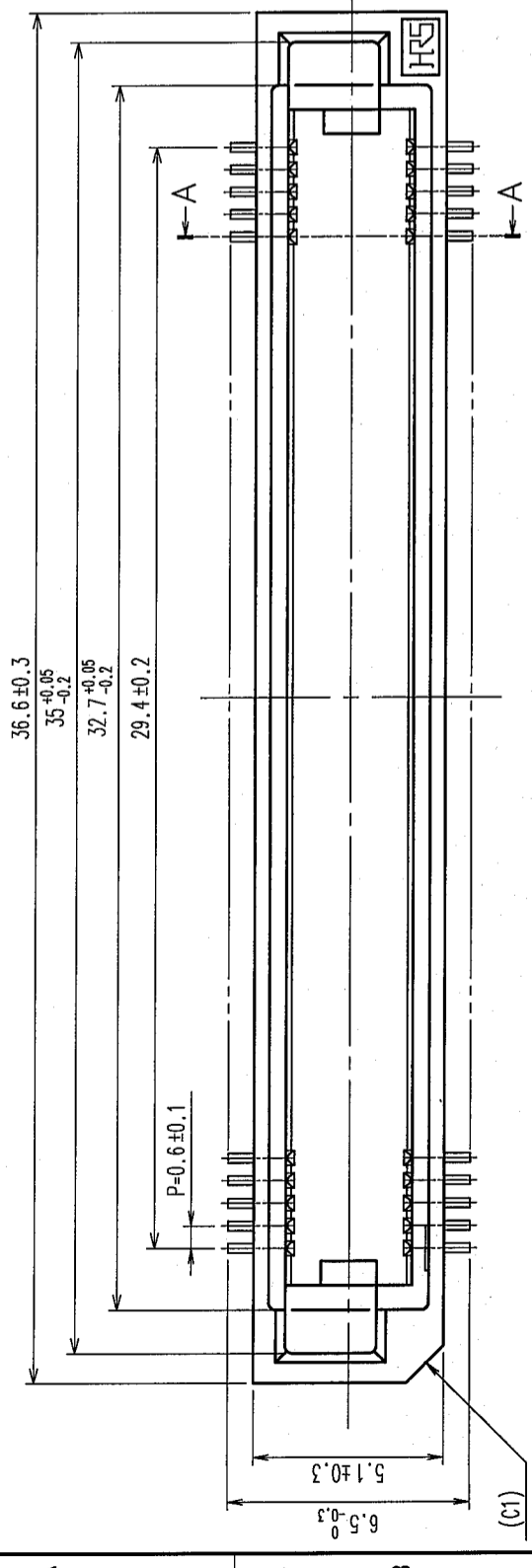
2



- NOTE 1. LEAD CO-PLANARITY SHALL BE 0.1mm MAX.  
 2. TUBE PACKAGING SHALL BE APPLIED FOR THIS PRODUCT.  
 SEE NEXT PAGE FOR DETAILS.  
 3. FOR MODIFICATION, ETC., PREVENTIVE HOLE FOR SINK MARK MAY BE ADDED ACCORDING TO CIRCUMSTANCES.  
 4. THE DIMENSIONS IN PARENTHESES ARE FOR REFERENCE.

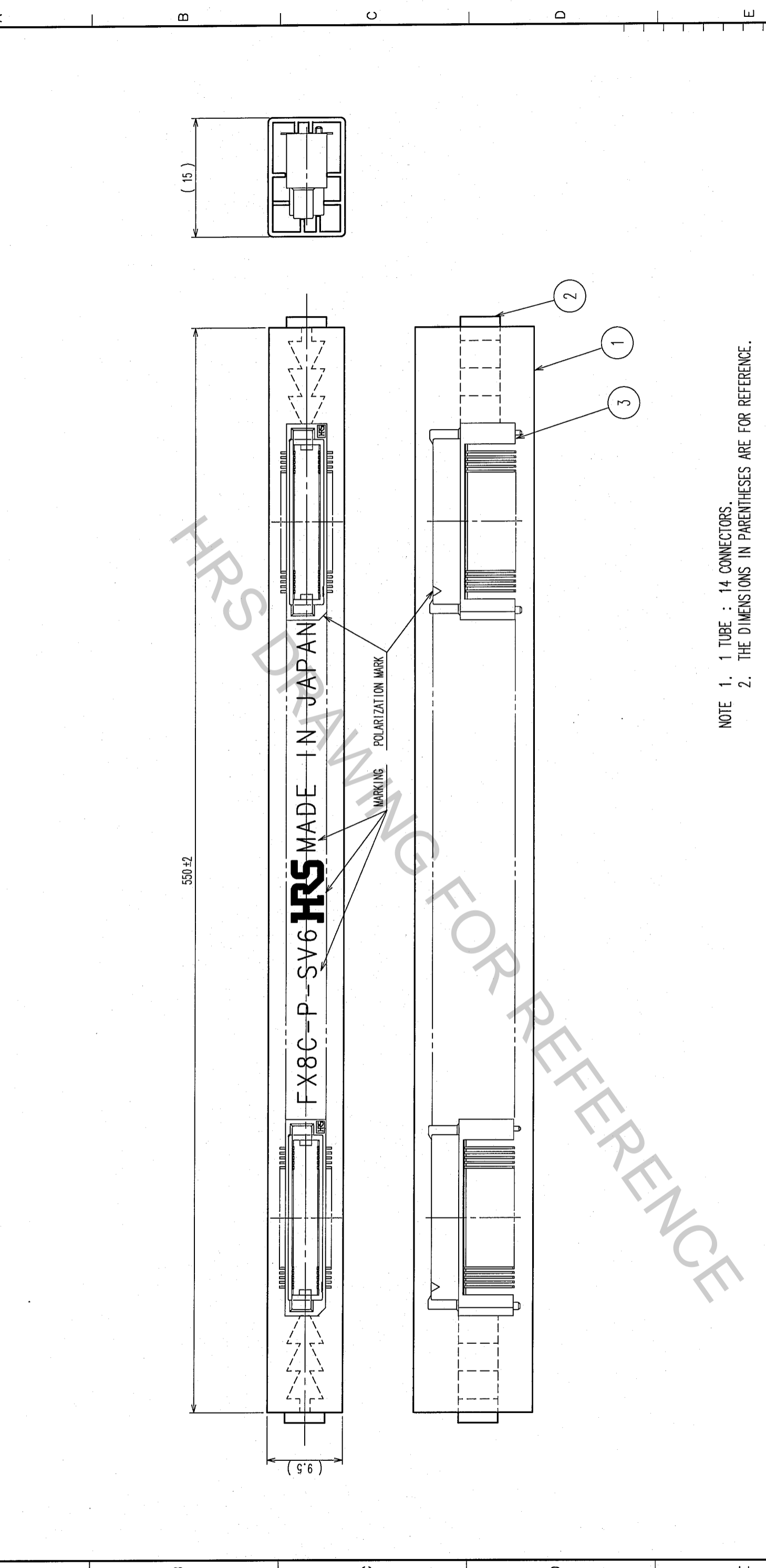
NO.	MATERIAL	FINISH, REMARKS	NO.	MATERIAL	FINISH, REMARKS
1, 3	POLYPHENYLENE SULFIDE	LIGHT BROWN (UL94V-0)	2	PHOSPHOR BRONZE	
CONTACT AREA: GOLD 0.1μm min.		LEAD AREA: TIN 1μm min.		UNDER PLATING: NICKEL 1μm min.	
FINISH, REMARKS		DESIGNED		APPROVED	
FINISH, REMARKS		CHECKED		RELEASED	
FINISH, REMARKS		DESIGNED		APPROVED	
FINISH, REMARKS		CHECKED		RELEASED	
FINISH, REMARKS		DESIGNED		APPROVED	
FINISH, REMARKS		CHECKED		RELEASED	

DRAWING NO.	PART NO.
EDC3-150873-21	FX8C-100P-SV6(91)
SCALE 5:1	CODE NO. CL578-0605-4-91
UNITS ITTMM	



TO	
PCK	

1	2	3	4	5	6	7	8		
COUNT	DESCRIPTION OF REVISIONS	BY	CHKD	DATE	COUNT	DESCRIPTION OF REVISIONS	BY	CHKD	DATE
△					△				
△					△				
△					△				



NOTE 1. 1 TUBE : 14 CONNECTORS.  
 2. THE DIMENSIONS IN PARENTHESES ARE FOR REFERENCE.

2		POLYVINYL CHLORIDE STOPPER		3		(CONNECTOR)	
NO.	MATERIAL	FINISH, REMARKS	NO.	MATERIAL	FINISH, REMARKS	NO.	MATERIAL
1	POLYVINYL CHLORIDE	TUBE	1	POLYVINYL CHLORIDE	TUBE		
CODE NO. (OLD)	CL		DRAWN	DESIGNED	CHECKED	APPROVED	RELEASED
			H. Doi	H. Doi	K. Ogawa	H. Okawa	
			05.09.02	05.09.02	05.09.02	05.09.02	
DRAWING NO.		PART NO.		FINISH, REMARKS		RELEASED	
EDC3-150873-21		FX8C-100P-SV6(91)					
SCALE	FREE	UNITS		CODE NO.		2	
		mm		CL578-0605-4-91			
HRS HIROSE ELECTRIC CO., LTD							

TO	PCK		
----	-----	--	--