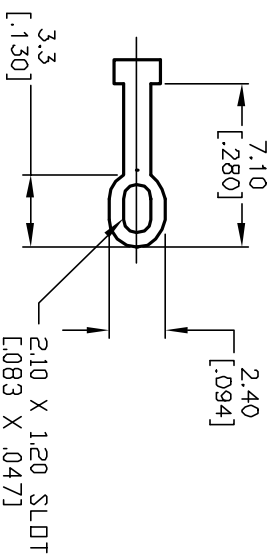
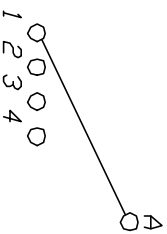


P.C.B. MOUNTING HOLES

CONTACT CONFIGURATION



NOTES:

1. ALL DIMENSION IN MM [INCH]
2. GENERAL TOLERANCE: X.X=±0.4  
X.XX=±0.25
3. TERM. NOS. FOR REF. ONLY
4. CONTACT RATING SWITCHING: 150mA, 250V AC/DC  
350mA, 110V AC/DC
5. CONTACT RATING 5A
6. OPERATING FORCE: 425±100 CM/STANDARD
7. OPERATING TEMP: -30° to 85°C
8. CIRCUIT SP: 4 POSITIONS, 30° INDEX.
9. DIELECTRIC STRENGTH 1000V RMS min.@ SEA LEVEL
10. TIMING: SHORTING
11. ▲ DESIGNATE CRITICAL PARAMETER.
12. LOCK NUT AND WASHER NOT SHOWN.

REV.	ECN No.	DESCRIPTION	DATE	CHKD
A	13020	RELEASED FOR PRODUCTION	4/9/03	AR

TITLE	SCALE	DATE	DR	DWG	REV
KC14A30.001SLF	1:5:1	4/9/03	AR	G510890	A

**E-SWITCH®**

THE INFORMATION CONTAINED IN THIS DOCUMENT IS PROPRIETARY TO E-SWITCH AND IS NOT TO BE COPIED OR TRANSMITTED