



40W Constant Voltage LED Driver PDA041B Waterproof LED Driver Non-Dimming



Features

- Class 2 per UL1310
- OVP, OCP, Over-Load and Short-Circuit Protection
- >0.9 Power Factor Correction
- 5 Year Warranty
- IP67 Rating - waterproof
- THD <20%
- UL 8750 Compliant
- Brownout/Brownout Recovery

Applications

- Down lights
- Area Lights
- Architectural lighting

Safety Approvals

- cUL/UL

Mechanical Characteristics

- Length: 95mm (3.74in)
- Width: 71mm (2.79in)
- Height: 32mm (1.26in)
- Weight: 340g (11.99oz)

Output Specifications

Model	Output Current Range			DC Output Voltage	Output Power
	Min.	Typ.	Max.		
PDA041B-24VB	0A	-	1.67A	24V	40W
PDA041B-48VB	0A	-	0.83A	48V	40W

Phihong is not responsible for any error, and reserves the right to make changes without notice. Please visit our website at www.phihong.com for the most up-to-date specifications and contact information.

INPUT:

AC Input Voltage Rating
120VAC to 277VAC

AC Input Frequency
47~63Hz

Maximum Input Current
≤ 0.8A

Leakage Current
0.5mA maximum

Power Factor
≥ 0.9

THD
Less than 20%

OUTPUT:
Output Voltage Ripple
≤8% (p-p)

Efficiency
87% at 277VAC

Environmental:

Temperature	
Operation case*	-40 to +80°C
Non-operation	-40 to +82°C
Operating Humidity	20 to 95%

*Output derates from 50°C to 70°C Ta

EMC

FCC 47 Part 18 Class B

Immunity

- IEC61000-4-2
- IEC61000-4-4
- IEC61000-4-5
- IEC61000-4-11

Dielectric Withstand (Hi-pot) Test

Primary to secondary: 3000VAC for 1 minute, 10mA

Insulation Resistance

Primary to secondary: >10M Ohm 500VDC, 1 Minute

Features

Short-Circuit Protection

The PSU will withstand a short circuit across the outputs without damage

Input Over Current Protection

The input power line will be fused with a 2A/300V fuse

Output Over-voltage Protection

Auto shutdown

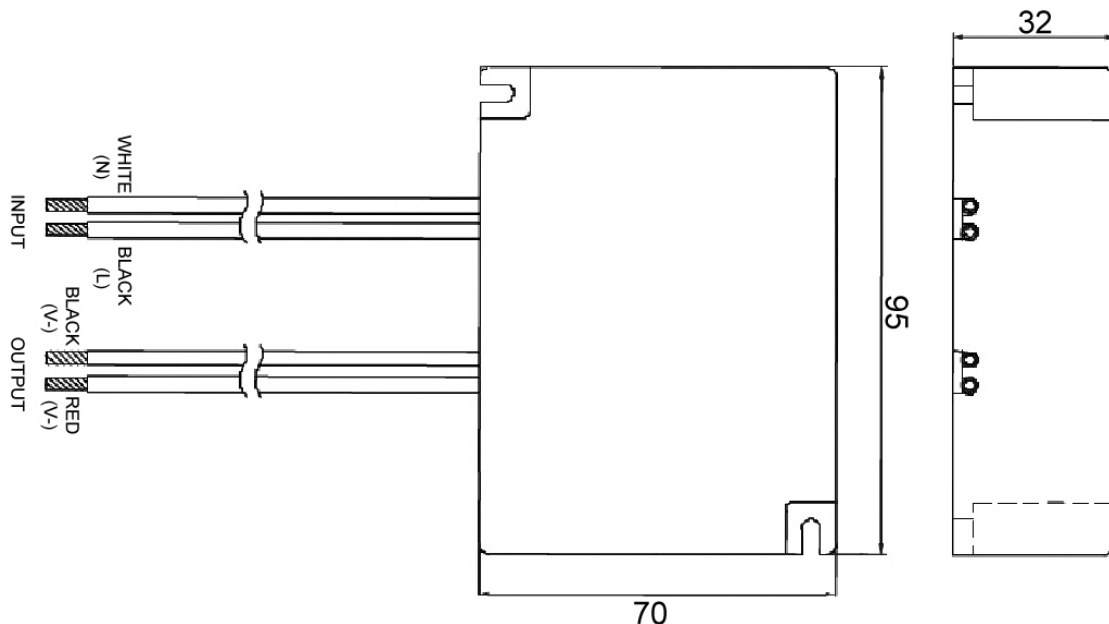
Input / Output Connections

Position	Terminal Color	Specification
Input	Black	AWG16 Solid Wire
	White	AWG16 Solid Wire
Output	Red	AWG18 Solid Wire
	Black	AWG18 Solid Wire

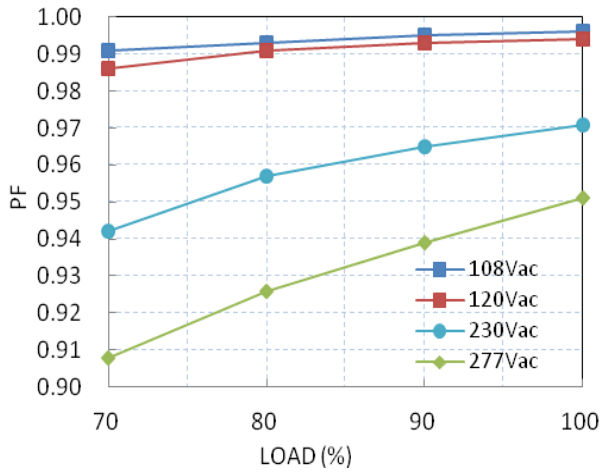
Warranty

5 Years

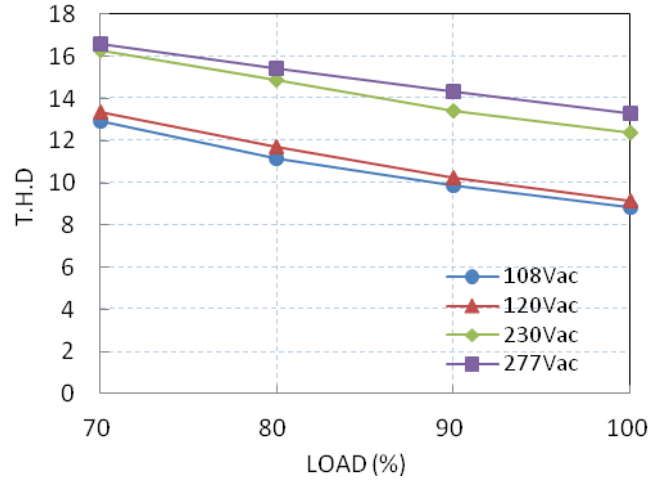
Dimension Diagram unit: mm



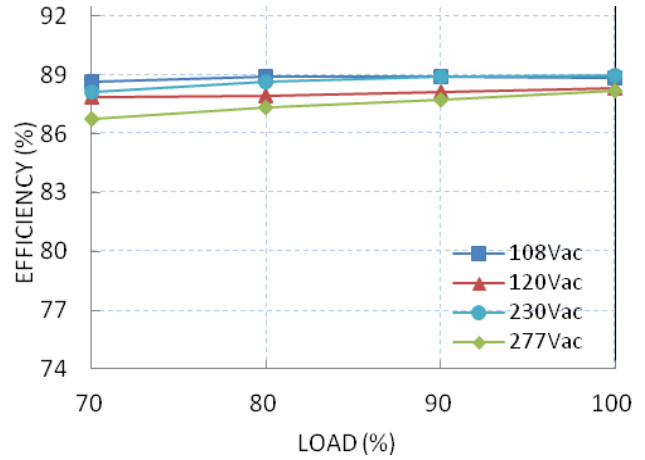
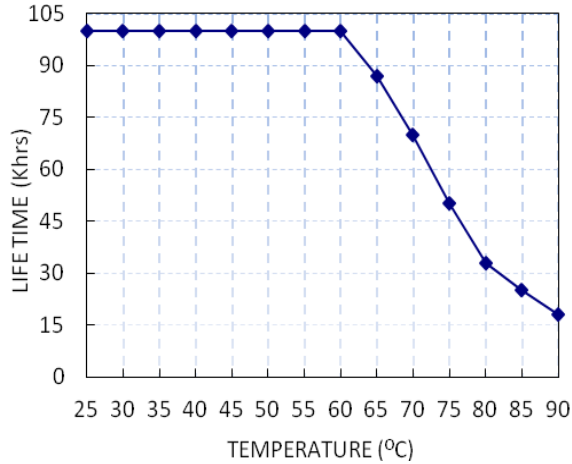
Power Factor vs. Load



Total Harmonic Distortion vs. Load

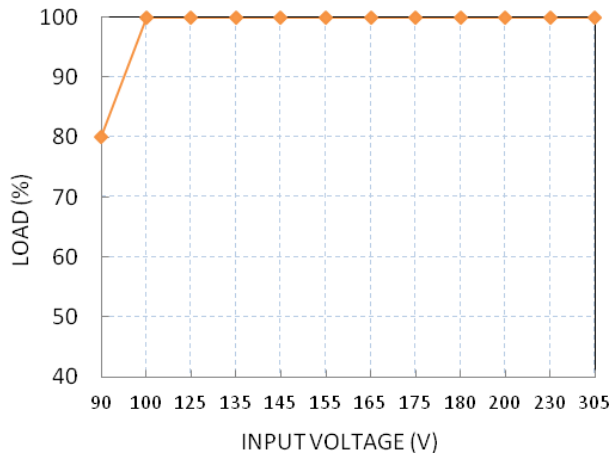


Lifetime vs. Tc



Temperature Rating

Static Characteristic: Load vs. Input Voltage



Derating Curve: Load vs Ta

