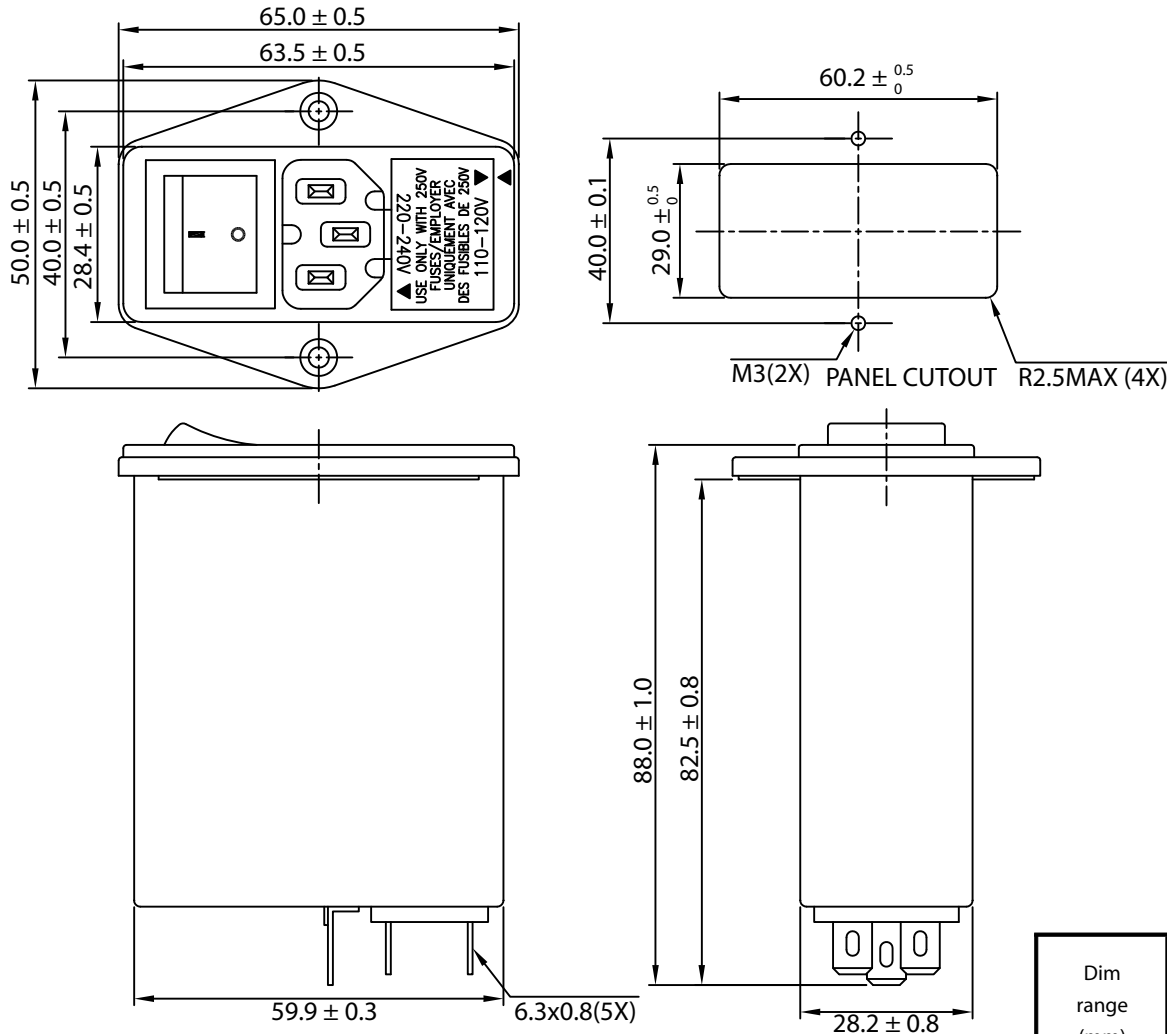


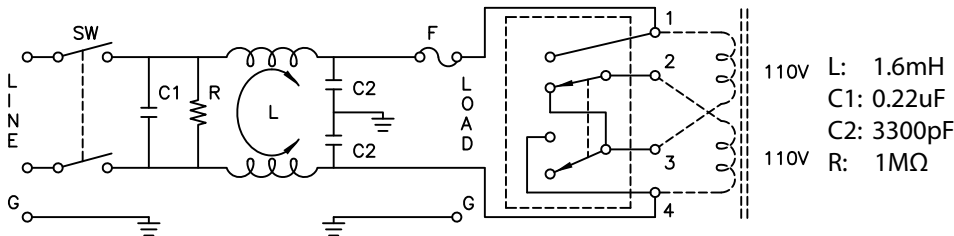
THESE DRAWINGS ARE THE PROPERTY OF QUALTEK ELECTRONICS AND NOT TO BE REPRODUCED FOR OR COMMUNICATED TO A THIRD PARTY WITHOUT THE EXPRESS WRITTEN PERMISSION OF AN OFFICER OF QUALTEK ELECTRONICS.

REVISION			
REV.	DESCRIPTION	DATE	APPROVED
B	RoHS Compliancy	06-01-06	DP
C	Updated Dim & Fuse Changed to 5x20mm Size Only	09-13-16	LY

1. PHYSICAL DIMENSIONS



2. ELECTRICAL SCHEMATIC



ELECTRICAL CHARACTERISTICS:

- 1-1. VOLTAGE RATING.....115/250VAC
- 1-2. CURRENT RATING
A. @ 115/250 VAC.....10 A RMS MAX
B. @ 250 VAC (VDE).....6(4) A RMS MAX
- 1-3. OPERATING FREQUENCY.....50/60Hz
- 1-4. LEAKAGE CURRENT: EACH LINE TO GROUND
A. @ 115 VAC 60Hz.....0.25 mA MAX
B. @ 250 VAC 50Hz.....0.45 mA MAX
- 1-5. HIPOT RATING (FOR ONE MINUTE)
A. LINE TO GROUND.....2250 VDC
B. LINE TO LINE.....1450 VDC
- 1-6. MINIMUM INSERTION LOSS IN dB: (AT 50 OHM SYSTEM)

FREQ. MHz	.01	.05	.10	.15	.50	1.0	5.0	10	30
COM. MODE dB	/	10	15	20	20	30	40	40	30
DIF. MODE dB	/	2	5	8	15	30	40	45	35

- 1-7. OPERATING TEMPERATURE.....-25° TO +100° C
(DERATING ABOVE 40° C)
- 1-8. SAFETY:
- 1-9. FUSE SIZE 5x20mm (FUSES NOT INCLUDED)
- 1-10. RoHS COMPLIANT

CONTROLLED

Dim range (mm)	Tolerance +/- (mm)	Qualtek Electronics Corp. PPC DIVISION		
		Part Number: 864-10/011		
0-1	0.15	Description: EMI FILTER		
1-6	0.20		UNIT: mm	REV. C
6-18	0.30			
18-50	0.50			
50-120	0.70	Drawn / Date	Checked / Date	Approved / Date
120-250	0.90	B.ZHANG 01-14-03	01-14-03	JJH / 01-14-03
250-500	1.20			