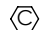


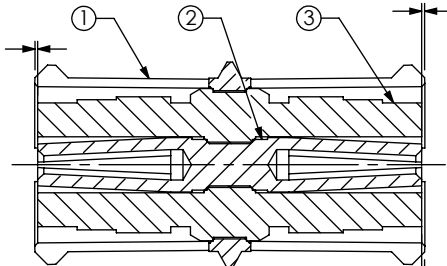
DO NOT SCALE FROM THIS PRINT

DESIGNED & DIMENSIONED IN MILLIMETERS [INCHES]

SMP-J-B-XX-ST-XXXX

GENDER -J: JACK  
 TYPE -B: BULLET  
 LENGTH -0645: 6.45MM  
 \*-0700: 7.00MM  
 \*-1000: 10.00MM  
 -1450: 14.50MM  
 ORIENTATION -ST: STRAIGHT

**B**   
 $0.05^{+0.12}_{-0.05} [ .002^{+.005}_{-.002} ]$   
 (FROM SHELL TO INSULATOR, SEE NOTE 4)



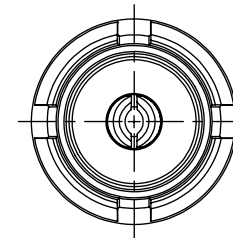
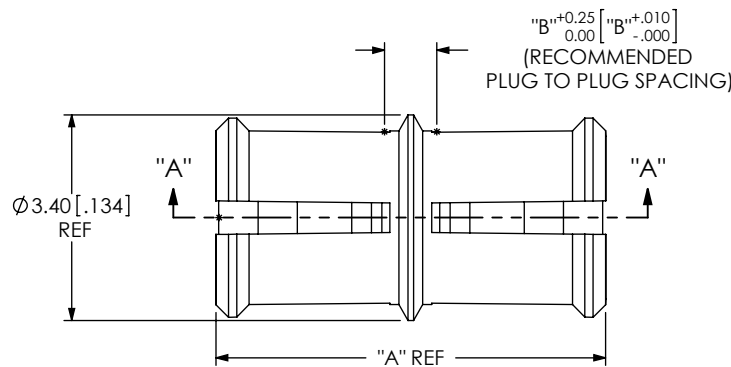
$0.05^{+0.12}_{-0.05} [ .002^{+.005}_{-.002} ]$   
 (FROM SHELL TO CONTACT) **B**

$0.05^{+0.12}_{-0.05} [ .002^{+.005}_{-.002} ]$   
 (FROM SHELL TO INSULATOR) **B**

SECTION "A"- "A"

PLATING SPECIFICATION (VALUES GIVEN ARE IN MICRO-INCHES)  
 -HG: HEAVY GOLD / GOLD  
 30 Au / 50 Ni MIN ON PIN  
 10 Au / 50 Ni MIN ON OUTER CONTACT  
 -GF: GOLD / FLASH GOLD  
 10 Au / 50 Ni MIN ON PIN  
 3 Au / 50 Ni MIN ON OUTER CONTACT  
 (SEE TABLE 1)

\* = NOT TOOLED

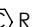


LENGTH	"A"	"B"	SMP-P-B-ST-XXX-INS	QTY
-0645	6.45 [254]	0.86 [034]	SMP-J-B-ST-0645-INS	1
*-0700	7.00 [276]	1.41 [056]	SMP-J-B-ST-0700-INS	1
*-1000	10.00 [394]	4.41 [174]	SMP-J-B-ST-1000-INS	1
-1450	14.50 [571]	8.91 [351]	SMP-J-B-ST-INS	2

\* = NOT TOOLED

ITEM	COMPONENT	-HG	-GF
1	SHELL	SMP-J-B-G-ST-XXXX-SHL	SMP-J-B-F-ST-XXXX-SHL
2	SOCKET	SMP-J-B-H-ST-XXXX-SKT	SMP-J-B-G-ST-XXXX-SKT
3	INSULATOR	SMP-J-B-ST-XXXX-INS (SEE TABLE 2)	

NOTES:

-  REPRESENTS A CRITICAL DIMENSION.
- MINIMUM PUSHOUT FORCE FOR CENTER CONTACT: 6.67 N [1.5 LB].  
 INSULATOR: 6.67 N [1.5 LB].
- PRODUCT TO BE PACKAGED PER PACKING STANDARD CO-HD-WI-3040-M.  
 TRAY: TY-SMA001-1  
 COVER: TY-SMA001-2  
 -0645: 500 PARTS PER TRAY (5 PARTS PER POCKET),  
 -0700, -1000 & -1450: 300 PARTS PER TRAY (3 PARTS PER POCKET)
- APPLICABLE ON -1450 LENGTH ONLY.

UNLESS OTHERWISE SPECIFIED, DIMENSIONS ARE IN MILLIMETERS. TOLERANCES ARE:  
 DECIMALS ANGLES  
 X.X:  $\pm 0.3$  [01] 5°  
 X.XX:  $\pm 0.13$  [005]  
 X.XXX:  $\pm 0.051$  [0020]

PROPRIETARY NOTE

THIS DOCUMENT CONTAINS INFORMATION CONFIDENTIAL AND PROPRIETARY TO SAMTEC, INC. AND SHALL NOT BE REPRODUCED OR TRANSFERRED TO OTHER DOCUMENTS OR DISCLOSED TO OTHERS OR USED FOR ANY PURPOSE OTHER THAN THAT WHICH IT WAS OBTAINED WITHOUT THE EXPRESSED WRITTEN CONSENT OF SAMTEC, INC.

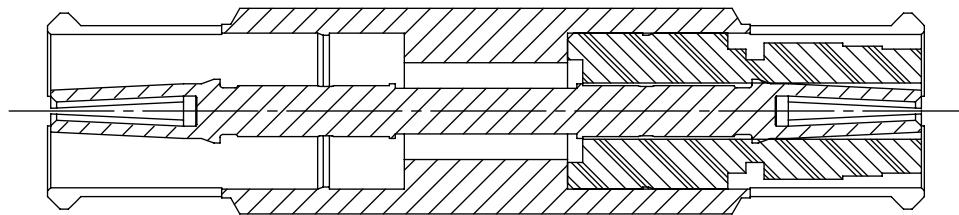
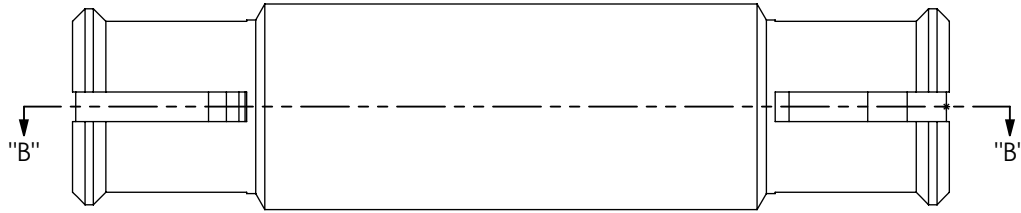


520 PARK EAST BLVD., NEW ALBANY, IN 47150  
 PHONE: 812-944-6733 FAX: 812-948-5047  
 e-Mail: info@SAMTEC.com code 55322

MATERIAL: DO NOT SCALE DRAWING SHEET SCALE: 8:1  
 PIN, SHELL: BeCu  
 INSULATOR: PTFE

DESCRIPTION: SMP BULLET - 50 OHM  
 DWG. NO. SMP-J-B-XX-ST-XXXX  
 BY: T MEEK 12/3/2010 SHEET 1 OF 2

IN-PROCESS 1  
 INSERT PIN / INSULATOR (1)  
 (-1450 OPTION ONLY)



SECTION "B"-"B"

PROPRIETARY NOTE

THIS DOCUMENT CONTAINS INFORMATION CONFIDENTIAL AND PROPRIETARY TO SAMTEC, INC. AND SHALL NOT BE REPRODUCED OR TRANSFERRED TO OTHER DOCUMENTS OR DISCLOSED TO OTHERS OR USED FOR ANY PURPOSE OTHER THAN THAT WHICH IT WAS OBTAINED WITHOUT THE EXPRESSED WRITTEN CONSENT OF SAMTEC, INC.

DO NOT SCALE DRAWING

SHEET SCALE: 8:1

**samtec**

520 PARK EAST BLVD, NEW ALBANY, IN 47150  
 PHONE: 812-944-6733 FAX: 812-948-5047  
 e-Mail info@SAMTEC.com code 55322

DESCRIPTION:

SMP BULLET - 50 OHM

DWG. NO.

SMP-J-B-XX-ST-XXXX

BY: T MEEK

12/3/2010

SHEET 2 OF 2