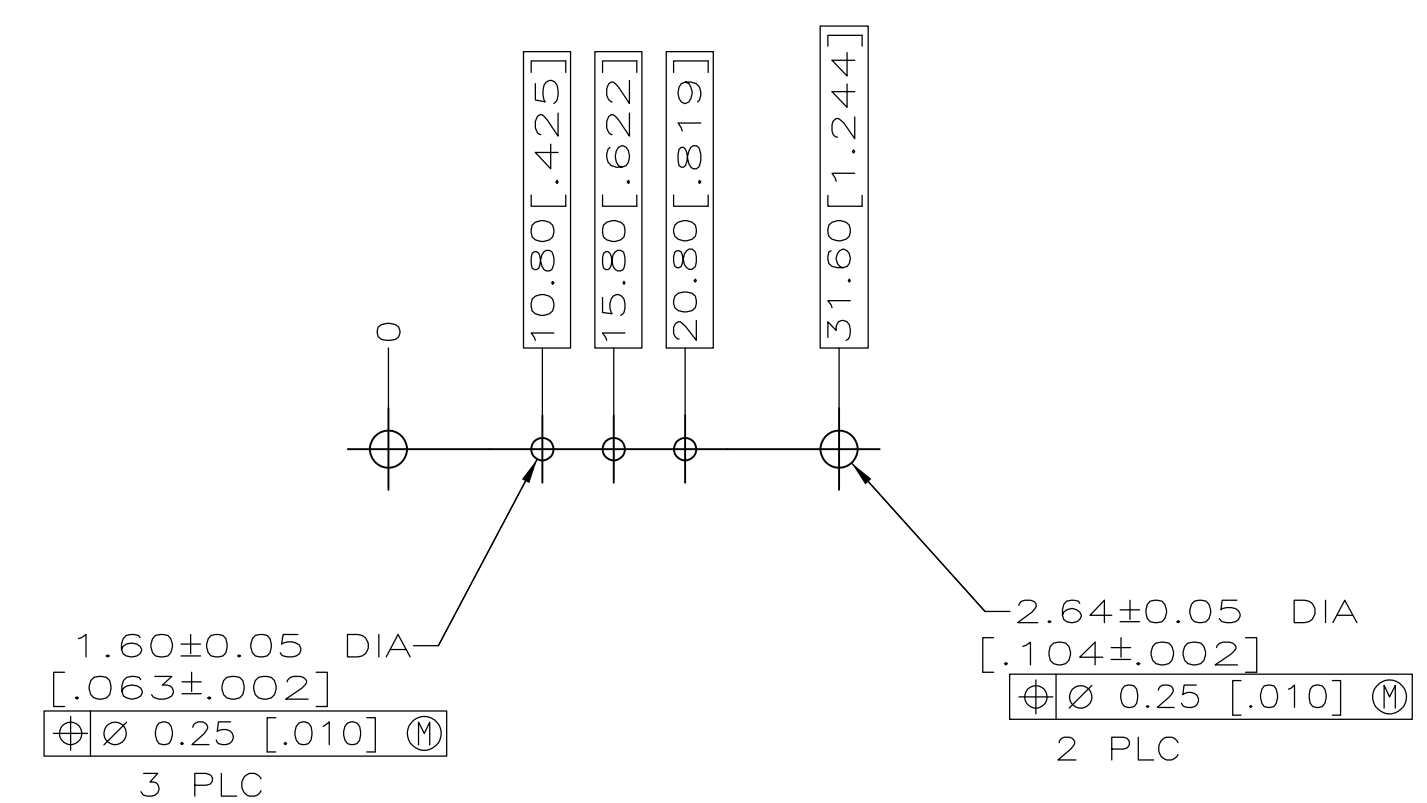
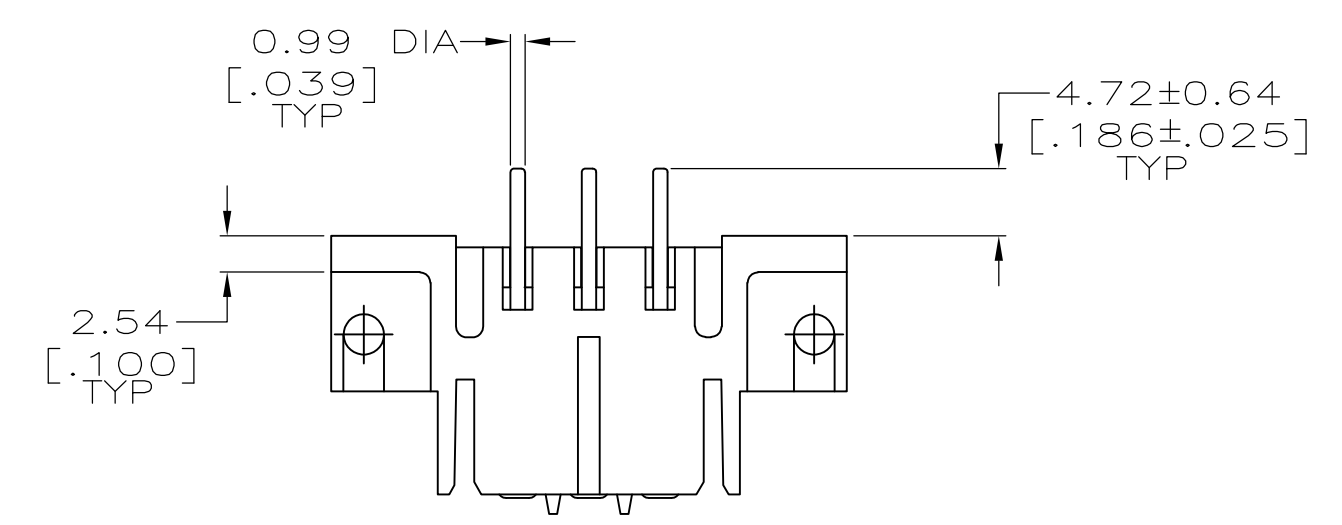
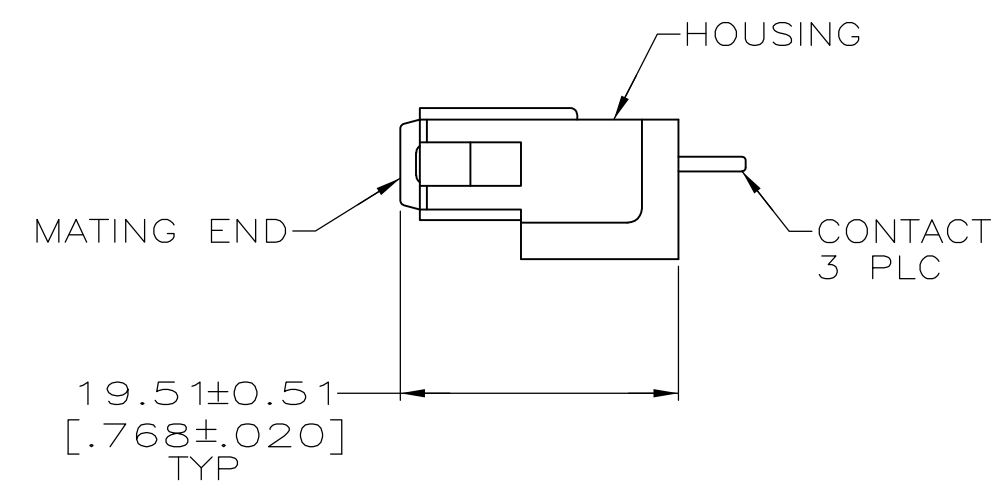
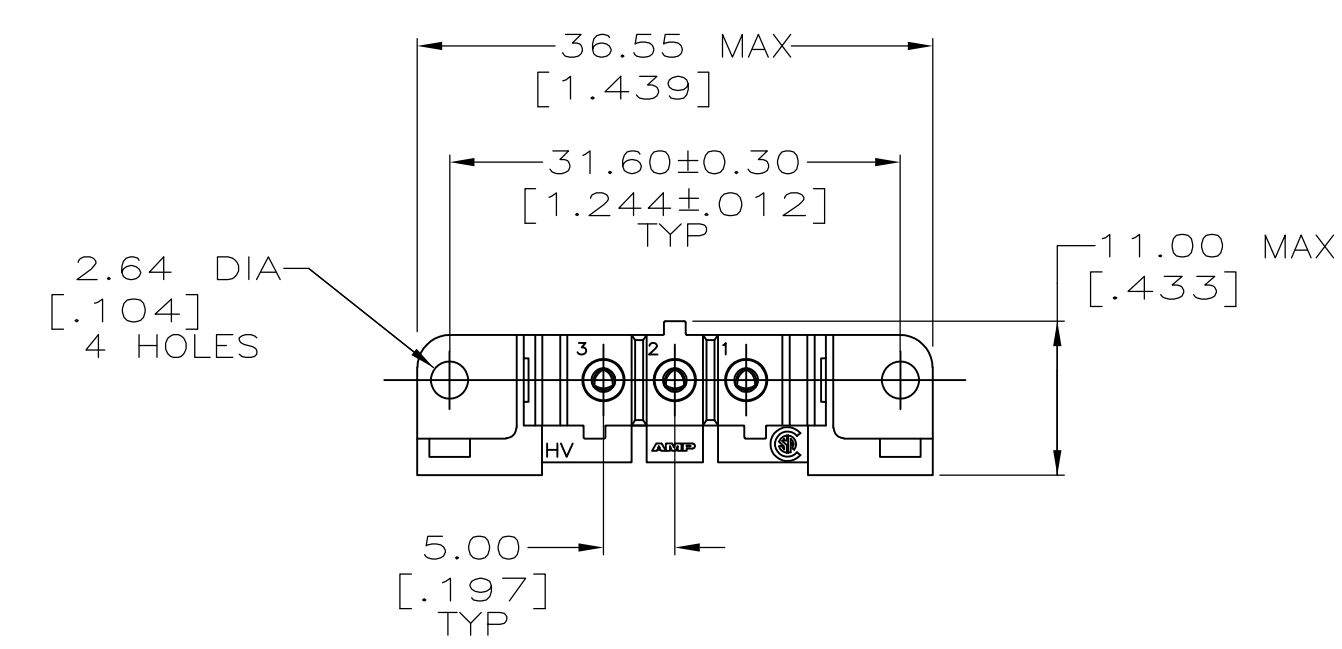


LOC	DIST	REVISIONS					
FT	0	P	LTR	DESCRIPTION	DATE	OWN	APVD
		J2		REVISED PER ECO-11-010839	25MAY11	RK	HMR



RECOMMENDED PC BOARD LAYOUT



- ① NYLON, RED.
- ② PHOSPHOR BRONZE.
- ③ 3.81um [.000150] MIN TIN-LEAD OVER 1.27um [.000050] MIN NICKEL.
- ④ 0.76um [.000030] MIN GOLD FOR A LENGTH OF 5.08 [.200] MIN FROM MATING END, 3.81um [.000150] MIN TIN-LEAD FOR A LENGTH OF 5.36 [.211] MIN FROM OPPOSITE END, BOTH OVER 1.27um [.000050] MIN NICKEL.
- ⑤ 3.81um [.000150] MIN TIN OVER 1.27um [.000050] MIN NICKEL.
- ⑥ 0.76um [.000030] MIN GOLD FOR A LENGTH OF 5.08 [.200] MIN FROM MATING END, 3.81um [.000150] MIN TIN FOR A LENGTH OF 5.36 [.211] MIN FROM OPPOSITE END, BOTH OVER 1.27um [.000050] MIN NICKEL.

⑥	207609-7
⑤	207609-6
④	207609-3
③	207609-1
CONTACT FINISH	PART NO

THIS DRAWING IS A CONTROLLED DOCUMENT.		DWN	L.SIPE	08/07/92	<b>STE</b> TE Connectivity			
DIMENSIONS: mm [INCHES]		CHK	R.STONE	8-25-92				
TOLERANCES UNLESS OTHERWISE SPECIFIED:		APVD	A. TRAVIS	8-25-92	NAME SOCKET HEADER ASSEMBLY, 3 POSN, IN-LINE, METRIMATE			
0 PLC ± -		PRODUCT SPEC						
1 PLC ± -		APPLICATION SPEC			SIZE	CAGE CODE	DRAWING NO	RESTRICTED TO
2 PLC ± 0.25 [.010]					A2	00779	G-207609	
3 PLC ± -					CUSTOMER DRAWING		SCALE	SHEET
4 PLC ± -							2:1	1 of 1
ANGLES ± ± -							REV	J2
FINISH		WEIGHT						
HOUSING: 1		CONTACTS: SEE TBL						