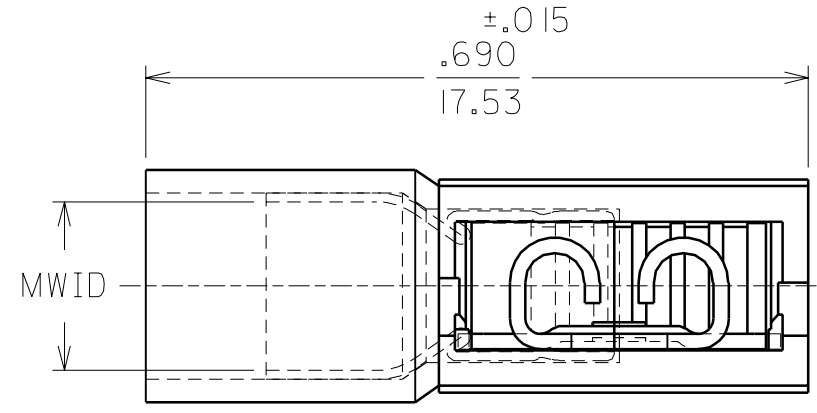
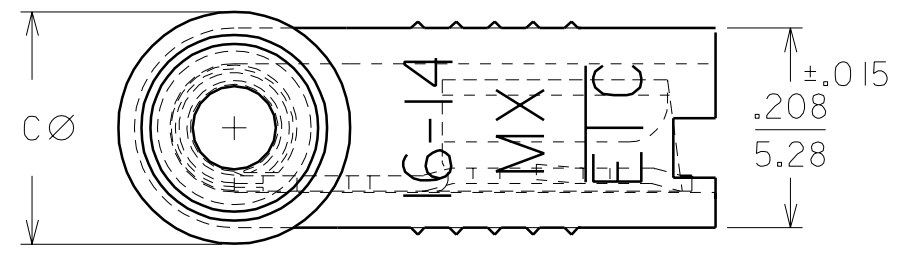
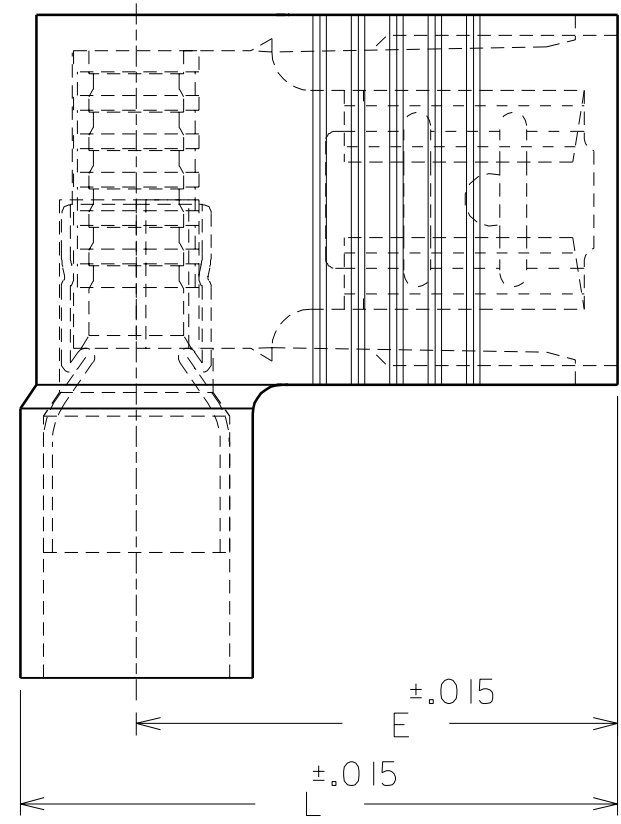


PART NO.	AWG	COLOR	MWID	TAB SIZE	L	E	C
AA-5222	22-18	RED	.150/3.81	.187X.020	.620/15.75	.512/13.00	.222/5.64
AA-5223	22-18	RED	.150/3.81	.187X.032	.620/15.75	.512/13.00	.222/5.64
BB-5224	16-14	BLUE	.170/4.32	.187X.020	.620/15.75	.500/12.70	.242/6.15
BB-5225	16-14	BLUE	.170/4.32	.187X.032	.620/15.75	.500/12.70	.242/6.15

NOTES:  
 1. MWID = MAX. WIRE INSULATION DIA.  
 2. ALL DIMENSIONS = INCHES/MM



CUST. DWG.

DIMENSIONS SHOWN (METRIC) INCH			
UNLESS OTHERWISE SPECIFIED TOLERANCES: ANGULAR ± 1/2°			
	INCH	METRIC	
3 PLACE	±	±	
2 PLACE	±	±	
1 PLACE	±	±	
DRAFT WHERE APPLICABLE MUST REMAIN WITHIN DIMENSIONS			
DRWG. BY	RCM	CHK'D. BY	JM
APP'D. BY	FP	SCALE	NO:NE

REVISE ONLY ON CAD SYSTEM			
TITLE AVIKRIMP FLAG FULLY INSULATED .187X.020 & .032			
molex ETC INC. PINELLAS PARK, FLA. 33781 U.S.A.		SHEET NO.	DATE 08/26/93
PART NO. SEE TABLE		DRWG. NO. CUST. DWG.	
FILE NAME CDFLA187 CST	THIS DRAWING CONTAINS INFORMATION THAT IS PROPRIETARY TO MOLEX-ETC INC. AND SHOULD NOT BE USED WITHOUT WRITTEN PERMISSION.		DIV. SIZE B

LTR.	REVISIONS