

4

3

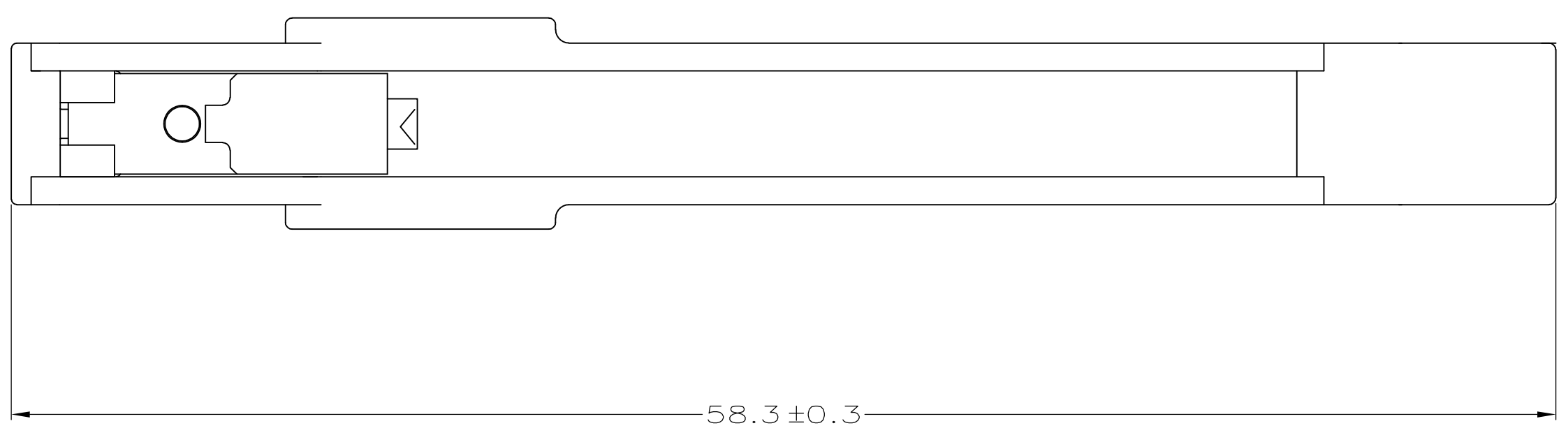
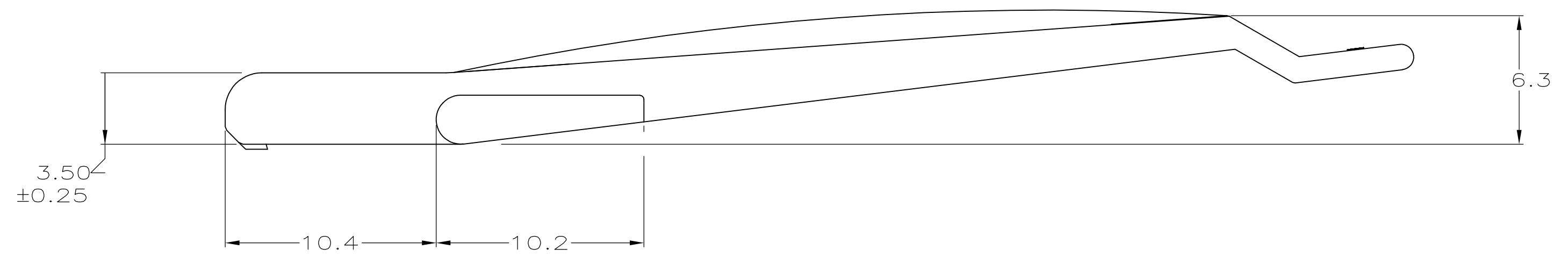
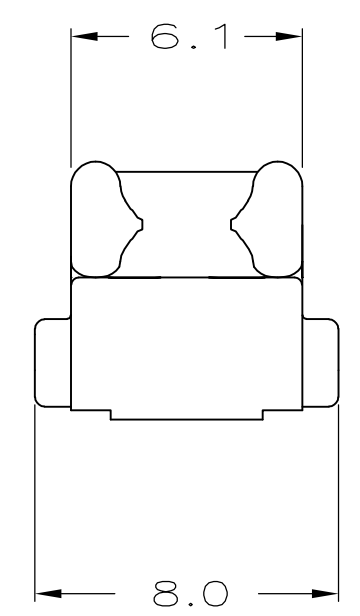
2

1

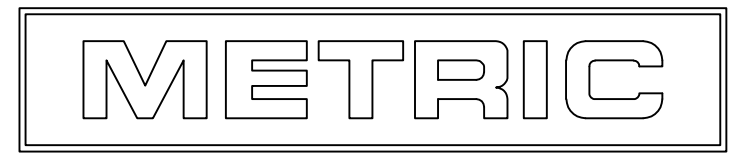
THIS DRAWING IS UNPUBLISHED. RELEASED FOR PUBLICATION .19  
 (C) COPYRIGHT 19 BY AMP INCORPORATED. ALL RIGHTS RESERVED.

LOC		DIST		REVISIONS			
P	LTR	DESCRIPTION	DATE	DWN	APVD		
AG	0						
	01	REVISED ECR-10-006444	39MAR10	AZ	SY		

1. USED IN AMP-DUAC/PL™ RECEPTACLE HOUSINGS. ONE REQUIRED PER HOUSING.
  2. INSTALL LATCH ASSEMBLY AFTER CUSTOMER SUPPLIED BACKSHELL. (USE OF BACKSHELL IS REQUIRED).
  3. LATCH ASSEMBLY AVAILABLE WITH STANDARD LEVER ARM, 794150-1.
- ⚠ MATERIAL: LATCH ARM - PBT, GLASS REINFORCED  
 COLOR - NATURAL  
 SPRING - STAINLESS STEEL.



794149-1  
 PART NUMBER



THIS DRAWING IS A CONTROLLED DOCUMENT.		DWN K. WHITAKER 8-15-97	AMP Incorporated Harrisburg, PA 17105-3608	
DIMENSIONS: mm		CHK R. SWING 8-15-97	NAME LATCH ASSEMBLY, EXTENDED, AMP-DUAC/PL™ POWER CONNECTOR	
TOLERANCES UNLESS OTHERWISE SPECIFIED:		APVD E. BEILES 8-15-97	PRODUCT SPEC 108-1646	
0 PLC ±-	1 PLC ±0.2	APPLICATION SPEC 114-6067		
2 PLC ±0.13	3 PLC ±-	SIZE A2	CAGE CODE 00779	DRAWING NO. C-794149
4 PLC ±-	ANGLES ±1°	WEIGHT -	RESTRICTED TO -	
MATERIAL ⚠	FINISH ⚠	CUSTOMER DRAWING		
		SCALE 5:1	SHEET 1 OF 1	REV 01