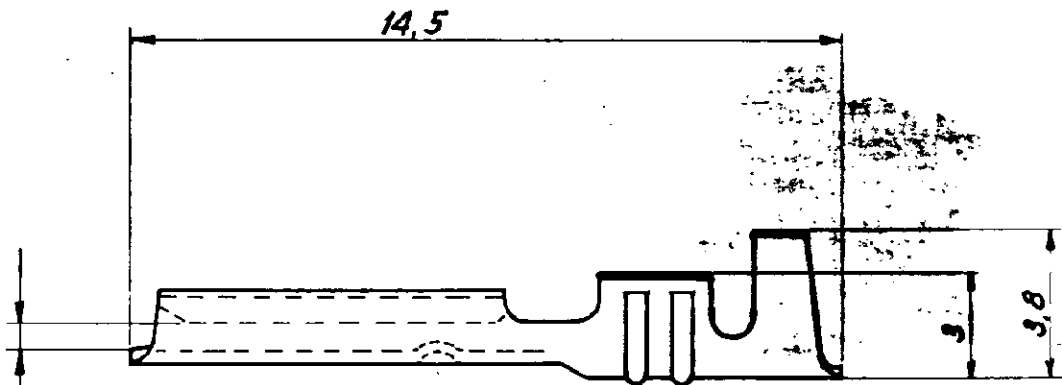
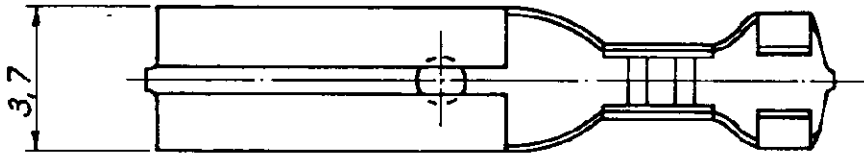


NUMBER
C-180439-441



ADATTO PER LINGUETTA DI SPESORE "A"
(VEDI TABELLA)



	DORATO	OTTONE	0,8	180439-3
	STAGNATO	OTTONE	0,5	180441-2
OBSOLETE →	NUOVO	OTTONE	0,5	180441-1
	STAGNATO	OTTONE	0,8	180439-2
OBSOLETED →	NUOVO	OTTONE	0,5	180439-1
	FINITURA	MATERIALE	"A"	AMP P/N

DIMENSIONS IN MM. DO NOT SCALE PRINT

PRINT DIST

© 1978 BY AMP INCORPORATED, ALL RIGHTS RESERVED. AMP PRODUCTS COVERED BY PATENTS AND OR PATENTS PENDING.

CUSTOMER COPY
REFERENCE ONLY

MATERIAL AND FINISH

VEDI TABELLA



AMP ITALIA
VIA CERVI 15
COLLENO (TORINO)

CLASS

B OBSOLETED FOR ECR 0489-96 G.V. 4-11-96

A REVISED PER 0101-96 A.C. 2-11-96

WIRE RANGE INSULATION TYPE
0,5 - 1,5 mm² 1,5 - 2,8 mm

LTR REVISION RECORD DR CHK DATE

TOLERANCE EXCEPT AS NOTED
± 0,4 - 1° 0'

SCALE

LOC 7

NO

C-180439-441

REV B

DE COMP. 8-11-73

DE APP

NAME .110 SERIES FASTON RECEPTACLE