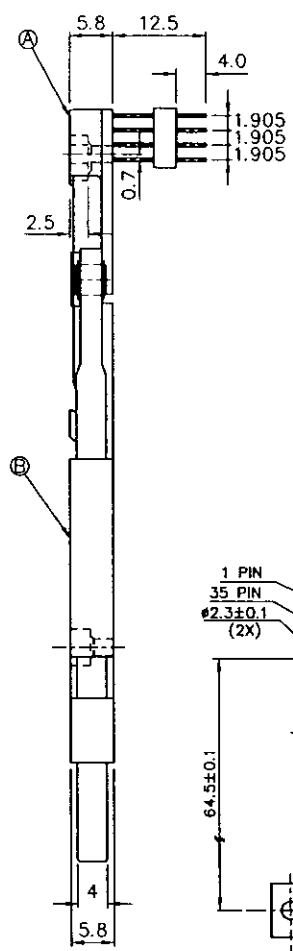
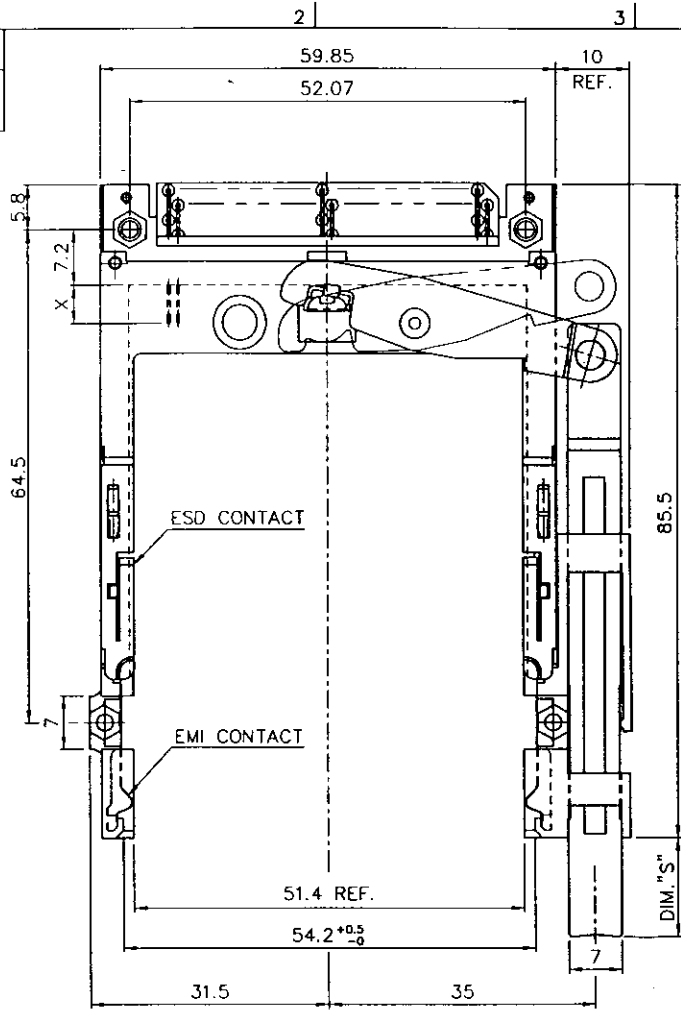


Tous droits strictement réservés. Reproduction ou communication à des tiers sans autorisation écrite du propriétaire.
 BERG ELECTRONICS
 Droits de reproduction BERG ELECTRONICS by

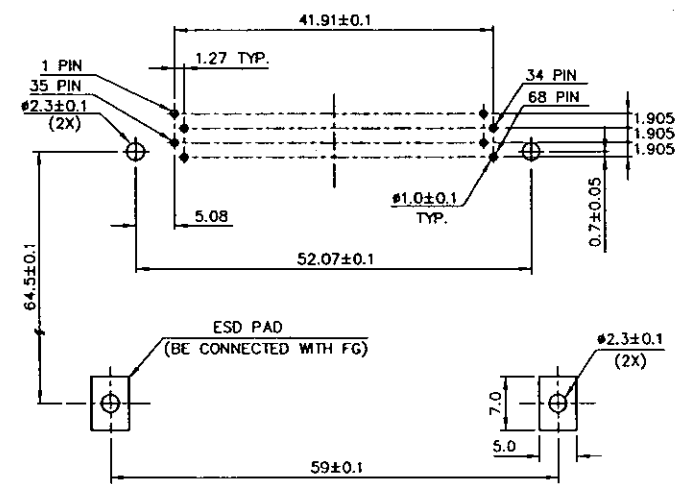
All rights strictly reserved. Reproduction or issue to third parties in any form without written authority from the proprietor.
 BERG ELECTRONICS
 Copyright BERG ELECTRONICS by

PRODUCT NO.
 88623-000**
 SEE TABLE I



- NOTES:
- EJECT FORCE : 3.5 Kg MAX.
 - EJECT TRAVEL: 8.0mm
 - MATERIAL
 - PART Ⓐ (HEADER ASS'Y)
 PLASTIC : HOUSING ...LCP UL94V-0 BLACK
 PIN : PHOSPHOR BRONZE
 - PART Ⓑ (EJECT MECHANISM ASS'Y)
 PLASTIC : GUIDE: POLYPHTHARAMID UL94V-0 BLACK
 PUSH ROD: POLYPHTHARAMID UL94V-0 BLACK
 PLATE : STAINLESS
 EMI CONTACT: PHOSPHOR BRONZE
 - FINISH (PIN) -
 UNDER PLATING : 0.5 μm MIN. Ni
 CONTACT AREA : 0.1 μm MIN. GOLD OVER 0.5 μm MIN. Pd-Ni
 SOLDER TAIL : 2.5 μm MIN. Sn-Pb
 - DIM "X"

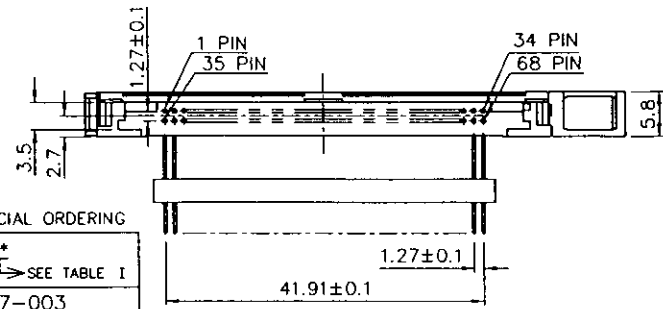
4.25±0.1	3.5±0.1	5.0±0.1
OTHERS	36,67	1,17,34,35,51,68



**	DIM"S"	PUSH ROD COLOR
AA	8.0	BLACK
AB	8.0	BLUE
AP	8.0	PURPLE
CA	13.0	BLACK
CB	13.0	BLUE
CP	13.0	PURPLE
FA	21.0	BLACK
FB	21.0	BLUE
FP	21.0	PURPLE

USE THE FOLLOWING P/N FOR OFFICIAL ORDERING

Ⓑ	EJECT MECH ASS'Y	92192-00** SEE TABLE I
Ⓐ	HDR ASS'Y	94337-003
DESCRIPTION	P/N	



mat'l code		tolerance unless otherwise specified		CUSTOMER COPY		BERG ELECTRONICS	
rev.	ecn no.	dr	date	linear	±0.30	projection	title
A	T60009	WL	01/05/98	angles	±2°	⊕	68P EJECTOR HEADER ASS'Y TYPE 1/2/3
		dr	WENDY CHEN 11/02/95	unit	mm/inch	product family	code
		enqr	JOSEPH HSIA 11/02/95	scale	A3	size	TWN
		chr	JOSEPH HSIA 11/02/95	scale	1.5:1	dwg no.	88623
		oppd	JENN TSAO 11/02/95			sheet	1 OF 1
sheet index	revision sheet						
	A 1						