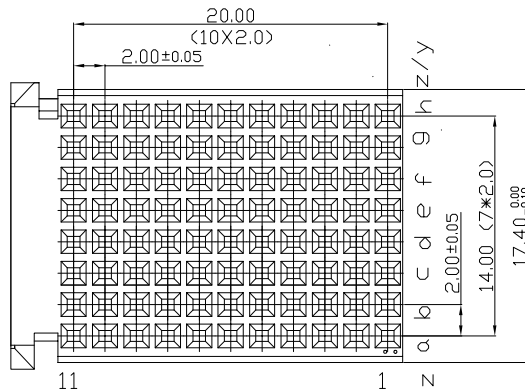
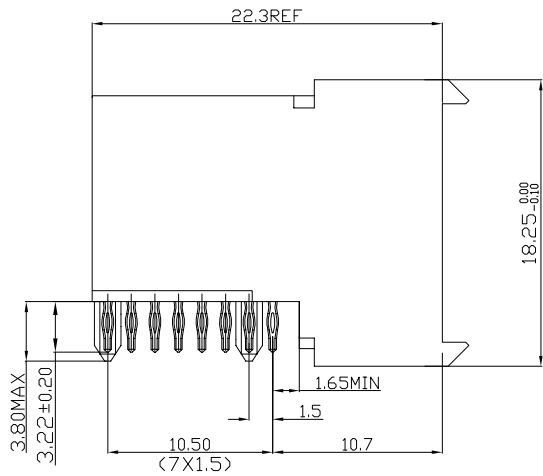


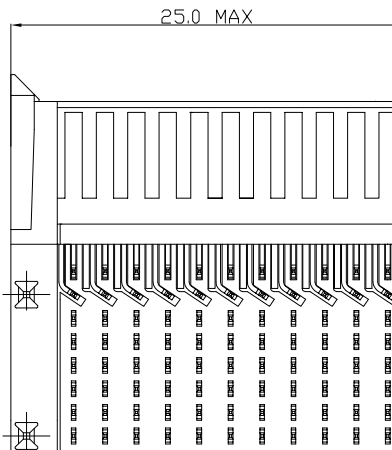
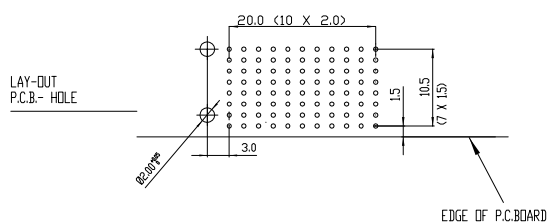
Tous droits strictement reserves. Reproduction ou communication a des tiers interdite sous quelque forme que ce soit sans autorisation ecrite du proprietaire. Propriete de c FCI. Droits de reproduction FCI.



All rights strictly reserved. Reproduction or issue to third parties in any form whatever is not permitted without written authority from the proprietor. Property of FCI. Copyright FCI.



PERFORMANCE CHARACTERISTICS
 CURRENT RATING 1.5A AT 20°C (FULLY LOADED)
 1 A AT 70°C (FULLY LOADED)
 RATED VOLTAGE : 500 V AC (CONT /CONT)
 OPERATING TEMPERATURE : -55°C TO 125°C
 CONTACT RESISTANCE 20 MΩ MAX
 INSERTION FORCE : 0.75N MAX/CONT
 EXTRACTION FORCE : 0.15N MIN/CONT
 INSULATION RESISTANCE : 10⁴ MΩ MIN



- NOTES 1:**
- LEAD FREE INDICATOR LF=LEAD FREE
 - PERFORMANCE LEVEL INDICATOR (REF DWG NO.BSC 201844.003)
 - 2. THIS PRODUCT IS CSA APPROVED. THIS PRODUCT IS UL RECOGNIZED.
 - 3. FOR RECOMMENDED PTH DIMENSIONS REFER DRAWING : BS.A201572.001
 - 4. THIS PRODUCT (LF) MEETS EUROPEAN UNION DIRECTIVES AND OTHER COUNTRY REGULATIONS AS DESCRIBED IN GS-22-008

rev	ecn no	dr	date
A	CONVERSION REVISION 01	KN	14-09-01
B	DG05-0381	Kason	10-10-05
C	DG07-0362	Kason	05-09-07
D	DG10-0110	NZ	03-22-10

		www.fciconnect.com		✓	tolerance 1DEC +0.2 1DEC 2DEC +0.1 2DEC ANGLES #1° HÖEKEN	projection 	MM ↔
Dr	W.Panis	30-04-96	Product family	MILLIPICS	size	A4	Scale 3/1
Eng			Spec ref		ECN		
Chr			Material				
Appr							
title MPACS 8+2R RA RCP CONN TYPE F/NO SHIELDED						dwg no BS,C ,202258,003	Rev. D
catalog no HM2R89PA8100----				CUSTOMER	sheet 1 of 1		