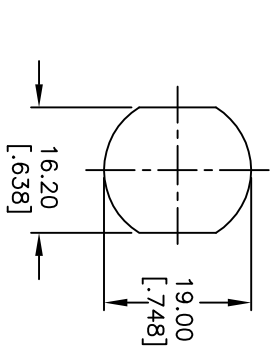
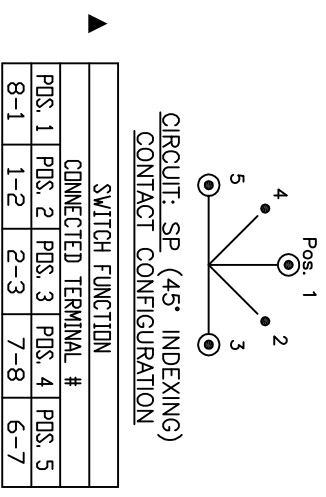


- NOTES:
1. ALL DIMENSIONS IN MM [INCH]
 2. GENERAL TOLERANCE: X.X=±0.4
X.XX=±0.25
 3. TERM. NOS. FOR REF. ONLY
 4. CONTACT RATING: 4A @125VAC/28VDC, 2A @250VAC
 5. DIELECTRIC STRENGTH: 1KV RMS min. at sea level
 6. ELECTRICAL LIFE: 10,000 make-and-break cycles at full load.
 7. MATERIALS:

CONTACTS: Silver Plated CU (Q Contact material)
 TERMINALS: GOLD Plated Cu (Q Contact material)
 MOUNTING NUT: Nickel Plated zinc alloy
 CONTACT SPRING: Piano Wire
 ▲KEYS (2): Brass : Key Code A126
 LOCK: Bright Ni plated zinc alloy with NI facing
 TUMBLER Mechanism: 4-disc tumbler cylinder.
 8. ▲ DENOTES CRITICAL PARAMETER.



RECOMMENDED PANEL LAYOUT



LEGEND

- =Detent Positions (45° or 90°)
- ⊙ =Key pull possible in these positions

REV.	ECN No.	DESCRIPTION	DATE	CHKD
B	20259	ADD KEY CODE TO DESCRIPTION	11/03/11	BGL
A	13944	RELEASED FOR PRODUCTION	4/20/04	AR

SCALE	DATE	DR	DWG	REV
1:1	4/20/04	AR	K200258	B



K0130MA126

THE INFORMATION CONTAINED IN THIS DOCUMENT IS PROPRIETARY TO E-SWITCH AND IS NOT TO BE COPIED OR TRANSFERRED