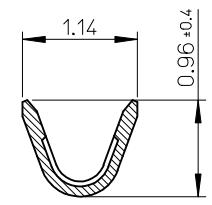
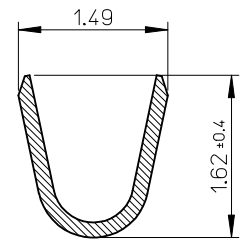


- NOTES.
- 適合ハウジング: 504051-****
APPLICABLE HOUSING : 504051-****
 - 材質: 銅合金
MATERIAL : COPPER ALLOY
 - メッキ仕様: 金メッキ、ニッケル下地
PLATING : GOLD PLATING
NICKEL UNDER PLATING
 - 圧着後、CS-504052-002の内容を満たす事
FULFILL THE CONTENTS OF
CS-504052-002 AFTER CRIMP



SECTION A-A



SECTION B-B

φ0.54 - 0.8	AWG #30 - #32	5040520298	CHAIN
INS. RANGE	WIRE RANGE	ORDER No.	FORM

REVISED EC NO: J2014-1702 DRWN: YMAKE 2014/05/21 CHKD: KASAKAWA 2014/05/21 APPR: NUKITA 2014/05/22	GENERAL TOLERANCES (UNLESS SPECIFIED)		DIMENSION STYLE MM ONLY	SCALE 20:1	DESIGN UNITS METRIC	THIRD ANGLE PROJECTION
	10 UNDER	± 0.2	DRAWN BY THANYU	DATE 2012/09/04	1.5 WIRE TO BOARD CONN. REC CRIMP TERMINAL (AWG #30 - 32) molex	
	10 OVER 30 UNDER	± 0.25	CHECKED BY KASAKAWA	DATE 2012/09/04		
	30 OVER	± 0.3	APPROVED BY YOITO	DATE 2012/09/04		
ANGULAR	± 3 °	MATERIAL NO.	DOCUMENT NO.			
	DRAFT WHERE APPLICABLE MUST REMAIN WITHIN DIMENSIONS		SEE CHART	SD-504052-002	SHEET NO. 1 OF 1	
			SIZE A3	THIS DRAWING CONTAINS INFORMATION THAT IS PROPRIETARY TO MOLEX INCORPORATED AND SHOULD NOT BE USED WITHOUT WRITTEN PERMISSION		