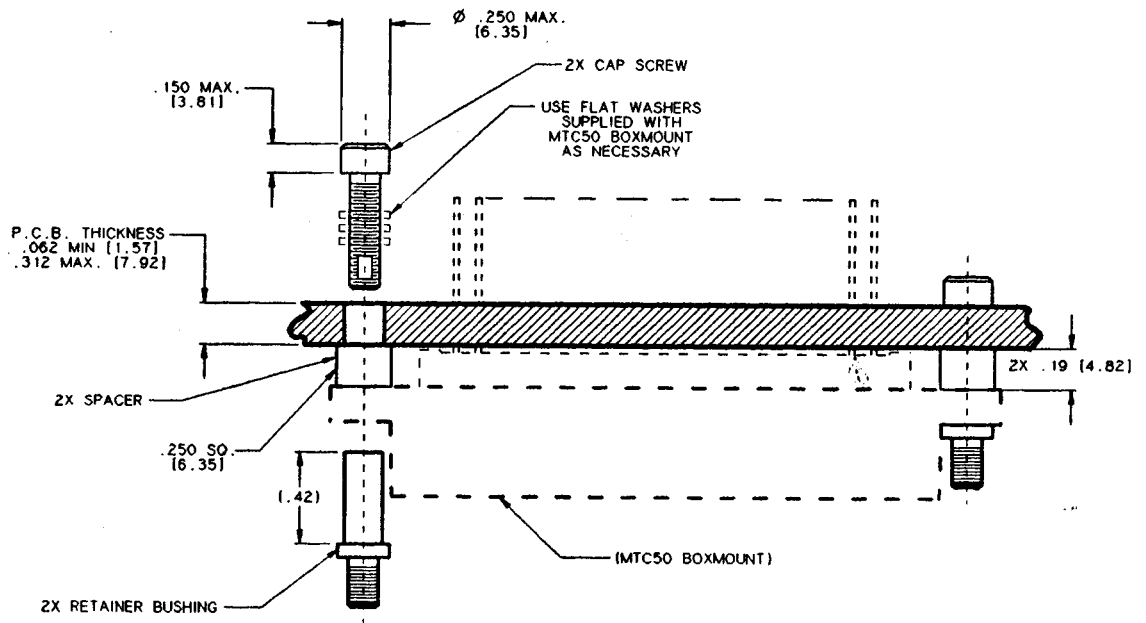


REVISIONS		DATE	APPROVED
LTR	DESCRIPTION		
N/C	INITIAL RELEASE PER EGN T-18900	1-28-94	[Signature]



- NOTES:
- THIS HARDWARE KIT IS USED TO MOUNT THE MTC50 BOXMOUNT TO A PRINTED CIRCUIT BOARD
 - ITEMS ARE SHIPPED UNASSEMBLED IN A PLASTIC BAG.
 - FINISH:
 - A. RETAINER BUSHING PASSIVATED PER QQ-P-35
 - B. CAP SCREW PASSIVATED PER QQ-P-35
 - MATERIAL:
 - A. RETAINER BUSHING SS 300 SERIES PER QQ-S-763
 - B. CAP SCREW SS 300 SERIES PER QQ-S-763
 - C. SPACER NYLON

If this document is printed it becomes uncontrolled.
Check with the web for latest revision.

SPECIFICATION CONTROL DRAWING © Raychem Corporation 1994

UNLESS OTHERWISE SPECIFIED DIMENSIONS ARE IN INCHES. METRIC DIMENSIONS ARE IN BRACKETS. DECIMALS .XXX ±.010 [.254 mm] .XX ±.02 [.51 mm] ANGLES .X ± WEIGHT MAX. lbs (g)	DRAWN	CAR	1-26-94	Raychem RAYCHEM CORPORATION 300 CONSTITUTION DRIVE MENLO PARK, CALIFORNIA 94025
	CHECKED	[Signature]	1-27-94	
	APPROVED	PJD	1-28-94	TITLE
	APPROVED			P.C. BOARD MOUNTING KIT FOR MTC50. BOXMOUNT CONNECTORS
	CAD NAME	008049-1		SIZE
	THIRD ANGLE PROJECTION			CODE IDENT. NO.
				CHA-0279
				REV
				N/C
				DO NOT SCALE THIS DRAWING
				SHEET 1 OF 1