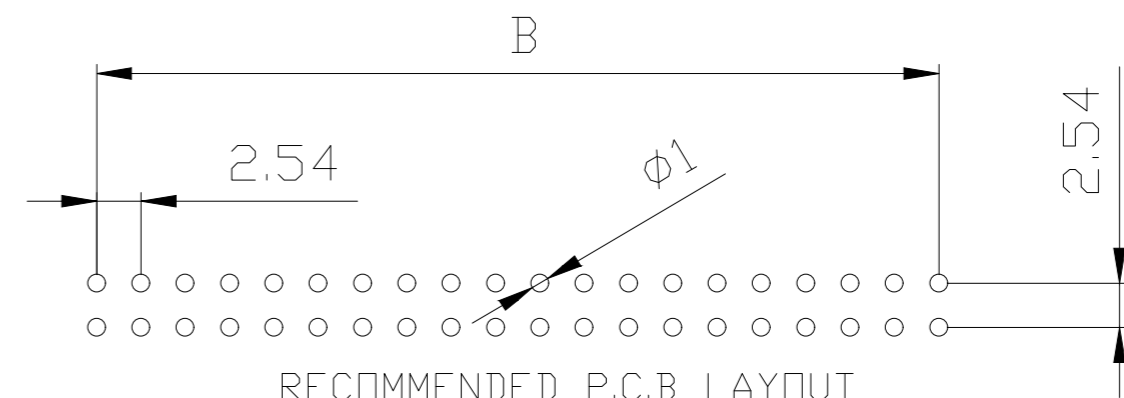


MATERIALS:  
 INSULATOR: P.B.T.30%GLASS FIBER,UL94V-0  
 CONTACT MATERIAL: BRASS OR PHOSPHOR BRONZE,  
 UNDERPLATED: NICKEL  
 CONTACT AREA: 1u"~30u" SELECTIVE GOLD  
 ELECTRICAL:  
 CURRENT RATING: 1AMP.  
 INSULATION RESISTANCE: 1000MΩ MIN.  
 DIELECTRIC WITHSTANDING: 500VAC  
 OPERATING TEMPERATURE: -55°C~+105°C



RECOMMENDED P.C.B LAYOUT  
 TOLERANCES: ±0.05mm

POSITION	A	B	POSITION	A	B
6P	12.94	5.08	26P	38.40	30.48
8P	15.48	07.62	28P	40.60	33.02
10P	18.10	10.16	30P	43.50	35.56
12P	20.51	12.70	34P	48.58	40.64
14P	23.05	15.24	40P	56.20	48.26
16P	25.64	17.78	50P	69.00	60.96
18P	28.15	20.32	60P	81.75	73.66
20P	30.78	22.86	64P	86.83	78.74
24P	35.86	27.94			

Scale	FREE
TOLERANCE	
X.X	±0.4
X.XX	±0.25
X.XXX	±0.15
DIM	TOL
Angle	±3°
Angle	TOL

①	Drawn	26.05.2014	Ray
Id.	Modification	Date	Name

Date: 26.05.2014  
 Name: Ray  
 Customer-No.  
 ASSMANN WSW-No.  
**ASSMANN**  
 WSW components

Customer-No.	
ASSMANN WSW-No. AWLP xx/3,2-G	
Drawing-No.	rev00
ASS 6447 CO	Sheet

**RoHS compliant**  
 Unit: mm