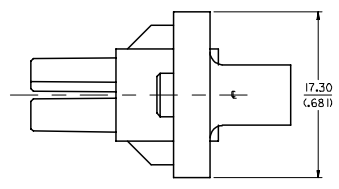
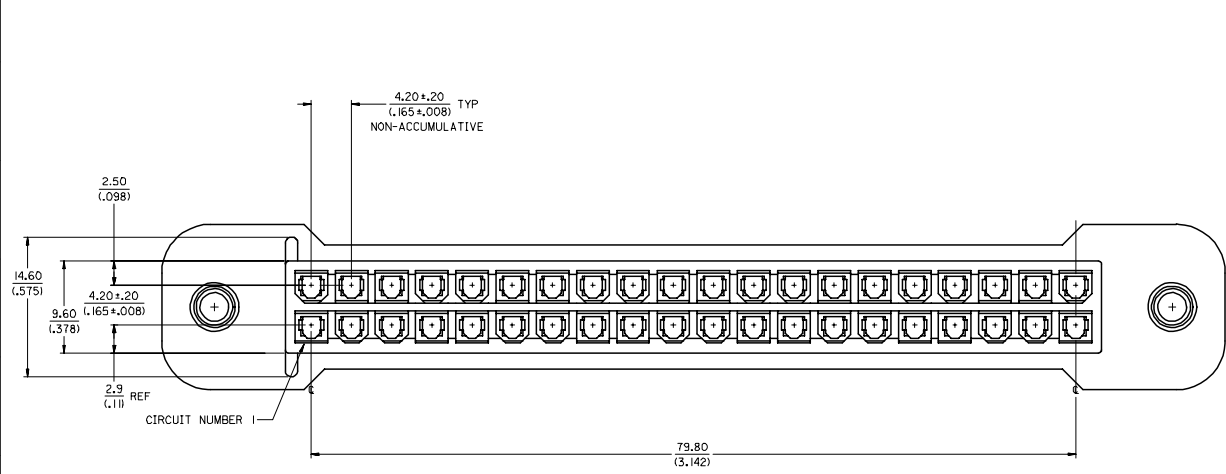


20 19 18 17 16 15 14 13 12 11 10 9 8 7 6 5 4 3 2 1



- NOTES:**
1. MATERIAL:
NYLON 46, GLASS-FILLED, UL94V-0,
COLOR - BLACK
 2. FINISH NONE
 3. PRODUCT SPECIFICATION: PS-43759-0001
 4. PART IS FOR USE WITH 5556, 44476 AND 45750 SERIES TERMINALS.
 5. THIS CONNECTOR ALLOWS FOR .050/(1.27) MAX. MISALIGNMENT IN ANY DIRECTION.
 6. A MAXIMUM TOLERANCE OF .050/(1.27) ALLOWS FOR 2 POINTS OF ELECTRICAL CONTACT. A MAXIMUM TOLERANCE OF .020/(.51) ALLOWS FOR 4 POINTS OF CONTACT.
 7. PART MATES WITH MINI-FIT B.M.I. HEADER #43973.
 8. CONNECTOR ASSEMBLIES ARE NOT TO BE MATED OR UNMATED WHILE CIRCUITS ARE LIVE.
 9. PART SHOULD BE PUNCHED IN THE DIRECTION OF CONNECTOR INSERTION.
 10. PART BOW SPECIFICATION MEASURED AT DATUM [-A-] = .15/(.006) PER INCH MAXIMUM. BOW DIRECTION DEFINED BY FIGURE 1.

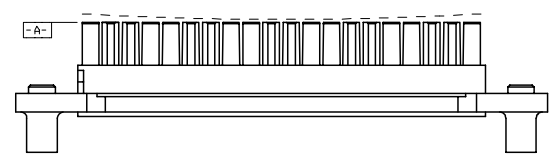
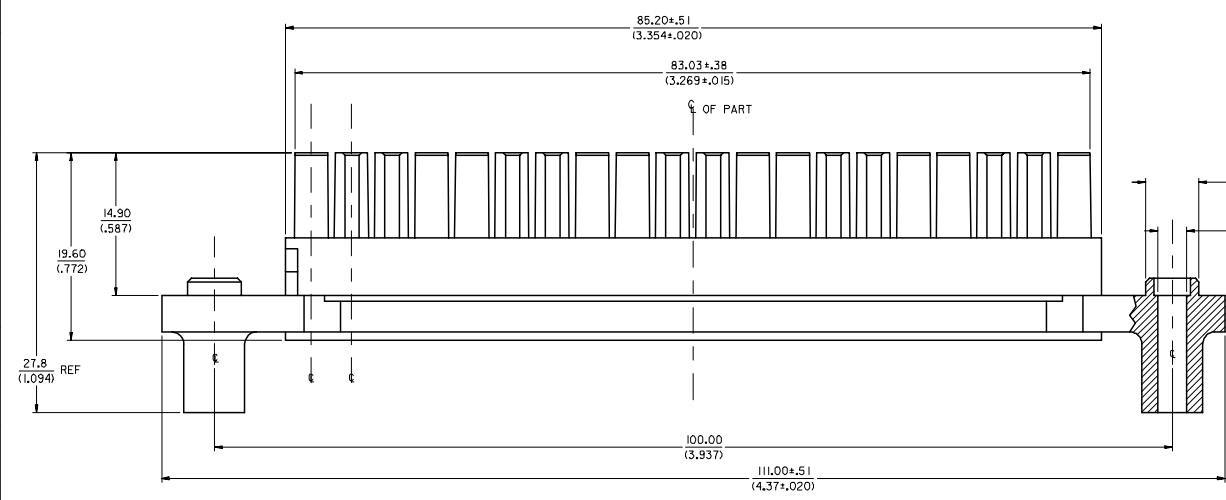
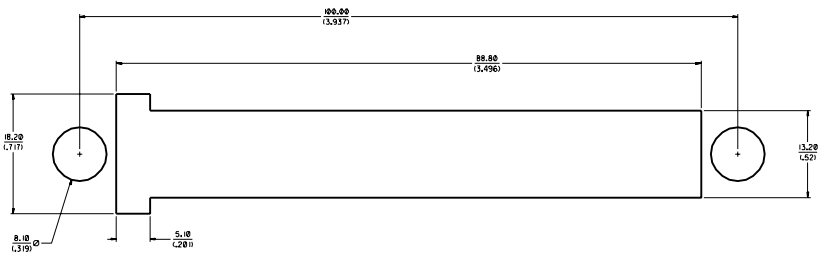


FIGURE 1

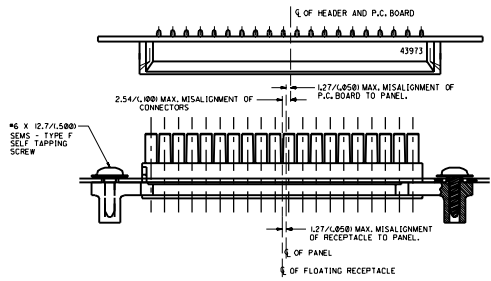
2	A
1	A4
SHEET REV	

REV NOTES 3 & 4 EC NO: UCP2006-2160 DRAWN: ADMANIL 2006/03/28 CHKD: BPLUAR 2006/03/22 APPR: JCOMERL 2006/03/23	QUALITY SYMBOLS	GENERAL TOLERANCES (UNLESS SPECIFIED)	DIMENSION STYLE	SCALE	DESIGN UNITS	THIRD ANGLE PROJECTION															
	$\nabla=0$ $\nabla=0$	<table border="1"> <tr> <th></th> <th>mm</th> <th>INCH</th> </tr> <tr> <td>4 PLACES</td> <td>± .15</td> <td>± .005</td> </tr> <tr> <td>3 PLACES</td> <td>± .10</td> <td>± .004</td> </tr> <tr> <td>2 PLACES</td> <td>± 0.38</td> <td>± .015</td> </tr> <tr> <td>1 PLACE</td> <td>± .50</td> <td>± .020</td> </tr> </table>		mm	INCH	4 PLACES	± .15	± .005	3 PLACES	± .10	± .004	2 PLACES	± 0.38	± .015	1 PLACE	± .50	± .020	MM/IN	4:1	METRIC	
		mm	INCH																		
	4 PLACES	± .15	± .005																		
3 PLACES	± .10	± .004																			
2 PLACES	± 0.38	± .015																			
1 PLACE	± .50	± .020																			
DESCRIPTION	<table border="1"> <tr> <td>DRAWN BY</td> <td>PEARSON</td> <td>DATE</td> <td>1998/01/14</td> </tr> <tr> <td>CHECKED BY</td> <td>MUELLER</td> <td>DATE</td> <td>1998/01/14</td> </tr> <tr> <td>APPROVED BY</td> <td>EDGLEY</td> <td>DATE</td> <td>1998/01/14</td> </tr> </table>	DRAWN BY	PEARSON	DATE	1998/01/14	CHECKED BY	MUELLER	DATE	1998/01/14	APPROVED BY	EDGLEY	DATE	1998/01/14	TITLE	PANEL MOUNT RECEPTACLE 40 CKT BLIND MATE MINI-FIT SERIES						
DRAWN BY	PEARSON	DATE	1998/01/14																		
CHECKED BY	MUELLER	DATE	1998/01/14																		
APPROVED BY	EDGLEY	DATE	1998/01/14																		
DRAFT WHERE APPLICABLE MUST REMAIN WITHIN DIMENSIONS	MATERIAL NO.	DOCUMENT NO.	MOLEX INCORPORATED																		
SIZE	439740002	SD-43974-002	THIS DRAWING CONTAINS INFORMATION THAT IS PROPRIETARY TO MOLEX INCORPORATED AND SHOULD NOT BE USED WITHOUT WRITTEN PERMISSION																		

19 18 17 16 15 14 13 12 11 10 9 8 7 6 5 4 3 2 1



RECOMMENDED PANEL CUT-OUT FOR 1.27/0.30/0.650±.012 THICK PANEL
(SEE NOTE 9)



ALIGNMENT TOLERANCES FOR 1.27(0.050) MAX. BOARD-TO-PANEL MISALIGNMENT
IN 1.27(0.050) RECEPTACLE FLOAT

SEE SHEET 1 FOR: DIM. CHG. APPL.	QUALITY SYMBOLS	GENERAL TOLERANCES UNLESS SPECIFIED	SCALE	DESIGN UNITS	THIRD ANGLE PROJECTION	DIMENSIONS			SHT	REV
	4 PLACES ±0.15	mm	1:1	mm	ISO	mm	inch	mm	inch	REVISE ON CAD ONLY
CRITICAL	3 PLACES ±0.15	2.---	DRAWN BY & DATE	PEARSON 01/13/98	TITLE: PANEL-MOUNT RECEPTACLE					
	2 PLACES ±0.38	1.015	CHECKED BY & DATE	MUELLER 01/15/98	40-CIRCUIT BLIND MATE					
APPROVED BY & DATE	1 PLACE ±0.38	2.---	EDDLEY 01/13/98	MINI-FIT SERIES						
	1 PLACE ±0.38	2.---	CD FILENAME	S4397404.DCN	MATERIAL NO.	SD-43974-002	MOLEX INCORPORATED			
ANGULAR: 1/2°	DRAFT WHEN APPLICABLE MUST REMAIN WITHIN DIMENSIONS		CD FILENAME	S4397404.DCN	DRAWING NO.	SD-43974-002	SHEET NO. 2			
THIS DRAWING CONTAINS INFORMATION THAT IS PROPRIETARY TO MOLEX INCORPORATED AND SHOULD NOT BE USED WITHOUT WRITTEN PERMISSION.					SIZE					D