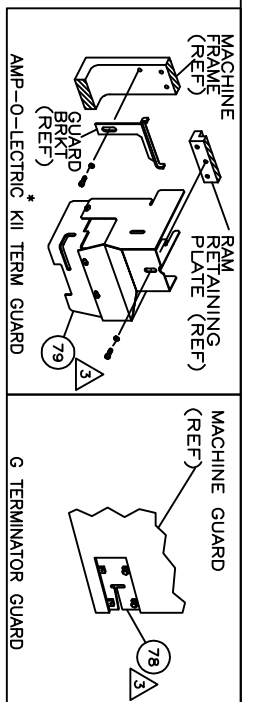
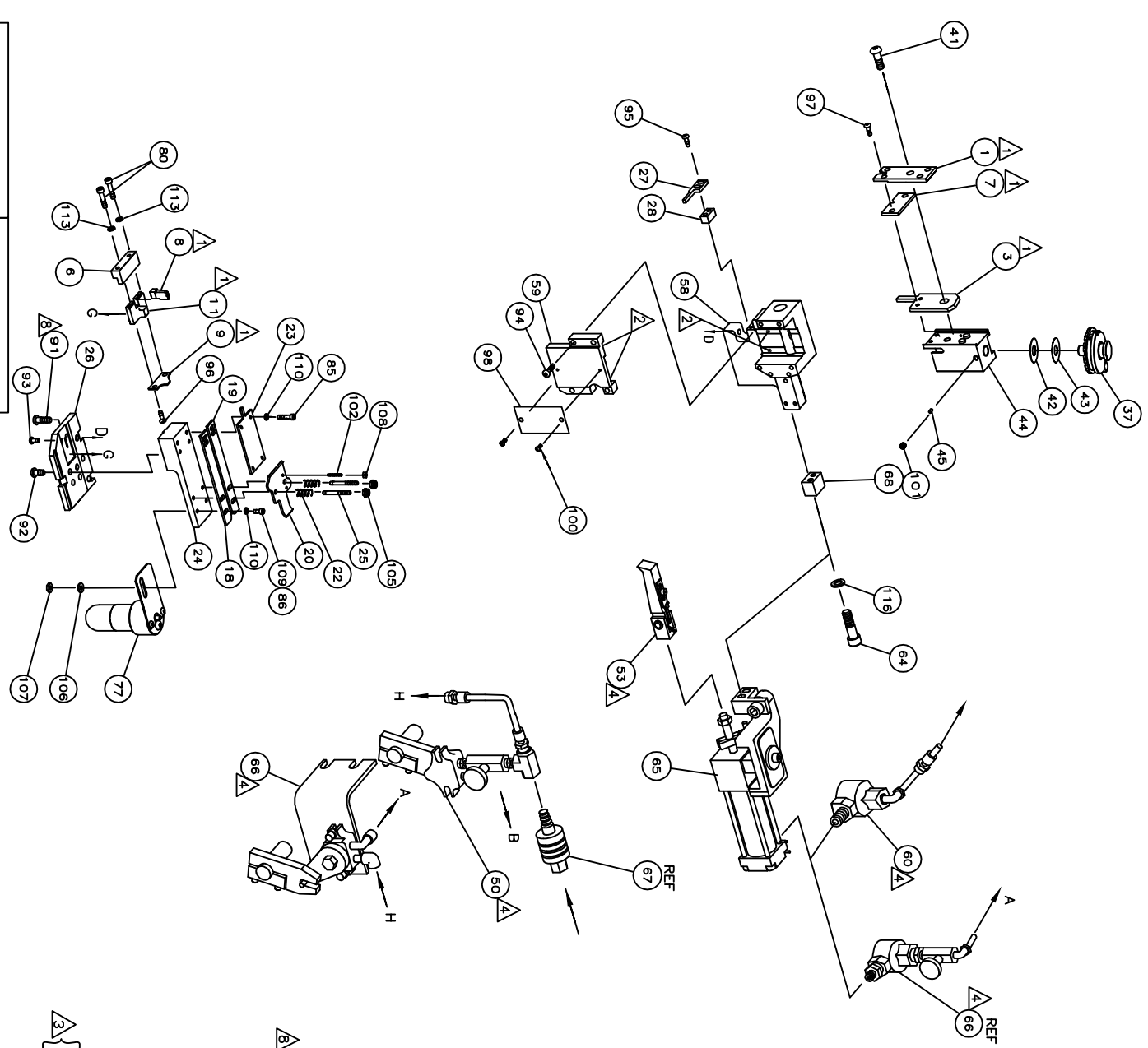


PART NUMBER	REV	FIRST USED
1855691-1	A	565435-5
1855691-2	A	354500-1
7-1855691-7	A	-

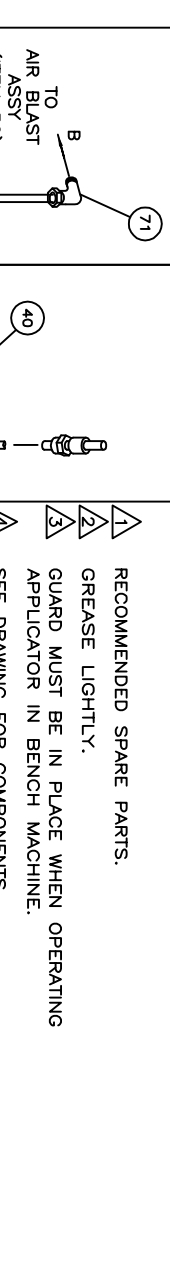


TERMINAL NAME:	AMP/VALVE SPICE	CRIMPING DATA	REF SETTINGS
	62305	CRIMP HEIGHT .055±.002[1.65±0.05mm]	A4
	62304	CRIMP HEIGHT .057±.002[1.45±0.05mm]	B7
		CRIMP HEIGHT .052±.002[1.32±0.05mm]	C7
		CRIMP HEIGHT .044±.002[1.12±0.05mm]	E0
		CRIMP SIZE .110 [2.79mm]	
		CRIMP TYPE F	
		CRIMP RANGE 600-3000	
		WIRE STRIP LENGTH .279-.341	
		FEED .315	
		INSUL 408-8039	
		APPL INST SET UP GAGE LAYOUT	
		408-8039	
		WIRE STRIP LENGTH .279-.341	

REF	DESCRIPTION	QTY	UNIT	TERMINAL
A4	BENCH MODEL K AIRFEED	1		
B7	BENCH MODEL G AIRFEED	1		
C7	BENCH MODEL K AIRFEED	1		
E0	BENCH MODEL G AIRFEED	1		



QTY	UNIT	PART NO	DESCRIPTION	TERMINAL
1		217238-1	GENERAL INSTRUCTION PACKAGE	129
1		4088039	EF APPL INST 408-8039	128
1				127
1				126
1				125
1				124
1				123
1				122
1				121
1				120
1				119
1				118
1				117
1				116
1				115
1				114
1				113
1				112
1				111
1				110
1				109
1				108
1				107
1				106
1				105
1				104
1				103
1				102
1				101
1				100
1				99
1				98
1				97
1				96
1				95
1				94
1				93
1				92
1				91
1				90
1				89
1				88
1				87
1				86
1				85
1				84
1				83
1				82
1				81
1				80
1				79
1				78
1				77
1				76
1				75
1				74
1				73
1				72
1				71
1				70



RECOMMENDED SPARE PARTS.

GREASE LIGHTLY.

GUARD MUST BE IN PLACE WHEN OPERATING APPLICATOR IN BENCH MACHINE.

SEE DRAWING FOR COMPONENTS.

CRIMP HEIGHTS SHOWN ARE FOR MINIMUM CMA RANGE. FOR CRIMP HEIGHTS FOR A SPECIFIC WIRE SIZE REFERENCE THE TERMINAL CUSTOMER DRAWING FOR CRIMP HEIGHT FORMULA. RECOMMENDED SET UP WIRE ONLY: FOR 600CMA #24 STANDARD + #24 MAGNET. FOR 3000CMA #16 STANDARD + #24 MAGNET.

CRIMP HEIGHTS FOR TERMINAL 62305 ONLY.

CRIMP HEIGHTS FOR TERMINAL 62304 ONLY.

APPLY 222 LOCITITE.

QTY	UNIT	PART NO	DESCRIPTION	TERMINAL
1		22317-3	ELBOW, COPPER TUBE	71
1				72
1				73
1				74
1				75
1				76
1				77
1				78
1				79
1				80
1				81
1				82
1				83
1				84
1				85
1				86
1				87
1				88
1				89
1				90
1				91
1				92
1				93
1				94
1				95
1				96
1				97
1				98
1				99
1				100
1				101
1				102
1				103
1				104
1				105
1				106
1				107
1				108
1				109
1				110
1				111
1				112
1				113
1				114
1				115
1				116
1				117
1				118
1				119
1				120
1				121
1				122
1				123
1				124
1				125
1				126
1				127
1				128
1				129

STE Tyco Electronics Corporation  
Harrisburg, PA 17105-8008

END FEED APPLICATOR, F.A.

SCALE: A1

1855691