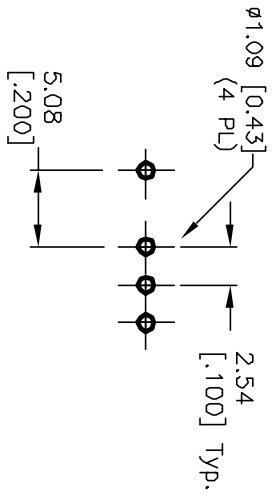
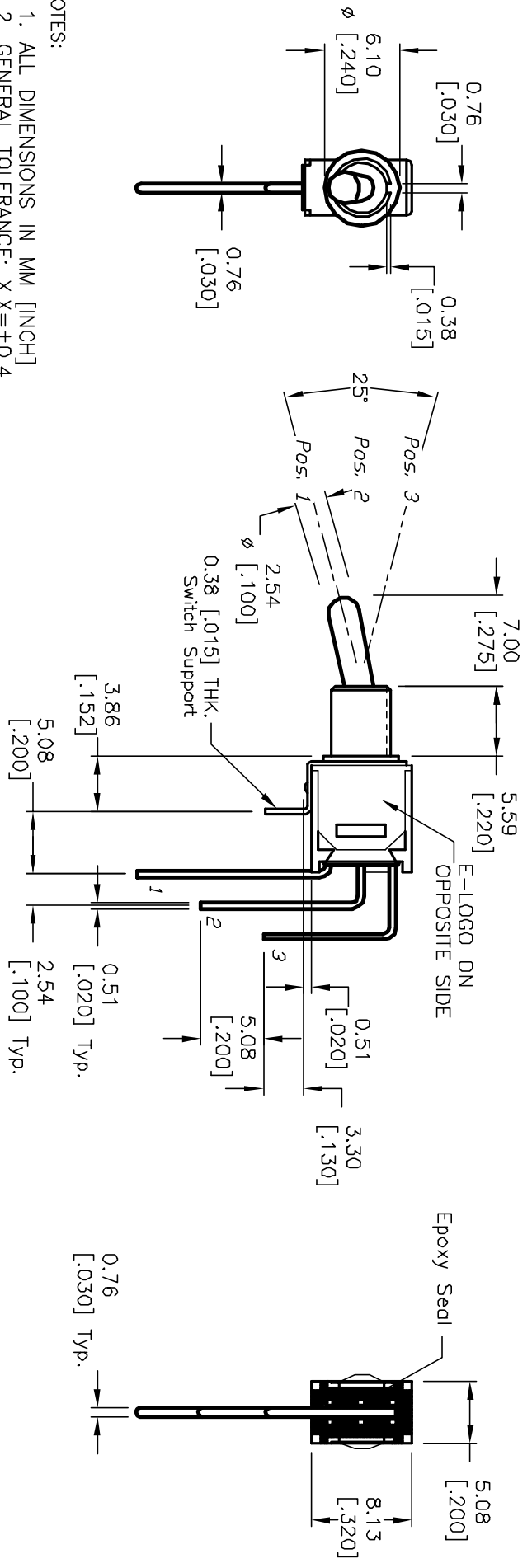


CIRCUIT: SPDT
CONTACT CONFIGURATION

SWITCH FUNCTION		
POS. 1	POS. 2	POS. 3
DN	NONE	DN
2-3	OPEN	2-1



RECOMMENDED P.C.B. LAYOUT



NOTES:

1. ALL DIMENSIONS IN MM [INCH]
2. GENERAL TOLERANCE: X.XX=±0.4 X.XX=±0.25
3. TERM. NOS. FOR REF. ONLY
4. RATING: 3A @120VAC or 28VDC; 1A @250VAC.
5. FIXED TERM. MOVING CONTACT: Copper Alloy w/Silver plating
6. ELECTRICAL LIFE: 30,000 make-and-break cycle at full load.
7. DIELECTRIC STRENGTH: 1,000 V RMS @sea level.
8. OPERATING TEMP.: -30°C to 85°C



TITLE		SCALE		DATE		DR		DWG		REV	
200 MSP-1 T3 B4 M7 Q E		2:1		5/3/02		CJB		T211029		B	
REVISED AND REDRAWN		DATE		CHK'D		SCALE		DATE		REV	
12110		5/3/02		CJB		2:1		5/3/02		B	
DESCRIPTION		DATE		CHK'D		SCALE		DATE		REV	
REV. ECN NO.		DATE		CHK'D		SCALE		DATE		REV	
THE INFORMATION CONTAINED IN THIS DOCUMENT IS PRELIMINARY. E-SWITCH AND IS NOT TO BE COPIED OR TRANSMITTED.		DATE		CHK'D		SCALE		DATE		REV	