

Bus system flat-type plug - SACCBP-M12MSD-4CON-M16/2,0-931 - 1551587

Please be informed that the data shown in this PDF Document is generated from our Online Catalog. Please find the complete data in the user's documentation. Our General Terms of Use for Downloads are valid (<http://download.phoenixcontact.com>)



Bus system flush-type plug, ETHERNET, 4-pos., M12 SPEEDCON, shielded, D-coded, rear/screw mounting with M16 thread, with 2 m bus cable, 2 x 2 x 0.2 mm²



Ethernet

Key commercial data

Packing unit	1 1
Custom tariff number	85444290
Country of origin	Germany

Classifications

eCl@ss

eCl@ss 4.0	27250313
eCl@ss 4.1	27250313
eCl@ss 5.0	27143423
eCl@ss 5.1	27143423
eCl@ss 6.0	27143423
eCl@ss 7.0	27449001
eCl@ss 8.0	27449001

ETIM

ETIM 3.0	EC002061
ETIM 4.0	EC002061
ETIM 5.0	EC002061

UNSPSC

UNSPSC 6.01	31251501
UNSPSC 7.0901	31251501

Bus system flat-type plug - SACCBP-M12MSD-4CON-M16/2,0-931 - 1551587

Classifications

UNSPSC

UNSPSC 11	31251501
UNSPSC 12.01	31251501
UNSPSC 13.2	31251501

Approvals

Approvals

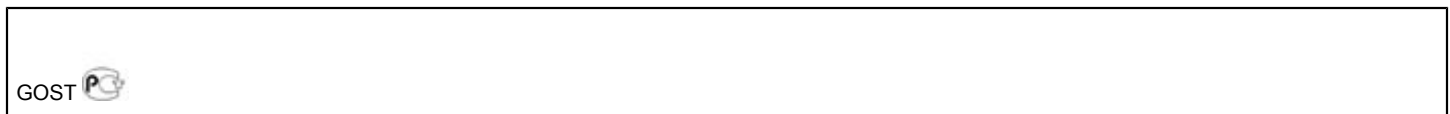
Approvals

GOST

Ex Approvals

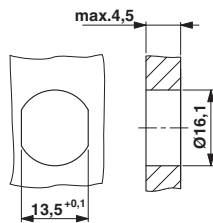
Approvals submitted

Approval details

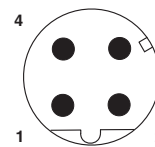


Drawings

Dimensioned drawing



Schematic diagram



Pin assignment M12 male connector, 4-pos., D-coded, male side

Housing cutout for M16 fastening thread, mounting panel with feed-through hole (alternatively with surface as protection against rotation)

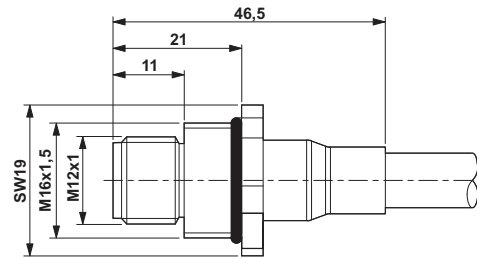
Bus system flat-type plug - SACCBP-M12MSD-4CON-M16/2,0-931 - 1551587

Cable cross section



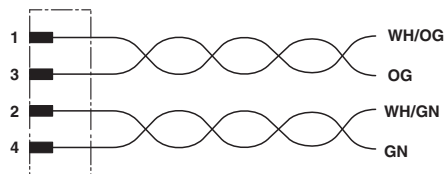
Ethernet [93E]

Dimensioned drawing



M12 flush-type plug

Circuit diagram



Contact assignment of the M12 plug