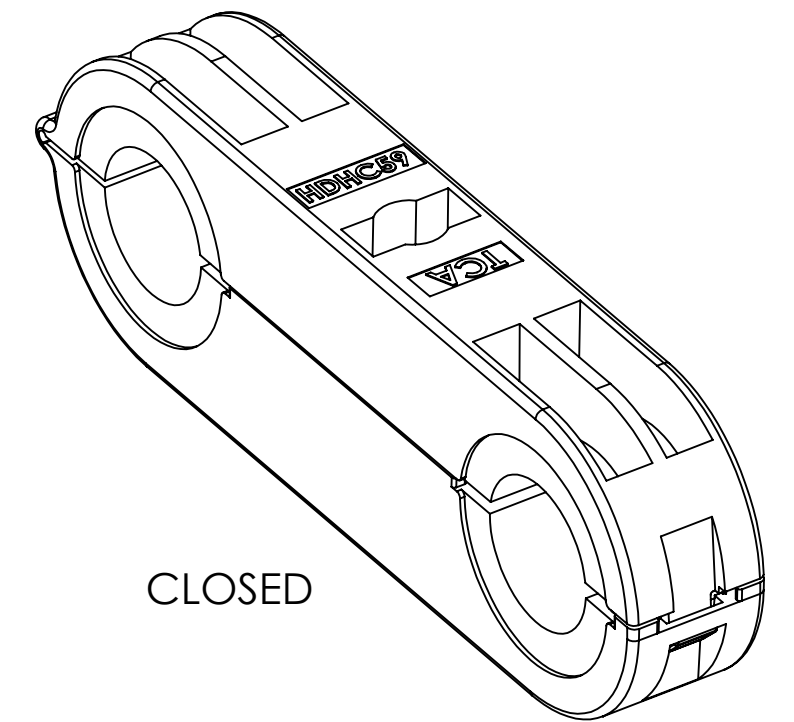
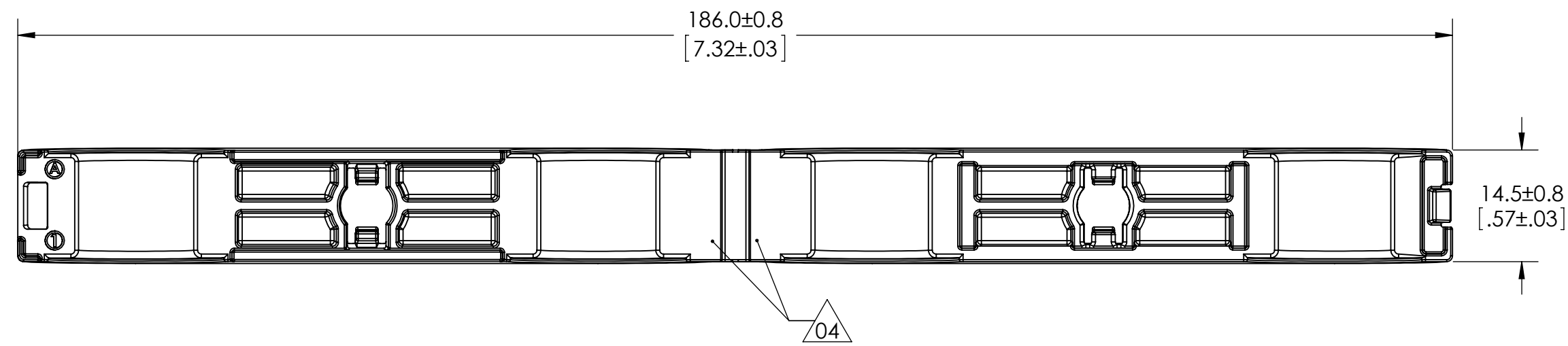
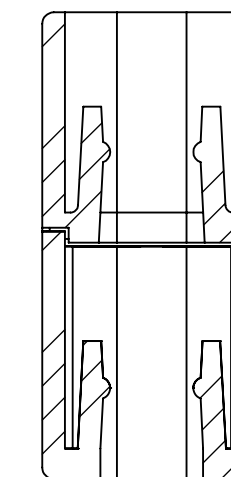
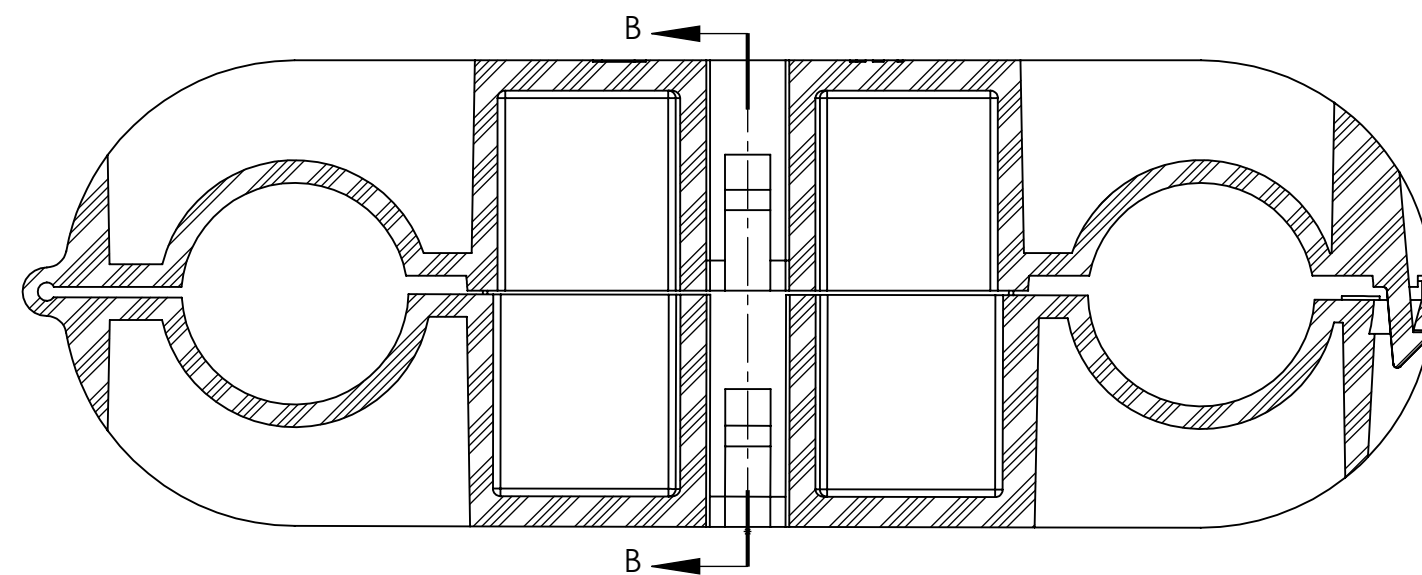
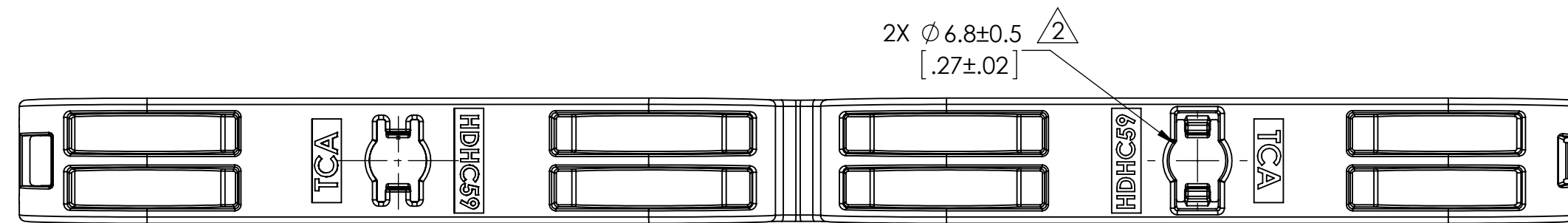
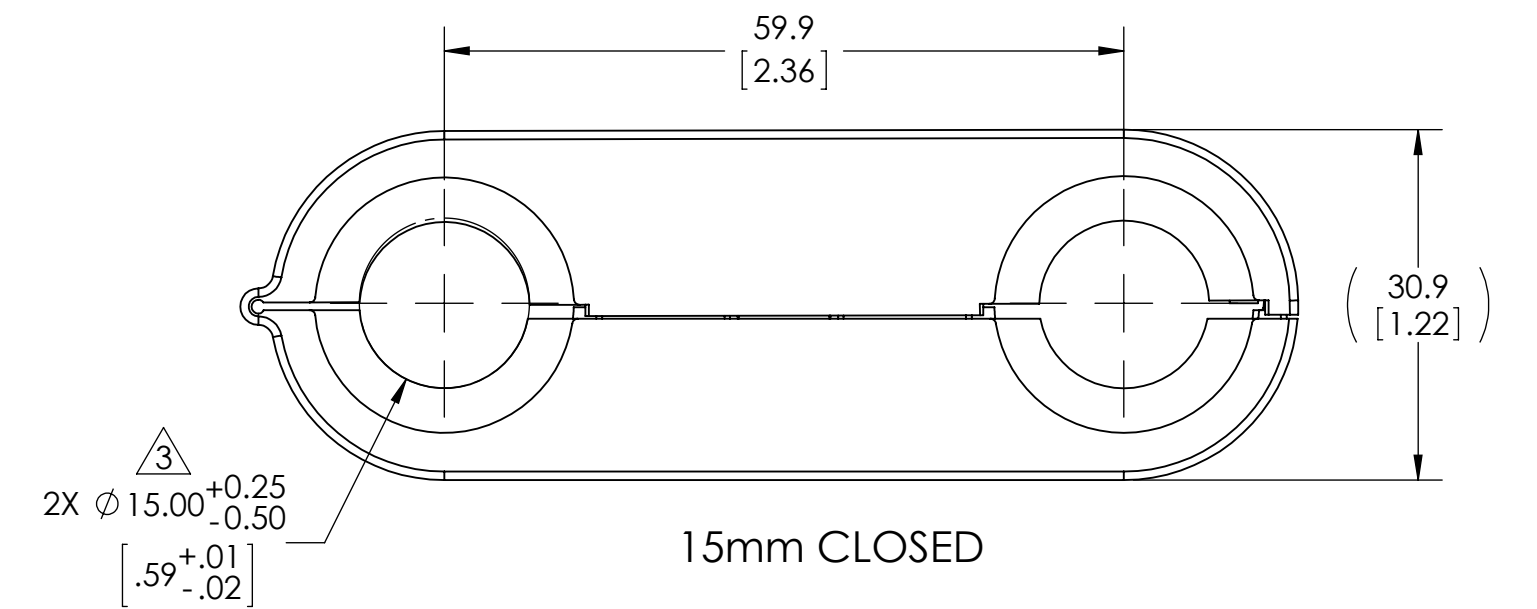
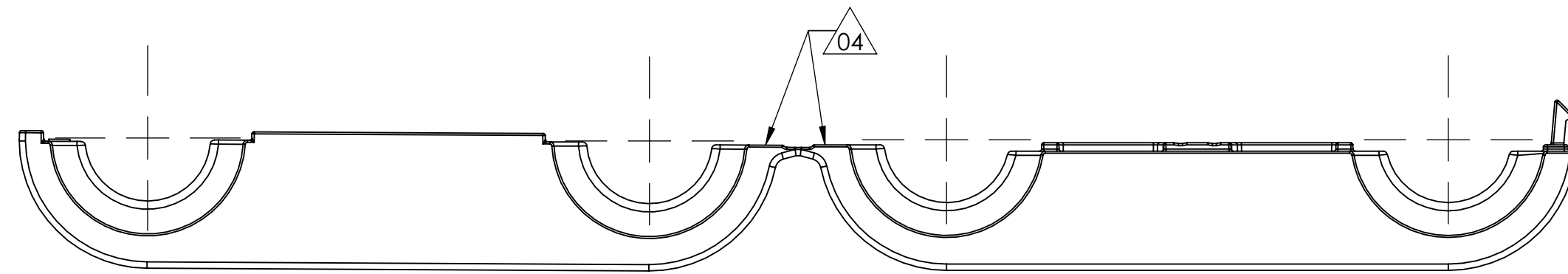


Revision level		Revision Record	Changed	Date	Approved	Date
Drawing	Part					
04	-	SEE ECN# 012511	CJR	11/27/2013	CJR	11/27/2013



CLOSED



SECTION B-B
SCALE 2 : 1

<p>Notes</p> <p>CUSTOMER REFERENCE ONLY</p> <ul style="list-style-type: none"> PA46 MATERIAL IS CAPABLE OF WITHSTANDING A CONTINUOUS TEMPERATURE OF 140 °C FOR 10,000 HRS. ACTUAL PART PERFORMANCE SHOULD BE TESTED IN APPLICATION CONDITIONS. 	<p>Material</p> <p>PA46</p>	<p>Units millimeters</p> <p>Dimension without tolerances details to:</p> <p>.xxxx = ±.0025</p> <p>.xxx = ±.013</p> <p>.xx = ±.13</p> <p>.x = ±.3</p> <p>None = ±.8</p> <p>∠ = ±0.5°</p>	<p>The copyright of this drawing is reserved by HellermannTyton. It is issued on condition that it is not reproduced, copied, or disclosed to a third party, either wholly or in part, without the consent of HellermannTyton.</p>	<p>Drawn CJR 12/11/2012</p>	<p>Article/Type-No HDHC59</p>	<p>Scale 1.5:1</p>	
				<p>Approved CJR 12/11/2012</p>	<p>Title HINGED DUAL CLAMP W/ SNAP</p>	<p>Project Number PRP12-0423</p>	
				<p>HellermannTyton</p> <p>North America</p> <p>Email: corp@htamericas.com</p> <p>Web: www.hellermann.tyton.com</p>		<p>Production : Phase</p>	<p>Format C</p>
				<p>Drawing-No 12-0423-031-CSU</p>		<p>Sheet 1/1</p>	