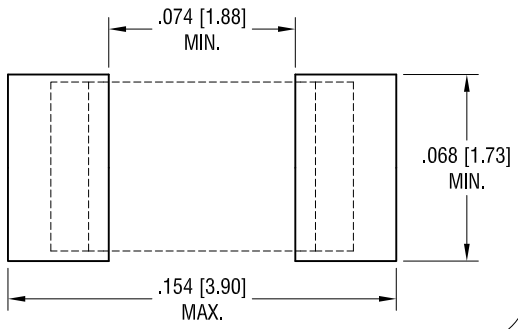
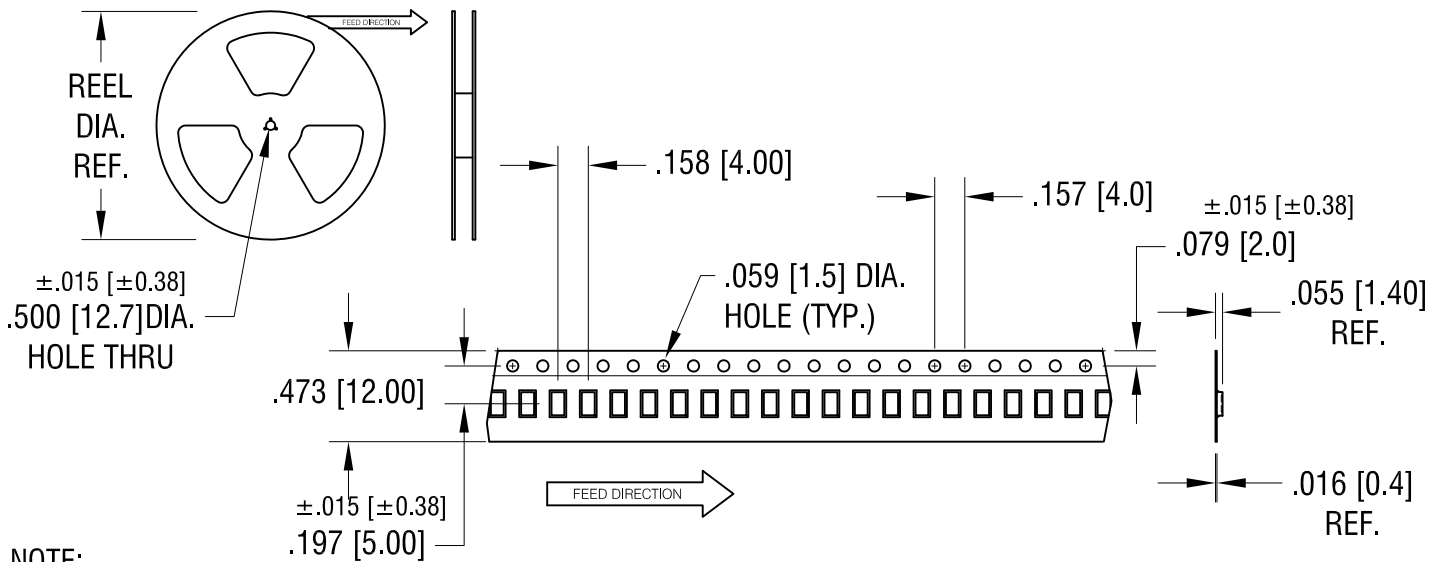
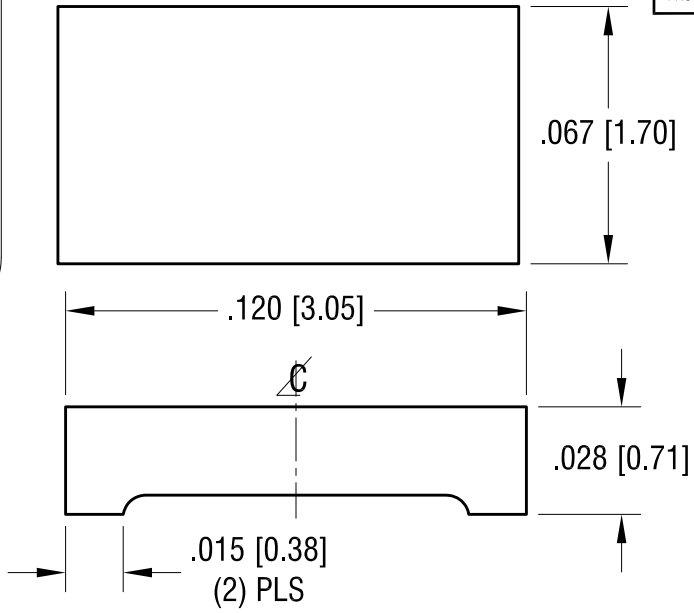


THIS DOCUMENT IS THE PROPERTY OF KEYSTONE ELECTRONICS CORP. AND SHALL NOT BE REPRODUCED, DISTRIBUTED OR USED AS A BASIS FOR MANUFACTURE WITHOUT PRIOR WRITTEN PERMISSION FROM KEYSTONE ELECTRONICS CORP.

**PC BOARD PATTERN**



**ACTUAL SIZE**



NOTE:

**TAPE AND REEL SPECIFICATIONS:**

1. TAPE:  
MAT'L - ALL CONDUCTIVE POLYSTYRENE CARRIER  
ANSI/EIA-481 STANDARD
2. REEL:  
7.00 [178.0] DIA. , 1000 PIECES PER REEL

**PART SPECIFICATIONS:**

1. MAT'L- .028 [0.70] TH'K COPPER  
FINISH: SILVER PLATE

10.01.15	CHANGE AS PER ECN 15-110	A
DATE	DESCRIPTION	REV.

<b>KEYSTONE ELECTRONICS CORP.</b>			
www.keyelco.com • ASTORIA, N.Y. 11105-2017 • Tel (718) 956-8900			
PART NAME 1206 JUMPER ON TAPE AND REEL			
MATERIAL AS NOTED			
FINISH AS NOTED		DRN BY NT	DATE 8.01.14
		APP'D LN	SCALE 1X, 20X
TOLERANCES INCH [MM]	CODE	DWG NO.	
DECIMAL ± .005 [± 0.13]	C	5108	
ANGULAR ± 1°			
UNLESS OTHERWISE SPECIFIED			