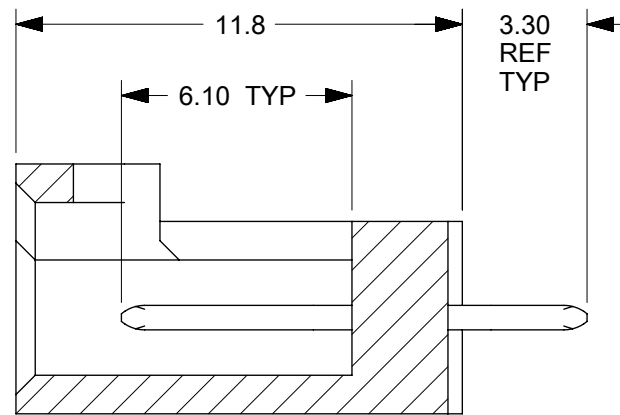
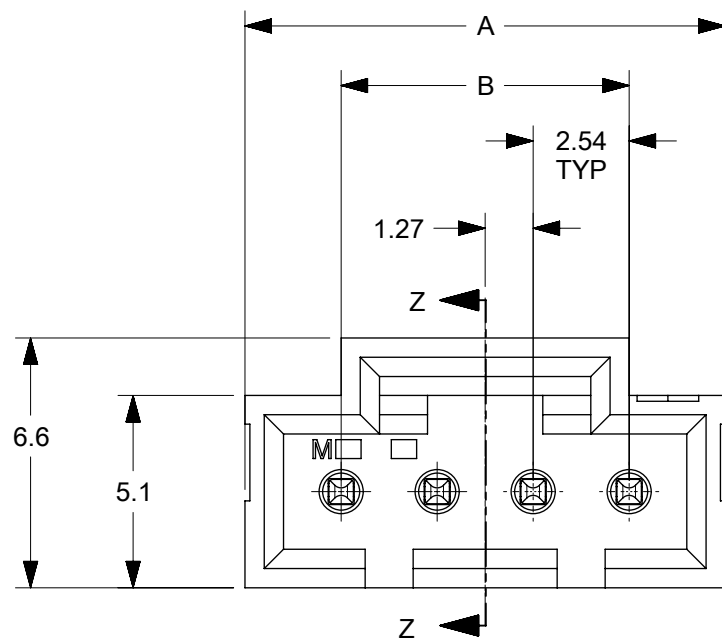


2 CIRCUIT

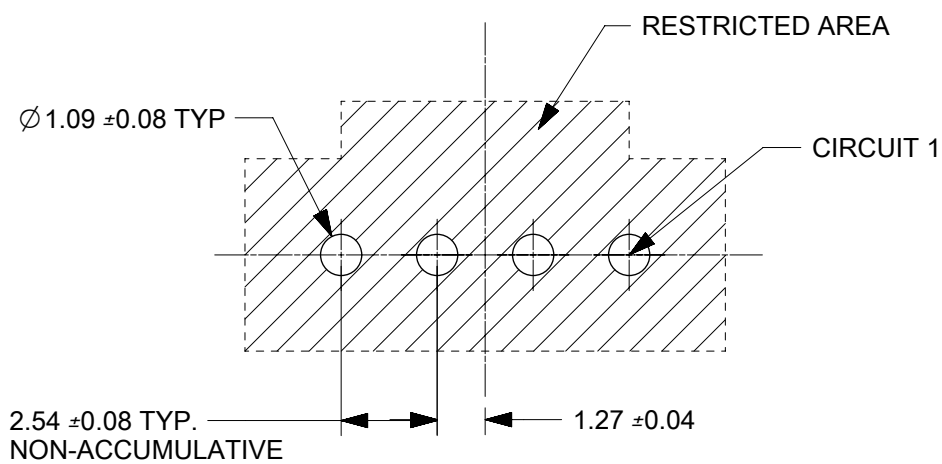
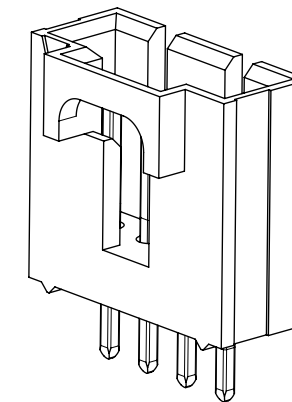
NOTES:

- HOUSING MATERIAL: (LCP) LIQUID CRYSTAL POLYMER  
UL94V-0, COLOR: BLACK  
PIN MATERIAL: BRASS
- PLATINGS:  
MATTE TIN - 2.54 MICROMETERS MINIMUM MATTE TIN OVER NICKEL  
0.38 GOLD - SELECT GOLD IN MATING AREA: 0.38 MICROMETERS MINIMUM  
SELECT MATTE TIN IN TAIL AREA: 2.0 MICROMETERS MINIMUM  
WITH OVERALL NICKEL UNDERPLATE  
0.75 GOLD - SELECT GOLD IN MATING AREA: 0.75 MICROMETERS MINIMUM  
SELECT MATTE TIN IN TAIL AREA: 2.0 MICROMETERS MINIMUM  
WITH OVERALL NICKEL UNDERPLATE
- PRODUCT SPECIFICATION: 1719710000-PS AND PS-70400
- PACKAGING SPECIFICATION: TUBES PER 1719710000-PK
- HEADER MATES WITH: OPTION "G" 70400 AND 70430  
SERIES SL CONNECTORS.
- COSMETIC SPECIFICATION: PS-45499-002 CLASS B
- SOLDERABILITY PER SMES-152 LEAD FREE ALLOY

CIRCUIT SIZE	A	B
2	7.38	2.54
3	10.08	5.08
4	12.62	7.62
5	15.16	10.16
6	17.70	12.70
7	20.24	15.24
8	22.78	17.78
9	25.32	20.32
10	27.86	22.86
11	30.40	25.40
12	32.94	27.94
13	35.48	30.48
14	38.02	33.02
15	40.56	35.56
16	43.10	38.10
17	45.64	40.64
18	48.18	43.18
19	50.72	45.72
20	53.26	48.26
21	55.80	50.80
22	58.34	53.34
23	60.88	55.88
24	63.42	58.42
25	65.96	60.96



SECTION Z-Z



RECOMMENDED PC BOARD LAYOUT  
(FOR USE WITH 1.57 THICK PC BOARD)

SYMBOLS	THIS DRAWING CONTAINS INFORMATION THAT IS PROPRIETARY TO MOLEX ELECTRONIC TECHNOLOGIES, LLC AND SHOULD NOT BE USED WITHOUT WRITTEN PERMISSION			
	DIMENSION UNITS	SCALE		
▽ = 0	mm	5:1	EC NO: 174676	
▽ = 0	GENERAL TOLERANCES (UNLESS SPECIFIED)		DRWN: KSAMIEC 2018/03/30	
▽ = 0	ANGULAR TOL ± 0.5°		CHK'D: FSMITH 2018/04/11	
▽ = 0	4 PLACES	±	APPR: FSMITH 2018/04/11	
▽ = 0	3 PLACES	±	INITIAL REVISION:	
▽ = 0	2 PLACES	± 0.25	DRWN: MKIPPER 2016/04/27	
▽ = 0	1 PLACE	± 0.36	APPR: FSMITH 2016/07/15	
▽ = 0	0 PLACES	±	DOCUMENT NUMBER	
■ = 0	DRAFT WHERE APPLICABLE MUST REMAIN WITHIN DIMENSIONS		1719710000-SD	
▽ = 0	THIRD ANGLE PROJECTION	DRAWING	SERIES	
		B-SIZE	171971	
	MATERIAL NUMBER	CUSTOMER	SHEET NUMBER	
	SEE CHART	GENERAL MARKET	1 OF 2	

PLATING	MATTE TIN	0.38 GOLD	0.75 GOLD
CIRCUIT SIZE	MATERIAL NUMBER	MATERIAL NUMBER	MATERIAL NUMBER
2	171971-0002	171971-0102	171971-0202
3	171971-0003	171971-0103	171971-0203
4	171971-0004	171971-0104	171971-0204
5	171971-0005	171971-0105	171971-0205
6	171971-0006	171971-0106	171971-0206
7	171971-0007	171971-0107	171971-0207
8	171971-0008	171971-0108	171971-0208
9	171971-0009	171971-0109	171971-0209
10	171971-0010	171971-0110	171971-0210
11	171971-0011	171971-0111	171971-0211
12	171971-0012	171971-0112	171971-0212
13	171971-0013	171971-0113	171971-0213
14	171971-0014	171971-0114	171971-0214
15	171971-0015	171971-0115	171971-0215
16	171971-0016	171971-0116	171971-0216
17	171971-0017	171971-0117	171971-0217
18	171971-0018	171971-0118	171971-0218
19	171971-0019	171971-0119	171971-0219
20	171971-0020	171971-0120	171971-0220
21	171971-0021	171971-0121	171971-0221
22	171971-0022	171971-0122	171971-0222
23	171971-0023	171971-0123	171971-0223
24	171971-0024	171971-0124	171971-0224
25	171971-0025	171971-0125	171971-0225

SYMBOLS	THIS DRAWING CONTAINS INFORMATION THAT IS PROPRIETARY TO MOLEX ELECTRONIC TECHNOLOGIES, LLC AND SHOULD NOT BE USED WITHOUT WRITTEN PERMISSION													
	DIMENSION UNITS		SCALE		CURRENT REV DESC: REV PER QUAL									
	mm		1:1		<b>molex</b> SL VERTICAL HEADER W/LATCH NO PEGS PRODUCT CUSTOMER DRAWING									
	GENERAL TOLERANCES (UNLESS SPECIFIED)										EC NO: 174676		2018/03/30	
	ANGULAR TOL ± 0.5°										DRWN: KSAMIEC		2018/04/11	
	4 PLACES ±		3 PLACES ±		CHK'D: FSMITH		2018/04/11		APPR: FSMITH					
	2 PLACES ± 0.25		1 PLACE ± 0.36		INITIAL REVISION:		2016/04/27		2016/07/15					
	0 PLACES ±		DRAFT WHERE APPLICABLE MUST REMAIN WITHIN DIMENSIONS		THIRD ANGLE PROJECTION		DRAWING		SERIES					
	171971		B-SIZE		MATERIAL NUMBER		CUSTOMER		SHEET NUMBER					
	SEE CHART		GENERAL MARKET		171971		PSD 000		C1					