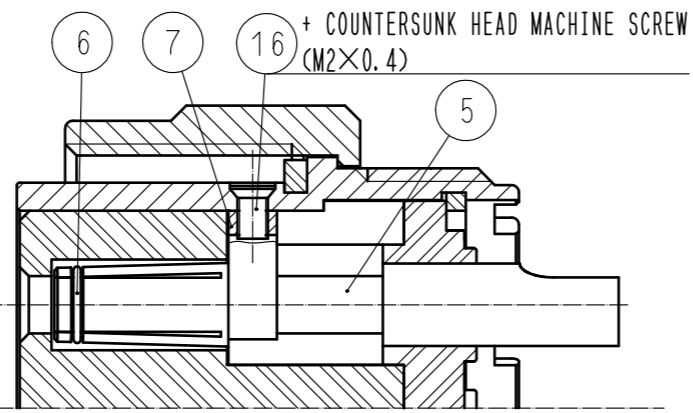
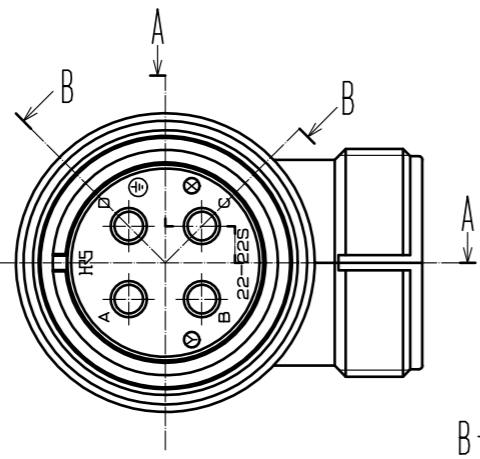
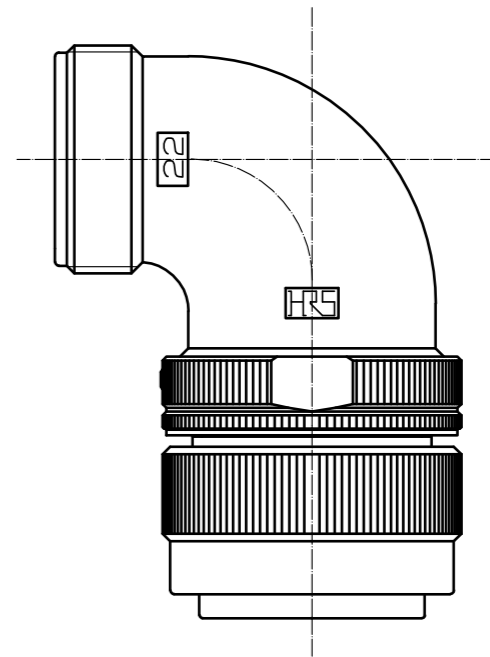
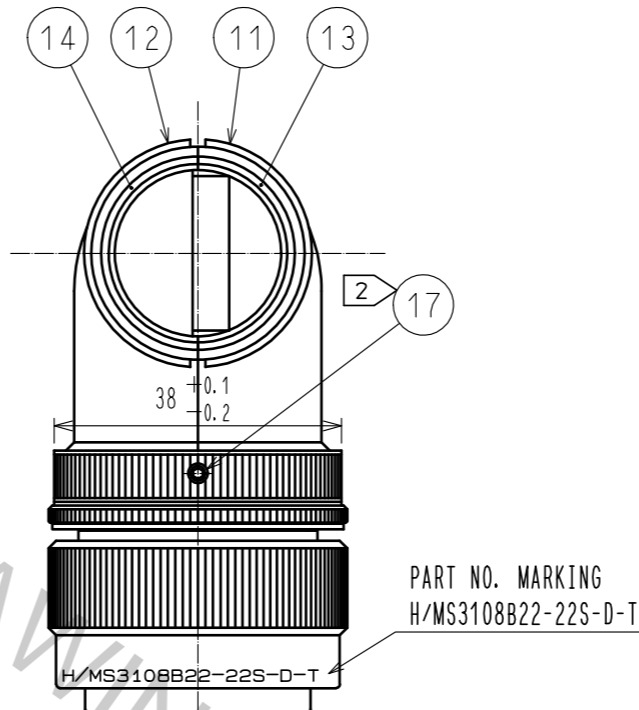
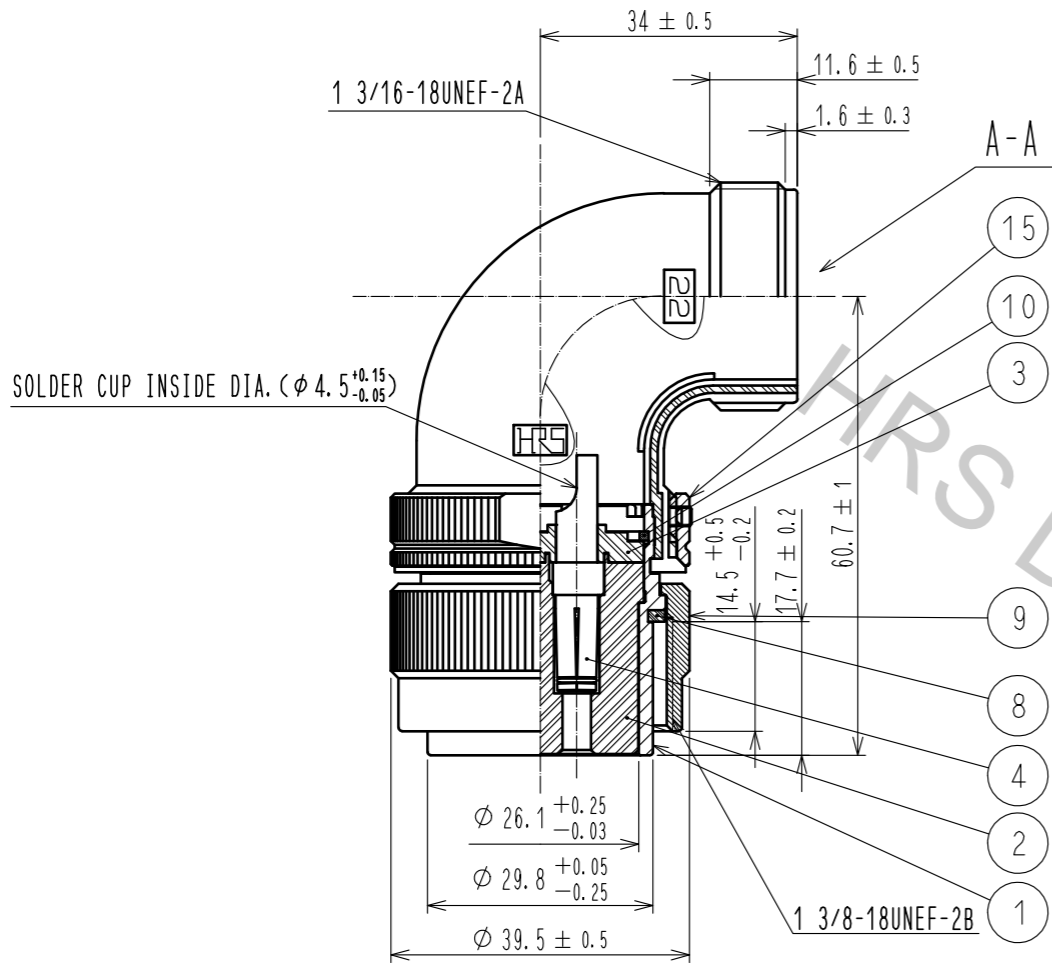


Aug.1.2018 Copyright 2018 HIROSE ELECTRIC CO., LTD. All Rights Reserved.
 In case that the application demands a high level of reliability, such as automotive,
 please contact a company representative for further information.



NOTES 1 ONE EXAMPLE OF THE ROTATION OF REF. NO. ⑨ AND REF. NO. ⑬ TO REF. NO. ① IS SHOWN.
 2 REF. NO. ⑰ : HEX SOCKET SET SCREW(HEX : 1.27)
 THE RECOMMENDED TIGHTENING TORQUE : 0.3 TO 0.4 N · m

NO.	MATERIAL	FINISH . REMARKS	NO.	MATERIAL	FINISH . REMARKS
9	ALUMINUM ALLOY	BLACK CHROMATE TREATMENT (TRIVALENT CHROMIUM)	17	STEEL	NICKEL PLATING
8	SILICONE RUBBER	(BLACK)	16	BRASS	NICKEL PLATING
7	PHOSPHOR BRONZE	SILVER PLATING	15	ALUMINUM ALLOY	BLACK CHROMATE TREATMENT (TRIVALENT CHROMIUM)
6	STAINLESS STEEL		14	ACRYLONITRILE BUTADIENE RUBBER	(BLACK)
5	PHOSPHOR BRONZE	SILVER PLATING 4 μm min.	13	ACRYLONITRILE BUTADIENE RUBBER	(BLACK)
4	PHOSPHOR BRONZE	SILVER PLATING 4 μm min.	12	ZINC ALLOY	BLACK CHROMATE TREATMENT (TRIVALENT CHROMIUM)
3	POLYPHENYLENE SULFIDE	(BLACK) UL94V-0	11	ZINC ALLOY	BLACK CHROMATE TREATMENT (TRIVALENT CHROMIUM)
2	POLYPHENYLENE SULFIDE	(BLACK) UL94V-0	10	PHOSPHOR BRONZE	NICKEL PLATING
1	ALUMINUM ALLOY	BLACK CHROMATE TREATMENT (TRIVALENT CHROMIUM)			

UNITS	SCALE	COUNT	DESCRIPTION OF REVISIONS	DESIGNED	CHECKED	DATE
mm	1 : 1	△	APPROVED : HY. KOBAYASHI 18.02.21			
			CHECKED : HY. KOBAYASHI 18.02.21			
			DESIGNED : HY. KISHI 18.02.20			
			DRAWN : MK. INOUE 18.02.06			
HIROSE ELECTRIC CO., LTD.			DRAWING NO. EDC-110235-31-00 PART NO. H/MS3108B22-22S-D-T(31) CODE NO. CL120-0423-7-31	1/1		