



Introducing Corcom RK Series Power Line Filter

The Corcom RK series filters are compact, single stage, chassis mount filters that provide significant differential mode performance ideal for industrial machinery equipment. Low input leakage current makes this series suitable for portable equipment.

KEY FEATURES

- Compact size
- High performance
- Low leakage current
- 3, 6, 10, 15 and 20A current ratings
- Rated at 250VAC
- UL Recognized, CSA Certified, and VDE Approved

APPLICATIONS

- Industrial Machinery
- Elevators & Escalators
- Exercise Equipment

PRODUCT OFFERING

1-1609036-7:	3ERK1
1-1609036-8:	6ERK1
2-1609089-5:	10ERK1
2-1609089-6:	15ERK1
2-1609089-7:	20ERK1

STANDARDS AND SPECIFICATIONS

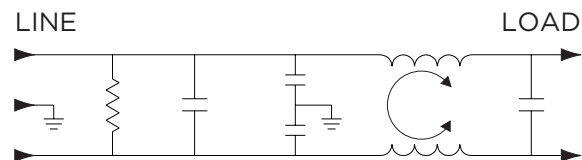


- UL Recognized
- CSA Certified
- VDE Approved

ELECTRICAL SPECIFICATIONS

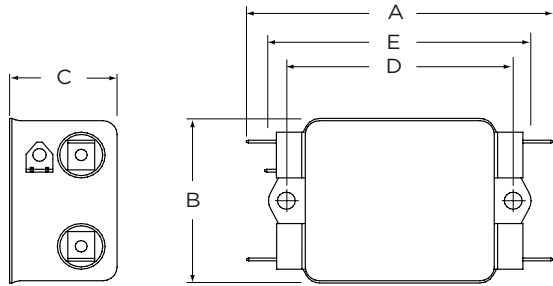
Max. Leakage current each Line to Ground:	@ 120 VAC 60 Hz:	0.16 mA
	@ 250 VAC 50 Hz:	0.26 mA
Hipot rating (one minute):	Line to Ground:	2250 VDC
	Line to Line:	1450 VDC
Rated Voltage (max):		250 VAC
Operating Frequency:		50/60 Hz
Rated Current:		3 to 20A

ELECTRICAL SCHEMATIC

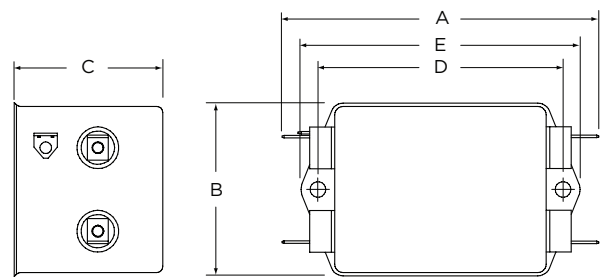


CASE STYLES

3 & 6A



10, 15 & 20A



Typical Dimensions:
 Line/Load Terminals (6): .250 [6.3] with .07 [1.8] Dia. hole
 Ground Terminal (1): .250 [6.3] with .07 x .16 [1.8 x 3.8] slot
 Mounting Holes (2): .188 [4.78] Dia.

CASE DIMENSIONS

Part Number	A (max)	B (max)	C (max)	D ±.015 ±.38	E (max)
3ERK1	3.35	1.82	1.16	2.38	2.78
	85.09	46.23	29.46	60.45	70.61
6ERK1	3.35	1.82	1.28	2.38	2.78
	85.09	46.23	32.51	60.45	70.61
10ERK1, 15ERK1 & 20ERK1	3.85	2.07	1.78	2.94	3.35
	97.79	52.58	45.21	74.67	85.09

PERFORMANCE DATA

Minimum Insertion Loss - Measured in closed 50 Ohm system

Common Mode / Asymmetrical (Line to Ground)

Current Rating	Frequency – MHz									
	.05	.10	.15	.5	1	2	5	10	20	30
3A	21	27	30	43	49	50	50	48	50	49
6A	19	29	29	.7	43	44	48	46	50	48
10A	20	27	31	45	45	44	46	47	53	44
15A	21	28	31	45	43	41	42	42	47	57
20A	19	25	29	34	36	38	40	41	43	52

Common Mode / Asymmetrical (Line to Ground)

Current Rating	Frequency – MHz									
	.05	.10	.15	.5	1	2	5	10	20	30
3A	9	20	35	67	78	78	72	66	61	60
6A	14	14	13	59	74	80	72	68	61	60
10A	14	12	30	65	80	84	78	70	60	50
15A	15	13	20	61	76	88	70	72	64	50
20A	16	19	16	54	74	90	74	67	61	54

