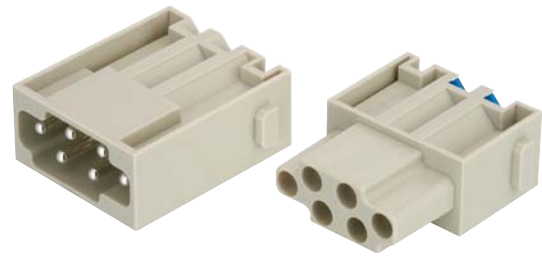

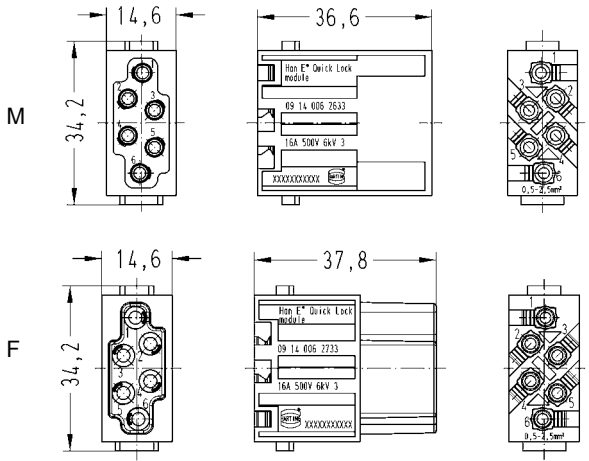
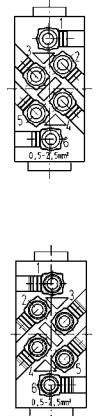


Number of contacts

8



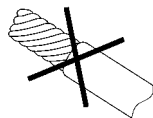
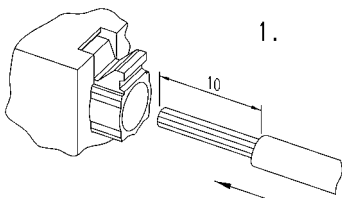
Identification	Part number		Drawing	Dimensions in mm
	Male insert (M)	Female insert (F)		
<p>Quick Lock termination</p> 	09 14 006 26 33	09 14 006 27 33		<p>Contact arrangement view from termination side</p> 

Assembly manual

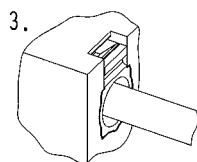
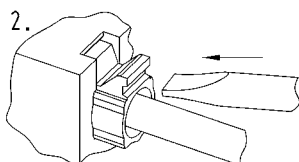
Removal manual

Remove cable jacket and strip the fine stranded wires

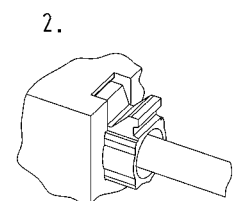
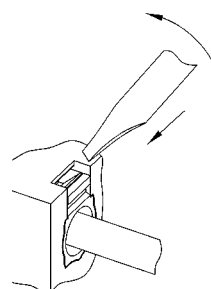
Do not twist the fine stranded wires!



Push fine stranded wires into the Han-Quick Lock® contact and push the blue slide with a screw driver<sup>1)</sup> until it comes to a stop



Please insert the screw driver<sup>1)</sup> at an angle of 45° into the opening and lever the black side out



<sup>1)</sup> Screw driver: 0.4 x 2.5 mm

## Features

- Innovative Han-Quick Lock® termination technology
- Field assembly without special tools
- Compatible to Han® E module with crimp terminal
- Reduced wiring times

## Technical characteristics

Specifications	DIN EN 60 664-1 DIN EN 61 984
----------------	----------------------------------

### Inserts

Number of contacts	6
Electrical data acc. to EN 61 984	<b>16 A 500 V 6 kV 3</b>
Rated current	16 A
Rated voltage	500 V
Rated impulse voltage	6 kV
Pollution degree	3

Insulation resistance	≥ 10 <sup>10</sup> Ω
Material	polycarbonate
Limiting temperatures	-40 °C ... +125 °C
Flammability acc. to UL 94	V 0
Mechanical working life - mating cycles	≥ 500

### Contacts

Material	copper alloy
Surface	
- hard-silver plated	3 μm Ag
- hart gold plated	2 μm Au over 3 μm Ag Ni
Contact resistance	≤ 1 mΩ
Quick Lock termination	
- mm <sup>2</sup>	0.5 ... 2.5 mm <sup>2</sup>
- AWG	20 ... 14