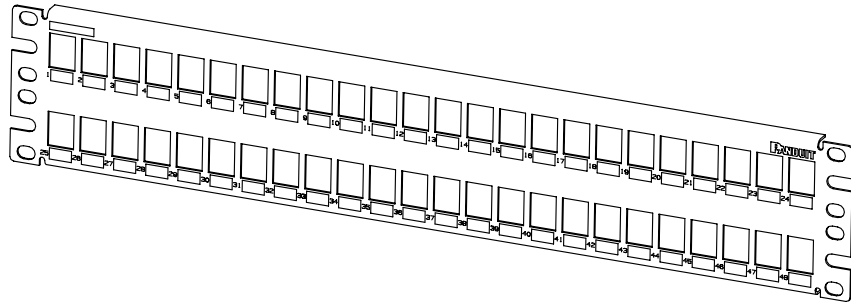


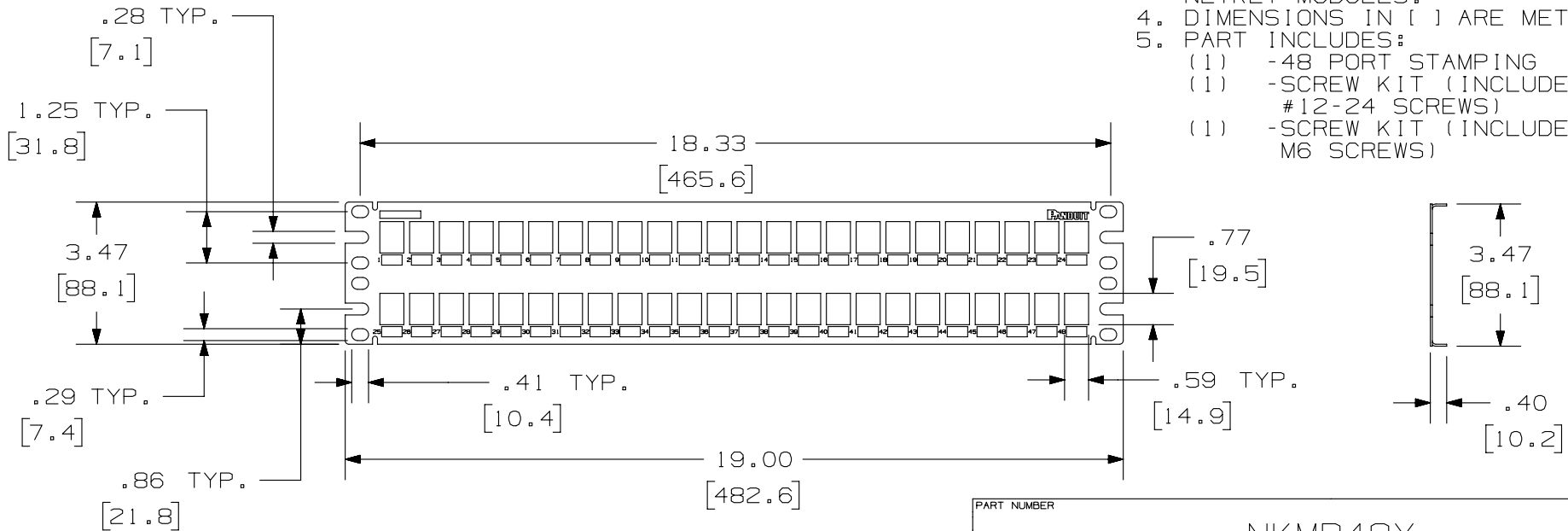
THIS COPY IS PROVIDED ON A RESTRICTED BASIS AND IS NOT TO BE USED IN ANY WAY DETRIMENTAL TO THE INTERESTS OF PANDUIT CORP.

PANDUIT P/N	WEIGHT
NKMP48Y	6.51 LB/10 PCS (2960 g/10 PCS)



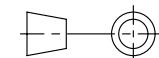
NOTES:

- SEE CURRENT CATALOG FOR VARIOUS APPLICATIONS WITH THIS WIRING SYSTEM.
- PATCH PANEL IS DESIGNED FOR MOUNTING TO 19" STANDARD EIA RACKS.
- PATCH PANELS ACCEPT ALL NETKEY MODULES.
- DIMENSIONS IN [] ARE METRIC.
- PART INCLUDES:
 - (1) -48 PORT STAMPING
 - (1) -SCREW KIT (INCLUDES FOUR #12-24 SCREWS)
 - (1) -SCREW KIT (INCLUDES FOUR M6 SCREWS)



PART NUMBER		NKMP48Y	
TITLE			
NETKEY 48 PORT ALL METAL MODULAR PATCH PANEL			
CUSTOMER DRAWING			
ITEM REVISION NAME		M02479HS/01	
DATASET FILE NAME		M02479HS_DC203/00B	
UNLESS OTHERWISE SPECIFIED, DIMENSIONAL TOLERANCES ARE: IN [mm]		MATERIAL:	
.x ± .xx ± .03 [.8]		16AWG C.R.S.	
.xxx ± .010 [.3]		DRAWING NUMBER:	
ANGLES ±		02479-203	
THIRD ANGLE PROJECTION		SHT 1 OF 1	
DRAWN BY	DATE	CHK	SCALE
JSP	3-11-06	MJD	NONE
REV	DATE	BY	CHK
1	5/15/14	JSP	REFR
R	3-11-06	JSP	MJD

REV	DATE	BY	CHK	APR	DESCRIPTION	ECN
1	5/15/14	JSP	REFR	MMR	A. REVISED DRAWING TITLE BLOCK.	02479-203
R	3-11-06	JSP	MJD	MJD	RELEASED TO PRODUCTION	02479-203



D10100DA/14