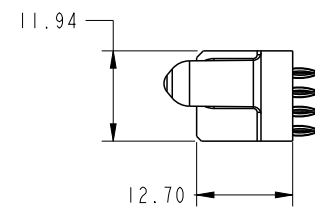
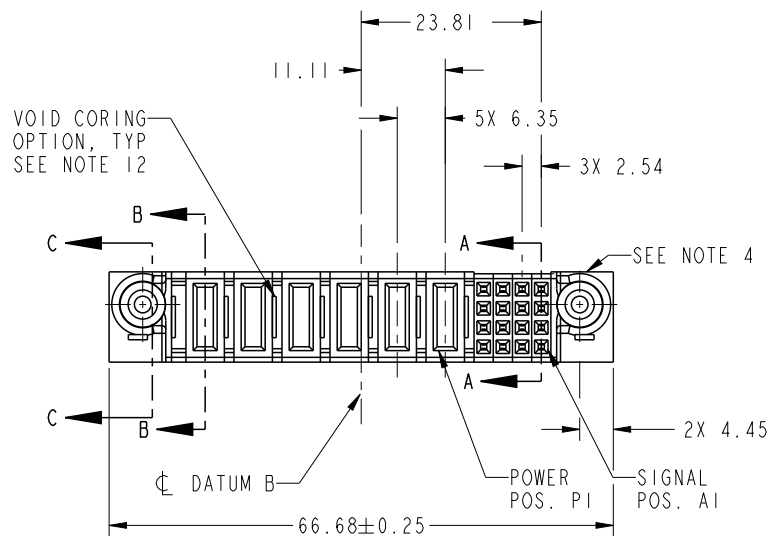


PRODUCT NO. 51940-401-- NOTE: 3	ROWS D C B A	POWER						SIGNAL				E1	
		E2	P6	P5	P4	P3	P2	P1	4	3	2		1
			PF	X	PF	X	PC	X	F	F	F	F	
									F	F	F	F	
									F	F	F	F	
									F	F	F	F	

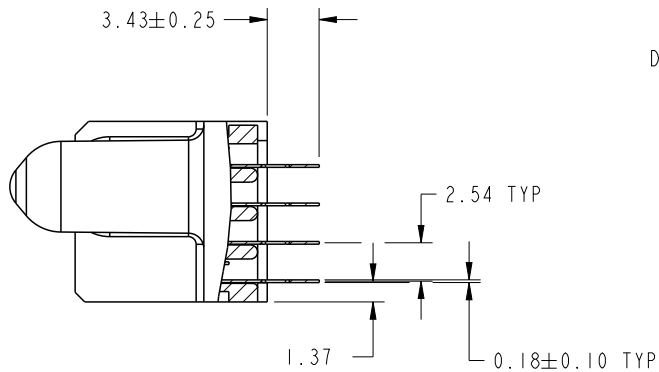


CODE	DIM "M" MATING LENGTH	CONTACT TYPE
PF	[2.34]	POWER
F	[N/A]	SIGNAL
PC	[1.07]	POWER
X	OMITTED	OMITTED

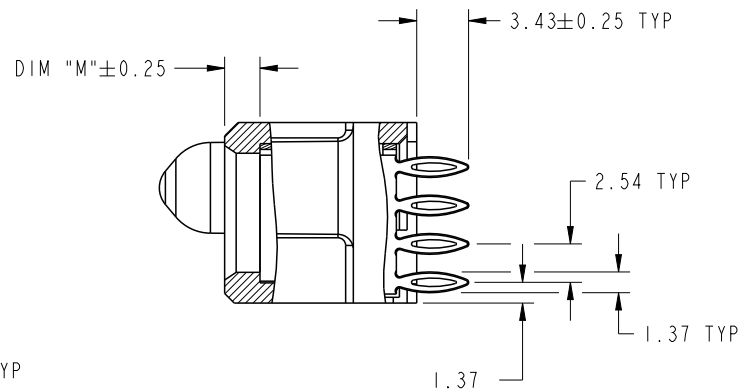
spec ref	*	dr	X Q Wang	2011/08/31	projection 	MM ←→	size	A4	scale	1:1
tolerance std	TOLERANCES UNLESS OTHERWISE SPECIFIED	eng	X Q Wang	2011/10/09			ecn no	-		
SEE NOTE		chr	-	-						
surface	✓	appr	Pei-Ming Zheng	2011/10/10	product family	PwrBlade	rel level	Released		
linear	0.X	±0.5		title	16 S + 6 P		dwg no	51940-401		rev
	0.XX	±0.25								
	0.XXX	±0.1								
angular	0°	±2°	www.fci.com	cat. no.	*	Product - Customer Drw	sheet 1 of 4			

PRODUCT NUMBER

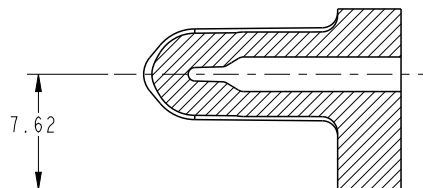
51940-401--  
NOTE: 3



SECTION A-A  
SCALE 2:1



SECTION B-B  
SCALE 2:1

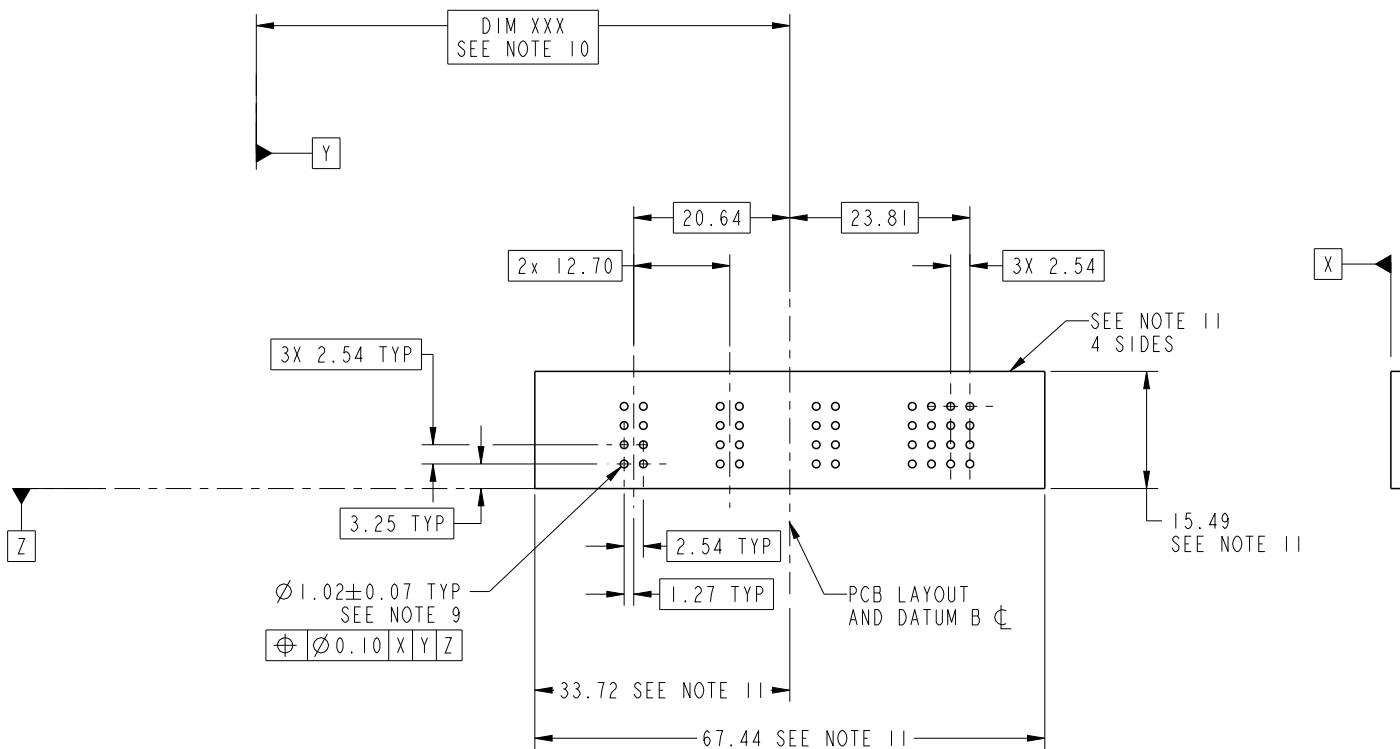


SECTION C-C  
SCALE 2:1

spec ref *		dr X Q Wang 2011/08/31		projection 	MM 	size A4	scale 1:1
tolerance std SEE NOTE		eng X Q Wang 2011/10/09				ecn no -	
TOLERANCES UNLESS OTHERWISE SPECIFIED		chr -				rel level Released	
appr Pei-Ming Zheng 2011/10/10		product family PwrBlade		rev A		51940-401	
surface	linear	0.X	±0.5		title 16 S + 6 P VERTICAL PRESS-FIT RECEPT	www.fci.com	cat. no. *
		0.XX	±0.25				
		0.XXX	±0.1				
angular	0°	±2°	Product - Customer Drw		sheet 2 of 4		

PRODUCT NUMBER

51940-401--  
NOTE: 3



RECOMMENDED PCB LAYOUT

spec ref	*	dr	X Q Wang	2011/08/31	projection	MM ←→	size	A4	scale	1:1	
tolerance std	TOLERANCES UNLESS OTHERWISE SPECIFIED	eng	X Q Wang	2011/10/09			ecn no	-			
SEE NOTE		chr	-	-				product family	PwrBlade	rel level	Released
surface		appr	Pei-Ming Zheng	2011/10/10	title		16 S + 6 P		www.fci.com cat. no. *	Product - Customer Drw sheet 3 of 4	
linear		0.X	±0.5		title VERTICAL PRESS-FIT RECEPT	dwg no 51940-401	rev A				
angular	0°	±2°	www.fci.com					PDS: Rev :A	STATUS:Released	Printed: Oct 10, 2011	



1

2

3

4

PRODUCT NUMBER

51940-401--  
NOTE: 3

NOTES:

1. DIMENSIONS AND TOLERANCES ARE IN ACCORDANCE WITH ASME Y14.5M, 1994 UNLESS OTHERWISE SPECIFIED.

CONNECTOR NOTES:

- ② HOUSING MATERIAL: UL 94 V-0 GLASS FILLED HIGH-TEMP THERMOPLASTIC  
POWER CONTACT MATERIAL: COPPER ALLOY  
SIGNAL PIN MATERIAL: COPPER ALLOY
- 3. SEE ITEM 7 & 8 IN PRINT 10064183 FOR PLATING SPEC OF 51940-401 AND 51940-401LF RESPECTIVELY.
- ④ MANUFACTURER'S NAME, DATE CODE AND OPTIONAL P/N TO APPEAR ON THIS SURFACE. THE P/N CAN BE OMITTED IF THERE IS NOT ENOUGH SPACE ON THIS SURFACE.
- 5. PRODUCT SPECIFICATION GS-12-149.  
APPLICATION SPECIFICATION BUS-20-067.
- 6. PACKAGED IN TRAYS.
- PCB NOTES:
- 7. ALL HOLE DIAMETERS ARE FINISHED HOLE SIZE.
- ⑧ MOUNTING HOLES, WHERE APPLICABLE, ARE UNPLATED.
- ⑨  $\varnothing 1.151 \pm 0.025$  DRILLED HOLES PLATED WITH  
0.008 MIN SnPb OR Sn OVER 0.03  
TO 0.08 Cu PLATING TO ACHIEVE  
 $\varnothing 1.02 \pm 0.07$  HOLE.
- ⑩ "DIM XXX" TO BE DETERMINED BY THE CUSTOMER.
- ⑪ CONNECTOR KEEP-OUT ZONE.
- 12. THE VOID CORING IN BETWEEN POWER MODULES, SIGNAL MODULES AND END MODULES ARE OPTIONAL AND THE SHAPE MAY BE DIFFERENT FOR OPTIMIZE THE MOLDING PROCESS. THE VOID CORING WILL NOT EFFECT TO PRODUCT FUNCTION.

A

B

C

D

A

B

C

D



Copyright FCI.

spec ref *		dr	X Q Wang	2011/08/31	projection 	MM 	size	A4	scale	1:1
tolerance std SEE NOTE	TOLERANCES UNLESS OTHERWISE SPECIFIED	eng	X Q Wang	2011/10/09			ecn no	-		
		chr	-	-						
surface <input checked="" type="checkbox"/>		linear	appr	Pei-Ming Zheng	2011/10/10	product family	PwrBlade	rel level	Released	
	0.X		$\pm 0.5$		title	16 S + 6 P	dwg no	51940-401	rev	A
	0.XX	$\pm 0.25$								
0.XXX	$\pm 0.1$									
angular	0°	$\pm 2°$	www.fci.com	cat. no.	*	Product - Customer Drw	sheet 4 of 4			

2

3

4