

4

3

2

1

THIS DRAWING IS UNPUBLISHED.
VERTRAULICHE UNVERÖFFENTLICHTE ZEICHNUNG

RELEASED FOR PUBLICATION
FREI FUER VERÖFFENTLICHUNG

MATED WITH:
PASSEND ZU:
1110949

LOC
AI

DIST

REVISIONS
ÄNDERUNGEN

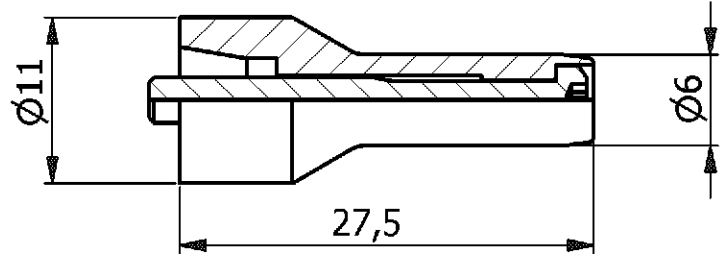
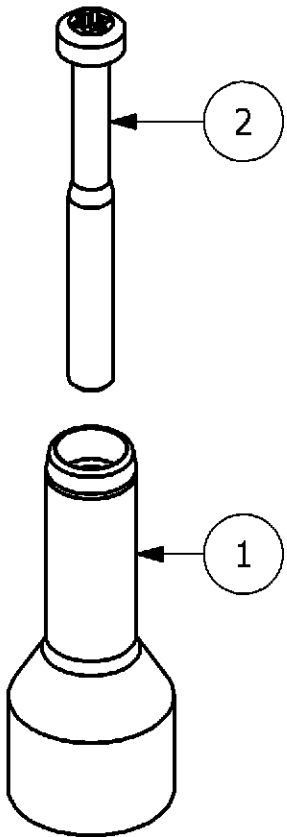
© COPYRIGHT 2000 BY AMP INCORPORATED.

ALL RIGHTS RESERVED.
ALLE RECHTE VORBEHALTEN

PROJEKT NR.:
B901815

P LTR DESCRIPTION BESCHREIBUNG
C3 REVISED BY ECR-07-016077

DATE DWN APVD
04.07.2007 GW BR



0-1 as shown

NOTES

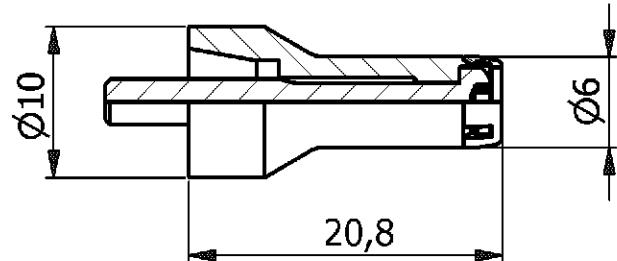
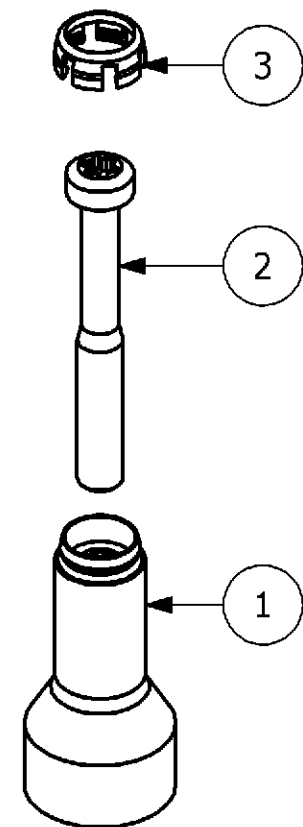
- 1 SUITABLE CRIMP BARRELS: SERIES HF.06/08
CUSTOMER DRAWING: 1110952, 1108807
- 2 SUITABLE INSERTS: SERIES MDL; MDL2
CUSTOMER DRAWING: 1103024, 1104560, 1110957
- 3 STANDARDS:
DIN EN 61984; DIN EN 60664-1
- 4 PACKAGING:
10 SETS IN A CARTON, PRE-MOUNTED

QTY.	DESCRIPTION	MATERIAL	SURFACE	COLOR	NOTE	ITEM
1	PIN CONTACT	BRASS	SILVER PLATED	---	LONG VERSION	1
1	SCREW	STAINL.STEEL	---	---	M3X27, SELFLOCKING	2

PN: 0-1 / Ordering Text: HF-06-Sti

NOTES

- 1 SUITABLE CRIMP BARRELS: SERIES HF.06/08
CUSTOMER DRAWING NO.: 1110952, 1108807
- 2 SUITABLE INSERTS: SERIES HVS; HC.20
CUSTOMER DRAWING: 1103243, 1245442
- 3 STANDARDS:
DIN EN 61984; DIN EN 60664-1
- 4 PACKAGING:
10 SETS IN A CARTON, PRE-MOUNTED



0-2 as shown

QTY.	DESCRIPTION	MATERIAL	SURFACE	COLOR	NOTE	ITEM
1	IP20-PROTECTION	PA6.6-GF25	NATURAL	BLACK	FOR PIN CONTACT	3
1	SCREW	STAINL.STEEL	---	---	M3X23,5, SELFLOCKING	2
1	PIN CONTACT	BRASS	SILVER PLATED	---	SHORT VERSION	1

PN: 0-2 / Ordering Text: HF-06-Sti-IP20

<small>THIS DRAWING IS A CONTROLLED DOCUMENT FOR AMP INCORPORATED. IT IS SUBJECT TO CHANGE AND THE CONTROLLING ENGINEERING ORGANIZATION SHOULD BE CONTACTED FOR THE LATEST REVISION. DIESES ZEICHNUNGSDOKUMENT WIRD DURCH AMP INCORPORATED KONTROLLIERT. ÄNDERUNGEN, DIE DEM TECHNISCHEN FORTSCHRITT DIENEN, SIND VORBEHALTEN. DEN JEWELN LETZTLIEGENDEN ÄNDERUNGSSTAND ERFAHREN SIE AUF ANFRAGE.</small>		DWN 09.08.2005 G.WROBLEWSKI	Tyco / Electronics AMP GmbH D - 53819 Neunkirchen
<small>DIMENSIONS: DIMENSIONEN: mm</small>		CHK 09.08.2005 H.BRAUN	
<small>TOLERANCES UNLESS OTHERWISE SPECIFIED: ALLGEMEINTOLERANZEN</small>		APVD 09.08.2005 T.SCHNURPFEIL	ASS'Y PIN CONTACT SERIES HF6
<small>n. ISO 8015 n. ISO 2768 - mH -E n. DIN 16901 - 140</small>		PRODUCT SPEC PRODUKTSPEZ. 108-74024	
<small>ANGLES/WINKEL #</small>		APPLICATION SPEC VERARBEITUNGSSPEZ. 114-74031	NAME
<small>MATERIAL</small>		WEIGHT GEWICHT	SIZE A3
<small>FINISH / OBERFLÄCHE / FARBE</small>		CAGE CODE 00779	
<small>FINISH / OBERFLÄCHE / FARBE</small>		DRAWING NO ZEICHNUNGS-NR. 1110948	
<small>FINISH / OBERFLÄCHE / FARBE</small>		RESTRICTED TO NUR FUER -	
<small>FINISH / OBERFLÄCHE / FARBE</small>		CUSTOMER DRAWING / KUNDENZEICHNUNG	
<small>FINISH / OBERFLÄCHE / FARBE</small>		SCALE MASSSTAB 2:1	SHEET BLATT 1 OF VON 1
<small>FINISH / OBERFLÄCHE / FARBE</small>		REV C3	