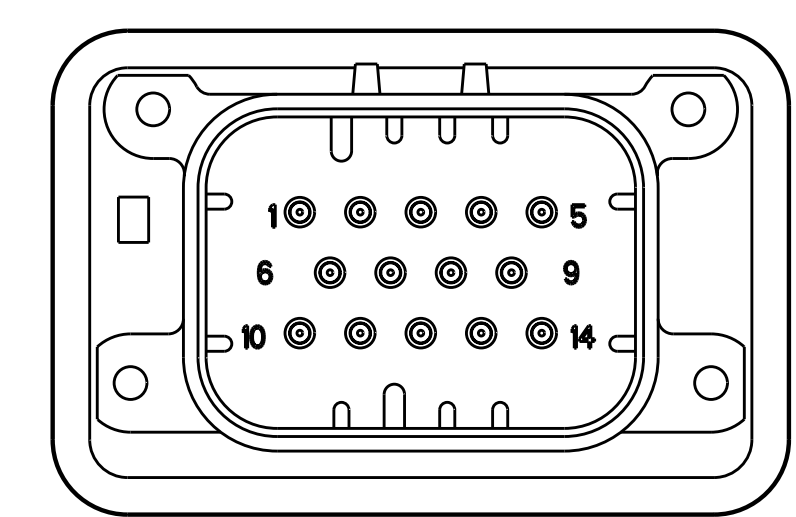
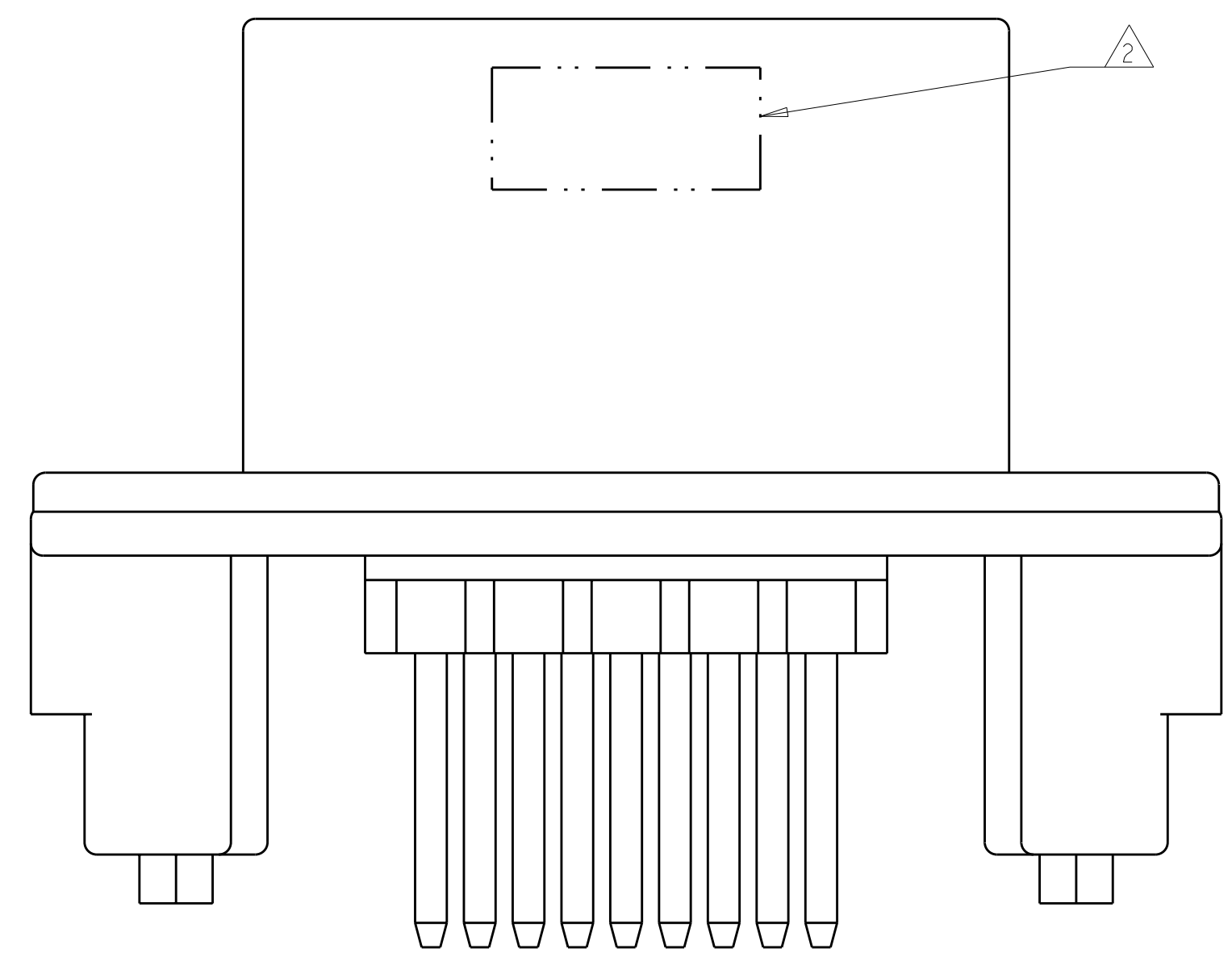
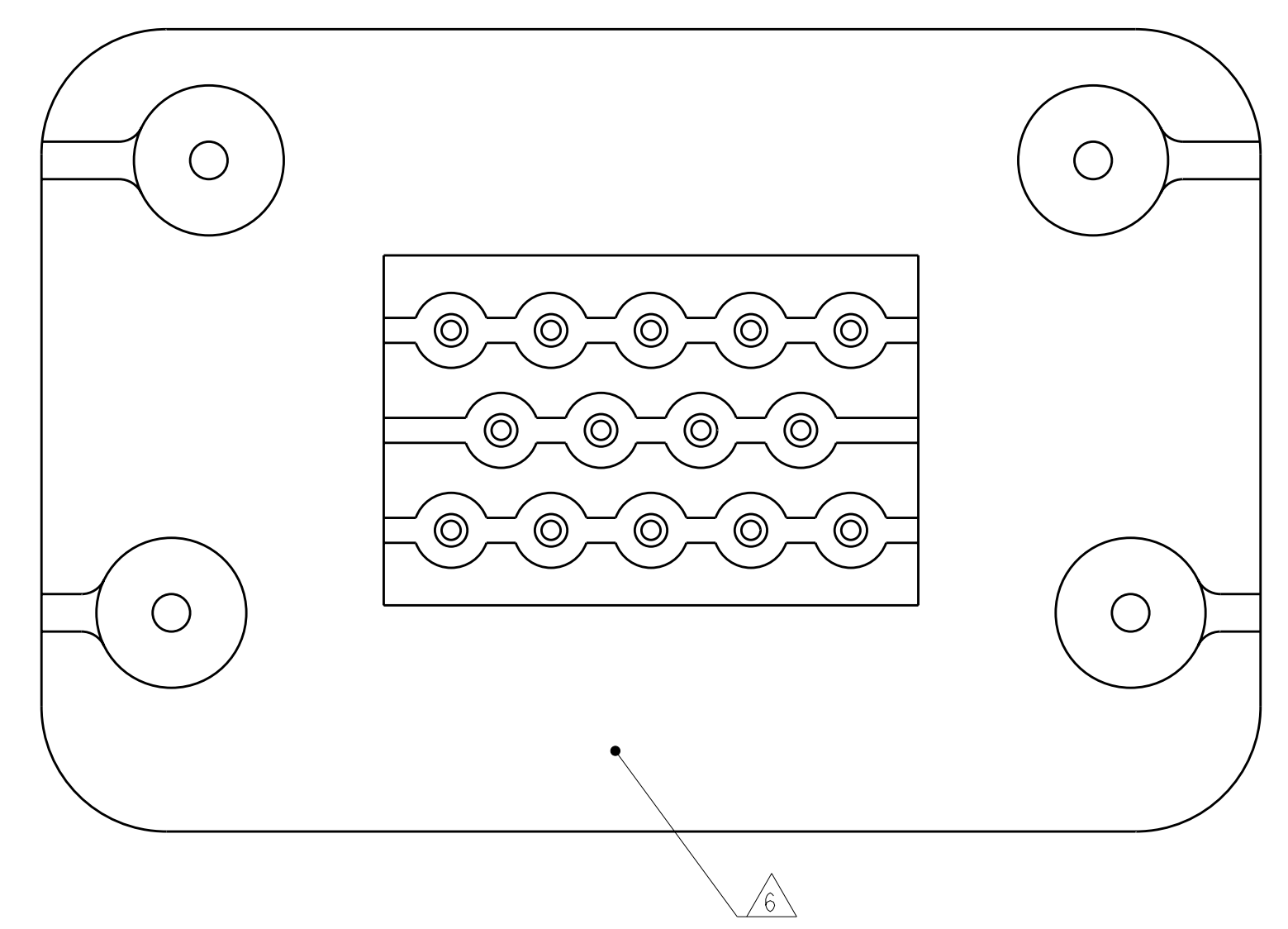
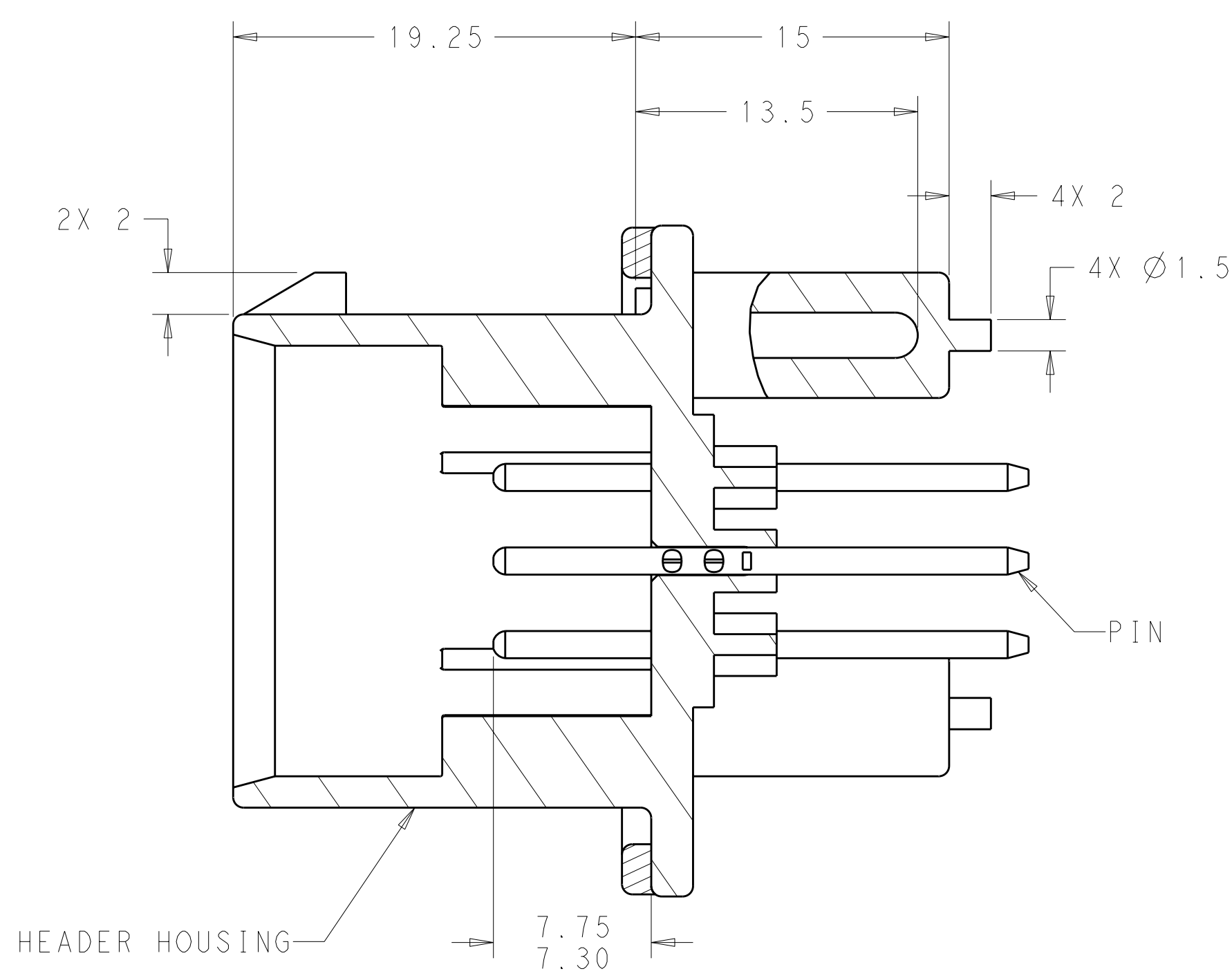
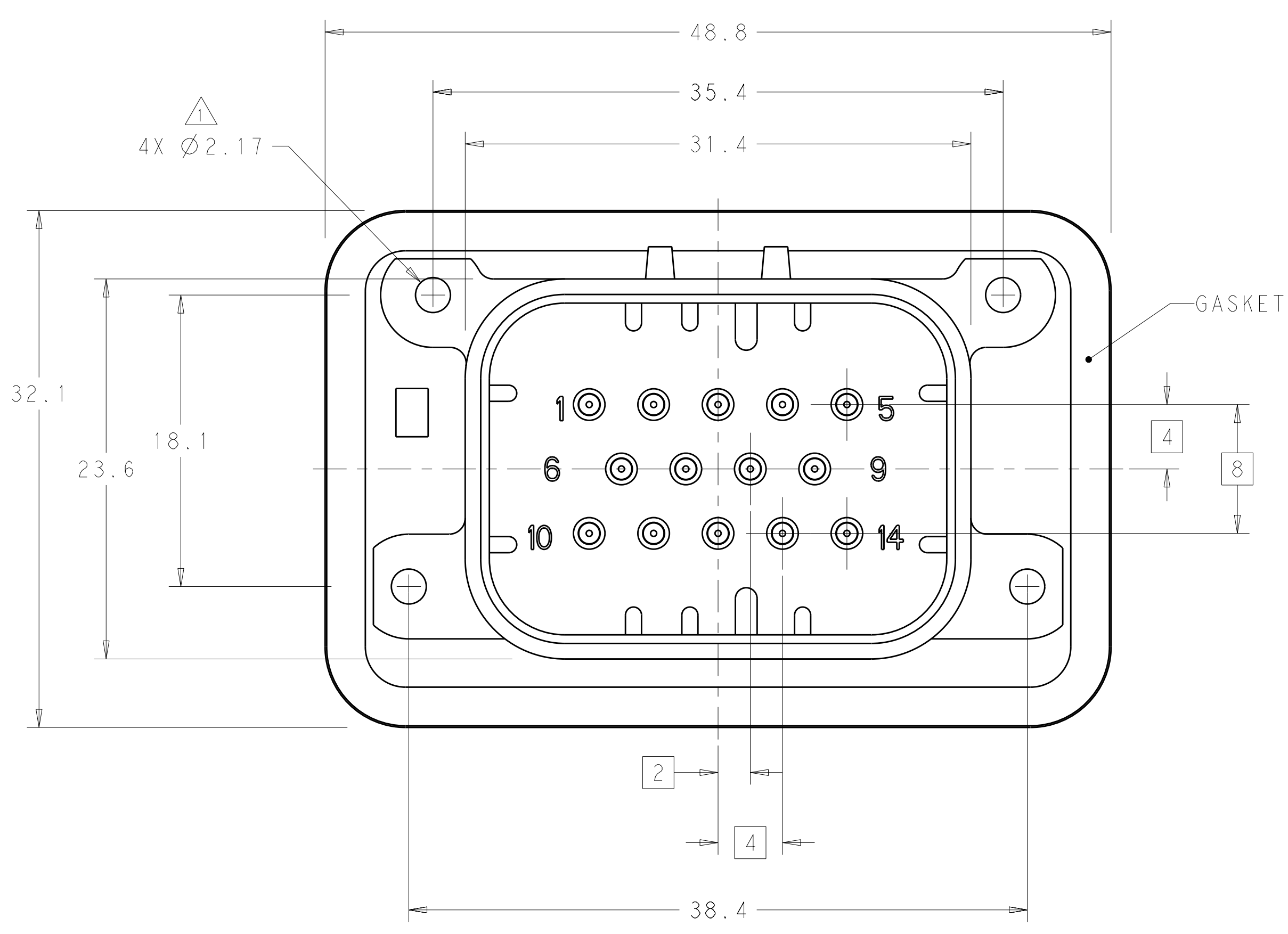


LOC	DIST	REV	DATE	BY	APPD
GE	00	A1	29MAY2012	DD	DS

- 1 ACCEPTS #4 SELF TAPPING THREAD FORMING SCREWS OR METRIC EQUIVALENT. DRIVE TO 0.6 N-m MAX
- 2 DATE CODE TO BE BRANDED IN THIS LOCATION PER TE SPEC 102-60. USE 5 DIGIT CODE: FIRST 2 DIGITS = YEAR, SECOND 2 DIGITS = WEEK, LAST DIGIT = DAY.
- 3 MATERIALS: HEADER HOUSING - GLASS FILLED PBT  
PINS - TIN OR GOLD PLATED BRASS  
GASKET - SILICONE
- 4 HOUSING COLORS ARE MECHANICALLY KEYPED TO MATE ONLY WITH IDENTICALLY COLORED PLUG ASSEMBLIES.
- 5. HEADER MATES TO PLUG ASSEMBLY 776273 WHICH USES REELED TERMINAL 770520 OR LOOSE PIECE TERMINAL 770854
- 6 HT ON THIS SURFACE TO INDICATE HIGH TEMPERATURE MATERIAL



776376-2 & 1-776376-2  
 KEY LOCATION  
 SCALE 2:1

776376-1 & 1-776376-1 SHOWN

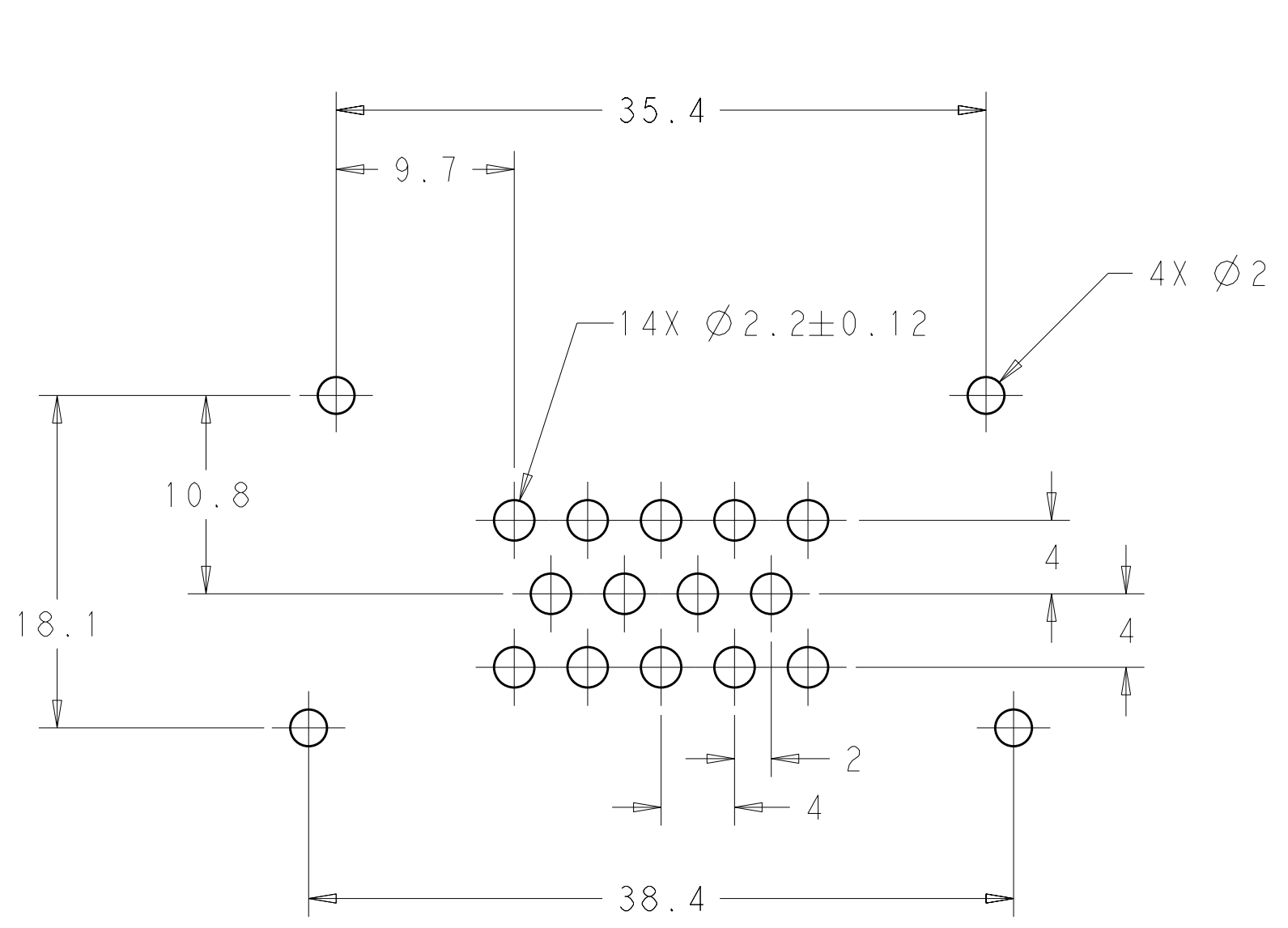
NATURAL	DURAGOLD	1-776376-2
BLACK	DURAGOLD	1-776376-1
NATURAL	TIN	776376-2
BLACK	TIN	776376-1
HEADER COLOR	PLATING	PART NUMBER

THIS DRAWING IS A CONTROLLED DOCUMENT.

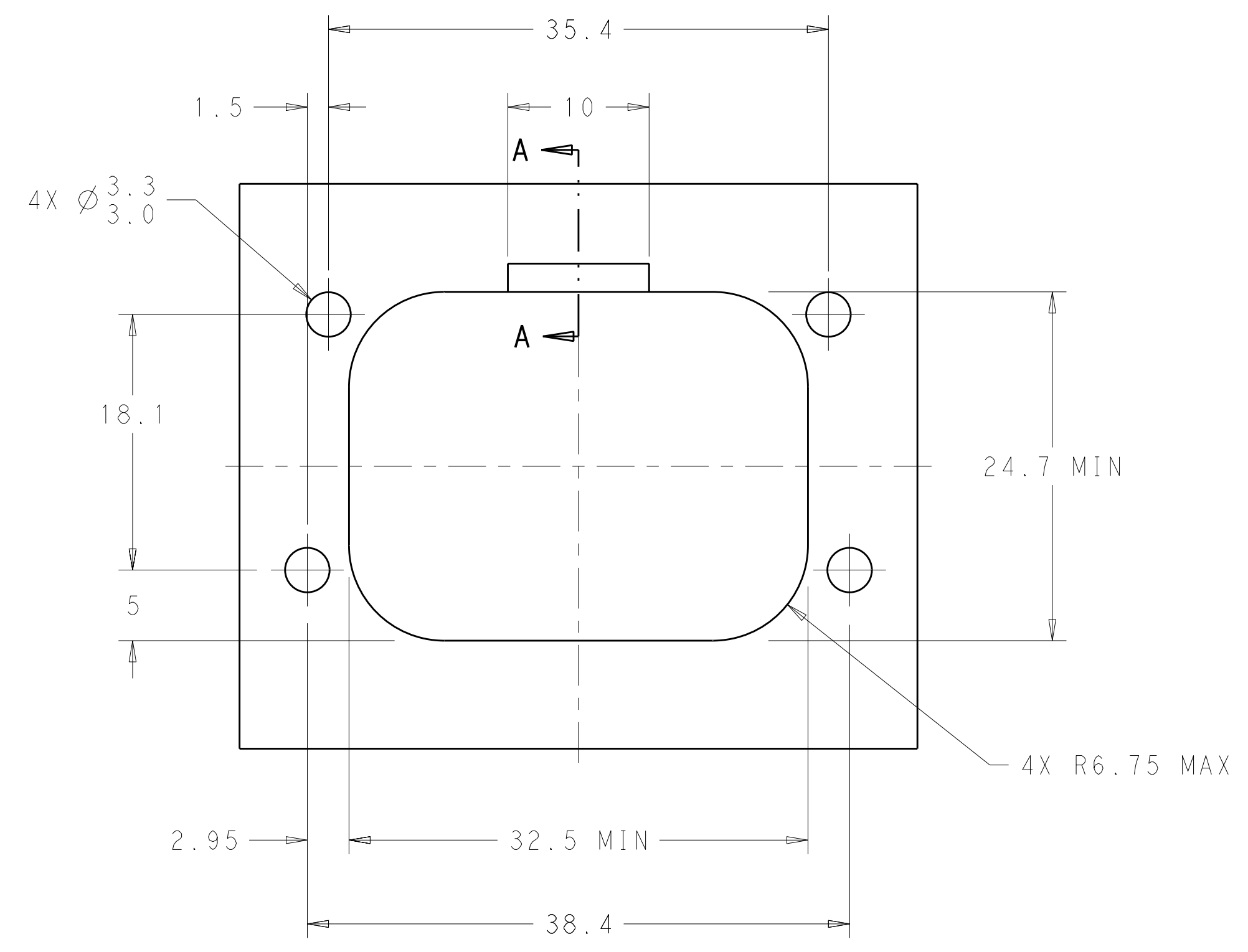
DIMENSIONS:	TOLERANCES UNLESS OTHERWISE SPECIFIED:	DATE	26 APR 2012
mm	9 PLC ± 2 PLC ±0.2 5 PLC ±0.13 4 PLC ± ANGLES ±°	CHK	D. STRAUSSER
MATERIAL	FINISH	APVD	D. STRAUSSER
3	3	PRODUCT SPEC	108-1329
CUSTOMER DRAWING		APPLICATION SPEC	114-16016
SCALE 4:1		WEIGHT	-
SHEET 1 OF 2		SIZE	A1
REV A1		CAGE CODE	776376

STE TE Connectivity  
 ASSEMBLY, HEADER, 14 POSITION, VERTICAL, AMPSEAL, HIGH TEMPERATURE, WITH FLANGE SEAL

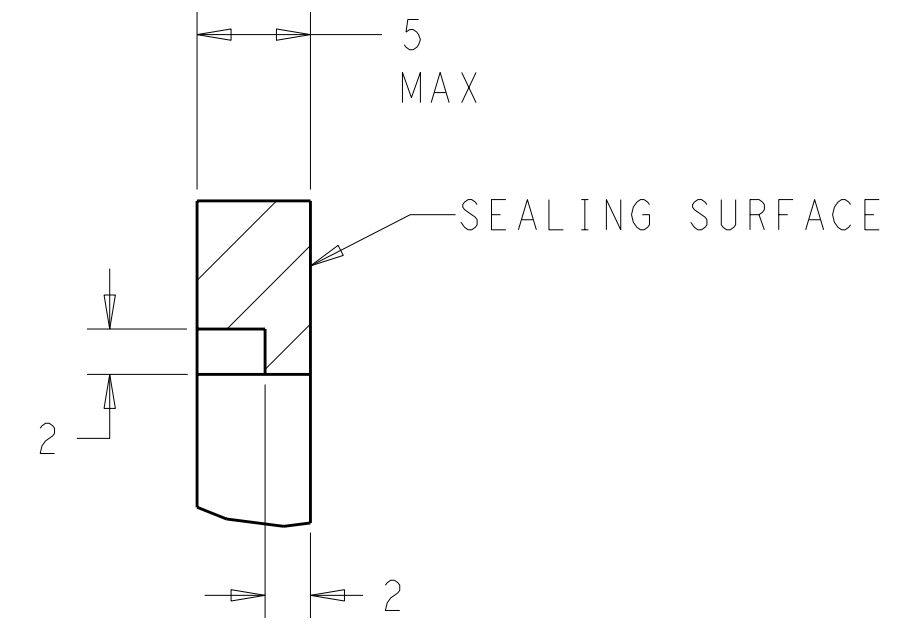
LOC	DIST	REVISIONS					
GE	00	P	LTB	DESCRIPTION	DATE	DWN	APVD
		-	-	SEE SHEET 1	-	-	-



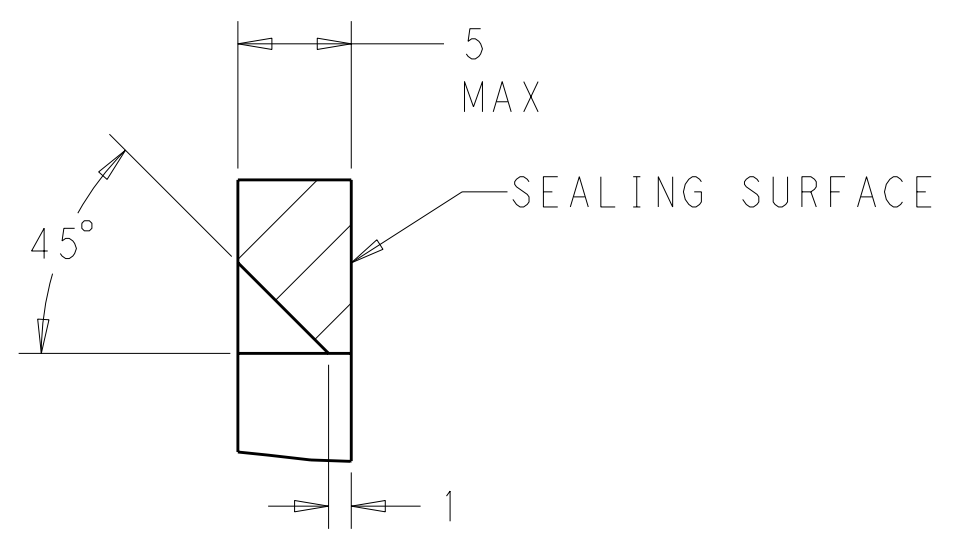
RECOMMENDED P.C. BOARD LAYOUT FOR 1.57 THICK P.C. BOARD



RECOMMENDED MOUNTING HOLE LAYOUT FOR 5.0 MAX THICK PANEL



SECTION A-A  
 OPTIONAL CONSTRUCTION IF PANEL THICKNESS IS GREATER THAN 2.0



SECTION A-A  
 OPTIONAL CONSTRUCTION IF PANEL THICKNESS IS GREATER THAN 2.0

THIS DRAWING IS A CONTROLLED DOCUMENT.		DWN: D. STRAUSSER 26APR2012	TE Connectivity
DIMENSIONS: mm		CHK: D. STRAUSSER 26APR2012	
TOLERANCES UNLESS OTHERWISE SPECIFIED:		APVD: D. STRAUSSER 26APR2012	NAME: ASSEMBLY, HEADER, 14 POSITION, VERTICAL, AMPSEAL HIGH TEMPERATURE, WITH FLANGE SEAL
0 PLC	±	PRODUCT SPEC	SIZE: CAGE CODE DRAWING NO
1 PLC	±0.2	108-1329	RESTRICTED TO
2 PLC	±0.13	APPLICATION SPEC	A100779C-776262
3 PLC	±	114-16016	SCALE: 2:1 SHEET 2 OF 2 REV A1
4 PLC	±	WEIGHT: -	
ANGLES	±4°	CUSTOMER DRAWING	
MATERIAL: -	FINISH: -		