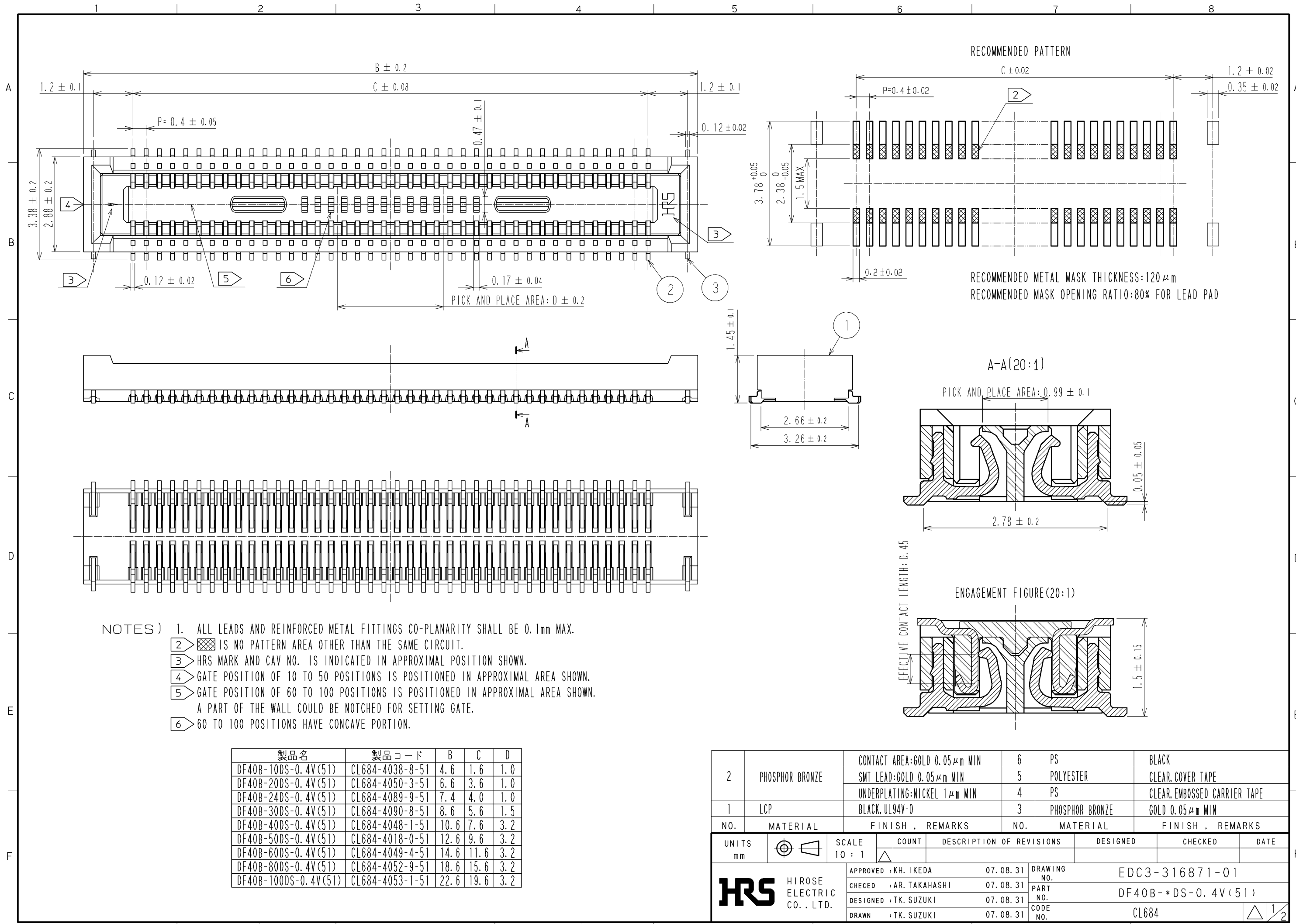


2008/11/04 11:21:36 HK. HORINO

DRAWING FOR REFERENCE: This is subject to change without notice

APPLICABLE STANDARD				
RATING	OPERATING TEMPERATURE RANGE	-35°C TO 85°C (NOTE 1)	STORAGE TEMPERATURE RANGE	-10°C TO 60°C
	VOLTAGE	30V AC	APPLICABLE CONNECTOR	DF40C-*DP-0.4V
	CURRENT	0.3A		
SPECIFICATIONS				
ITEM	TEST METHOD	REQUIREMENTS	QT	AT
CONSTRUCTION				
GENERAL EXAMINATION	VISUALLY AND BY MEASURING INSTRUMENT.	ACCORDING TO DRAWING.	X	X
MARKING	CONFIRMED VISUALLY.		X	X
ELECTRIC CHARACTERISTICS				
CONTACT RESISTANCE	20mV AC OR LESS 1kHz, 1mA.	90mΩ MAX.	X	—
INSULATION RESISTANCE	100V DC.	50MΩ MIN.	X	—
VOLTAGE PROOF	100V AC FOR 1 min.	NO FLASHOVER OR BREAKDOWN.	X	—
MECHANICAL CHARACTERISTICS				
MECHANICAL OPERATION	30TIMES INSERTIONS AND EXTRACTATIONS.	① CONTACT RESISTANCE: 90mΩ MAX. ② NO DAMAGE, CRACK OR LOOSENESS OF PARTS.	X	—
VIBRATION	FREQUENCY 10 TO 55 TO 10 Hz, APPROX 5min, SINGLE AMPLITUDE 0.75 mm, 10CYCLES, FOR 3 DIRECTIONS.	① NO ELECTRICAL DISCONTINUITY OF 1 μs. ② NO DAMAGE, CRACK OR LOOSENESS OF PARTS.	X	—
SHOCK	490 m/s <sup>2</sup> DURATION OF PULSE 11 ms AT 3 TIMES FOR 3 DIRECTIONS.	① NO ELECTRICAL DISCONTINUITY OF 1 μs. ② NO DAMAGE, CRACK OR LOOSENESS OF PARTS.	X	—
ENVIRONMENTAL CHARACTERISTICS				
RAPID CHANGE OF TEMPERATURE	TEMPERATURE -55→ 5 TO 35→ 85→ 5 TO 35°C TIME 30→ 5 MAX → 30→ 5 MAX min UNDER 5 CYCLES.	① CONTACT RESISTANCE: 90mΩ MAX. ② INSULATION RESISTANCE: 50MΩ MIN. ③ NO DAMAGE, CRACK OR LOOSENESS OF PARTS.	X	—
DAMP HEAT (STEADY STATE)	EXPOSED AT 40 ± 2 °C, 90 TO 95 %, 96 h.	① CONTACT RESISTANCE: 90mΩ MAX. ② INSULATION RESISTANCE: 25MΩ MIN. ③ NO DAMAGE, CRACK OR LOOSENESS OF PARTS.	X	—
SULPHUR DIOXIDE	EXPOSED IN 25 PPM FOR 96h, 25°C, 75%.	① CONTACT RESISTANCE: 180mΩ MAX. ② NO DAMAGE, CRACK OR LOOSENESS OF PARTS.	X	—
COUNT	DESCRIPTION OF REVISIONS	DESIGNED	CHECKED	DATE
△				
REMARKS		APPROVED	KH. IKEDA	07. 12. 21
NOTE1: INCLUDE THE TEMPERATURE RISING BY CURRENT		CHECKED	AR. TAKAHASHI	07. 12. 21
		DESIGNED	TK. SUZUKI	07. 12. 21
Unless otherwise specified, refer to JIS C 5402.		DRAWN	TK. SUZUKI	07. 12. 21
Note QT: Qualification Test AT: Assurance Test X: Applicable Test		DRAWING NO.		ELC4-316871-01
<b>HRS</b>	SPECIFICATION SHEET	PART NO.	DF40B-*DS-0.4V (51)	
	HIROSE ELECTRIC CO., LTD.	CODE NO.	CL684	△ 1/1



- NOTES )
1. ALL LEADS AND REINFORCED METAL FITTINGS CO-PLANARITY SHALL BE 0.1mm MAX.
  2. IS NO PATTERN AREA OTHER THAN THE SAME CIRCUIT.
  3. HRS MARK AND CAV NO. IS INDICATED IN APPROXIMAL POSITION SHOWN.
  4. GATE POSITION OF 10 TO 50 POSITIONS IS POSITIONED IN APPROXIMAL AREA SHOWN.
  5. GATE POSITION OF 60 TO 100 POSITIONS IS POSITIONED IN APPROXIMAL AREA SHOWN. A PART OF THE WALL COULD BE NOTCHED FOR SETTING GATE.
  6. 60 TO 100 POSITIONS HAVE CONCAVE PORTION.

製品名	製品コード	B	C	D
DF40B-10DS-0.4V(51)	CL684-4038-8-51	4.6	1.6	1.0
DF40B-20DS-0.4V(51)	CL684-4050-3-51	6.6	3.6	1.0
DF40B-24DS-0.4V(51)	CL684-4089-9-51	7.4	4.0	1.0
DF40B-30DS-0.4V(51)	CL684-4090-8-51	8.6	5.6	1.5
DF40B-40DS-0.4V(51)	CL684-4048-1-51	10.6	7.6	3.2
DF40B-50DS-0.4V(51)	CL684-4018-0-51	12.6	9.6	3.2
DF40B-60DS-0.4V(51)	CL684-4049-4-51	14.6	11.6	3.2
DF40B-80DS-0.4V(51)	CL684-4052-9-51	18.6	15.6	3.2
DF40B-100DS-0.4V(51)	CL684-4053-1-51	22.6	19.6	3.2

NO.	MATERIAL	FINISH	REMARKS	NO.	MATERIAL	FINISH	REMARKS
2	PHOSPHOR BRONZE		CONTACT AREA: GOLD 0.05 μm MIN SMT LEAD: GOLD 0.05 μm MIN UNDERPLATING: NICKEL 1 μm MIN	6	PS		BLACK
				5	POLYESTER		CLEAR, COVER TAPE
				4	PS		CLEAR, EMBOSSED CARRIER TAPE
1	LCP		BLACK, UL94V-0	3	PHOSPHOR BRONZE		GOLD 0.05 μm MIN

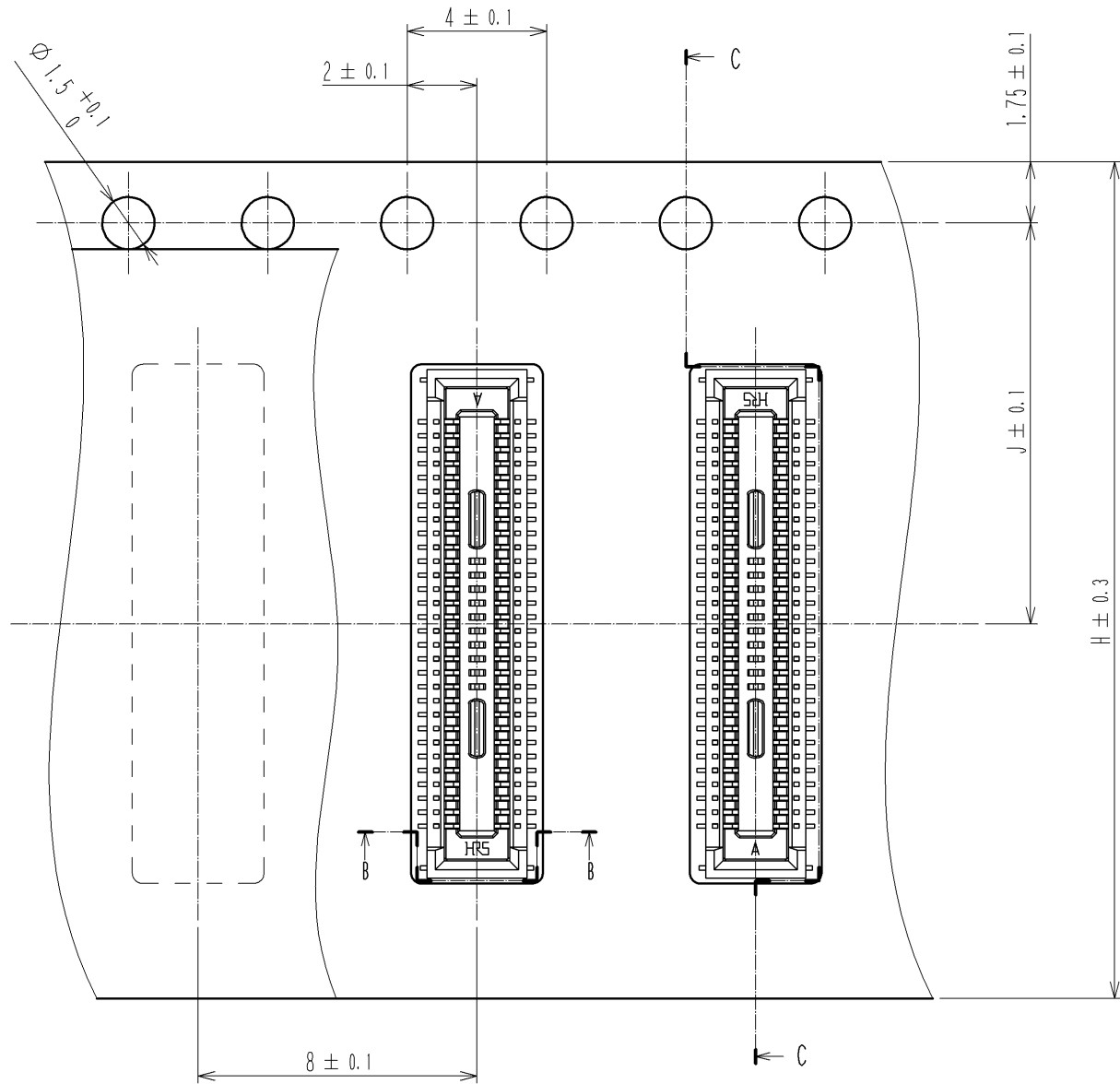
  

UNITS	SCALE	COUNT	DESCRIPTION OF REVISIONS	DESIGNED	CHECKED	DATE
mm	10:1	△	APPROVED: KH. IKEDA 07.08.31 CHECKED: AR. TAKAHASHI 07.08.31 DESIGNED: TK. SUZUKI 07.08.31 DRAWN: TK. SUZUKI 07.08.31			

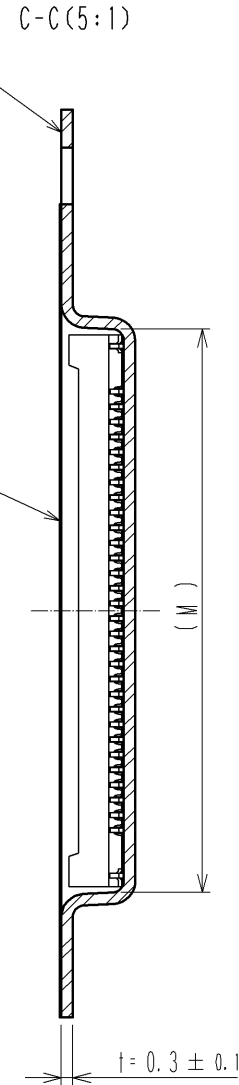
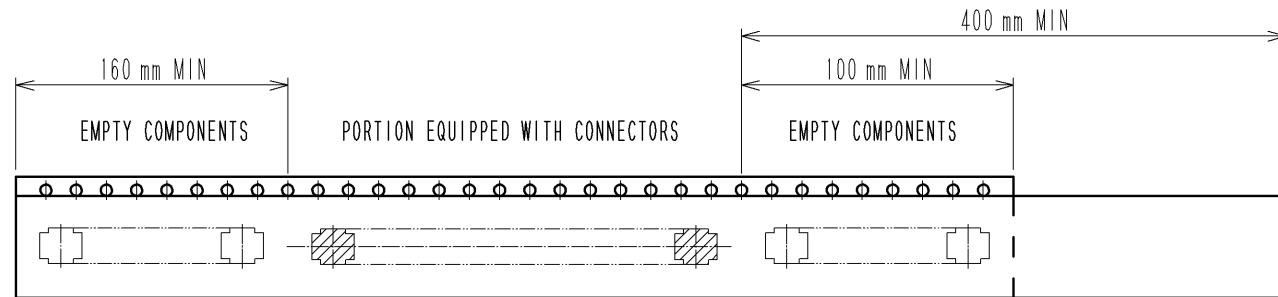
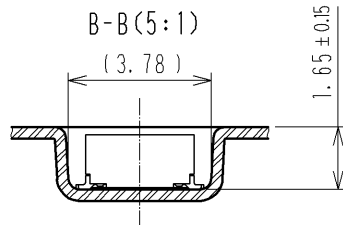
  

DRAWING NO.	PART NO.	CODE NO.
EDC3-316871-01	DF40B-*DS-0.4V(51)	CL684

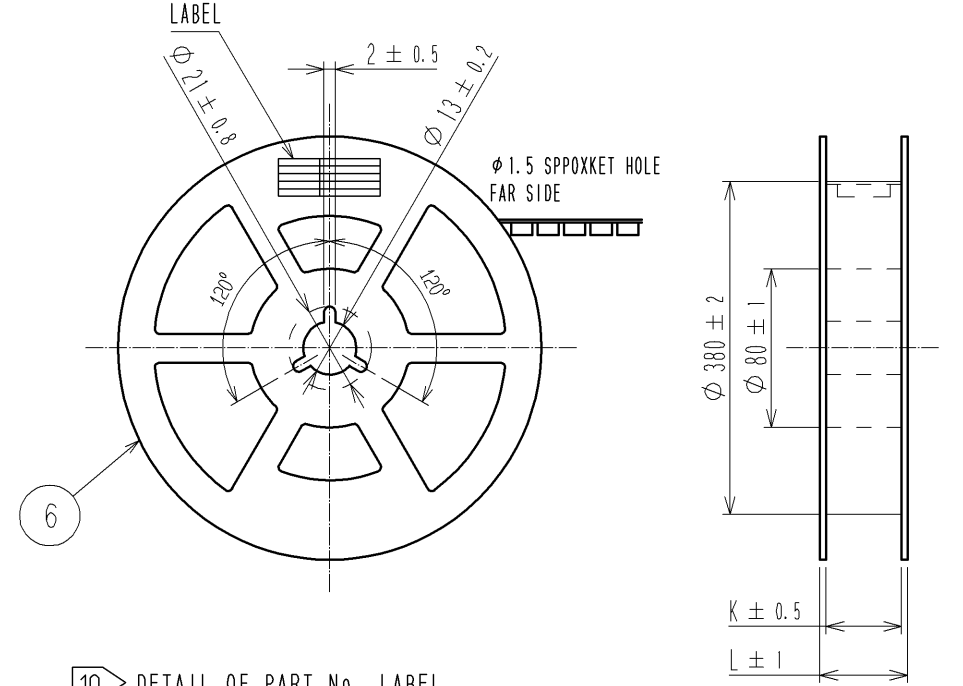
EMBOSSED CARRIER TAPE PACKAGING (5:1)



DIRECTION OF UNREELING  $\rightarrow$



STYLE AND DIMENSION OF REEL (FREE)



10 DETAIL OF PART No. LABEL

製造年月日	** ** *
製品コード	CL684-*****-51
製品名	DF40B-DS-0.4V(51)
数量	5000
納入者	ヒロセ電機(株)

製品名	H	J	K	L	M
DF40B-10DS-0.4V(51)	16	7.5	17.5	21.5	2.9
DF40B-20DS-0.4V(51)	16	7.5	17.5	21.5	4.9
DF40B-24DS-0.4V(51)	16	7.5	17.5	21.5	6.9
DF40B-30DS-0.4V(51)	24	11.5	25.5	29.5	8.9
DF40B-40DS-0.4V(51)	24	11.5	25.5	29.5	10.9
DF40B-50DS-0.4V(51)	24	11.5	25.5	29.5	12.9
DF40B-60DS-0.4V(51)	24	11.5	25.5	29.5	14.9
DF40B-80DS-0.4V(51)	32	14.2	33.5	37.5	18.9
DF40B-100DS-0.4V(51)	44	20.2	45.5	49.5	22.9

NOTES 7. PER REEL 5000 CONNECTORS.

8. THE DIMENSIONS IN PARENTHESES ARE FOR REFERENCE.

9 REFER TO JIS C 0806 (PACKING OF COMPONENTS FOR AUTOMATIC HANDLING)

10 DETAIL OF PART No. LABEL IS WRITTEN IN JAPANESE.

PART NO. LABEL DESCRIBES THE FOLLOWING INFORMATION FROM TOP.

PRODUCTION DATE:

PRODUCT CODE: CL684-\*\*\*\*\*-51

PART NUMBER: DF40B-DS-0.4V(51)

NUMBER OF PIECES: 5000 PIECES

SUPPLIER NAME: HIROSE ELECTRIC CO., LTD.

11. 80 TO 100 POSITIONS EMBOSSED CARRIER TAPE HAS THE SPROCKET HOLE ON BOTH SIDES.

<b>HRS</b>	DRAWING NO.	EDC3-316871-01
	PART NO.	DF40B-DS-0.4V(51)
	CODE NO.	CL684
		$\triangle 2/2$