

## ST-OV3- 60DC/220DC/1

Order No.: 2903192


The illustration shows version ST-OV 3- 5 DC/220 DC/1



<http://eshop.phoenixcontact.de/phoenix/treeViewClick.do?UID=2903192>

Pluggable power optocoupler, with light indicator and protection circuits in the input and output circuits, input: 48 - 60 V DC, output: 15-220 V DC/max. 1 A, can be plugged on basic termination blocks

### Commercial data

GTIN (EAN)	 4 017918 078980
Note	Made-to-order
sales group	G101
Pack	10 pcs.
Customs tariff	85364190
Catalog page information	Page 90 (IF-2002)

### Product notes

WEEE/RoHS-compliant since:  
06/07/2007



<http://www.download.phoenixcontact.com>  
Please note that the data given here has been taken from the online catalog. For comprehensive information and data, please refer to the user documentation. The General Terms and Conditions of Use apply to Internet downloads.

## Technical data

### Input data

Nominal input voltage $U_N$	60 V DC +20% -36%
Switching threshold "0" signal, voltage	$\leq 6.4$ V
Switching threshold "1" signal voltage	$\geq 11$ V
Typical input current at $U_N$	6 mA
Typical response time	25 $\mu$ s
Typical turn-off time	1 ms
Transmission frequency	100 Hz

### Output data

Output nominal voltage range	15 V DC ... 220 V DC
Limiting continuous current	1 A (see derating curve)
Surge current	2 A (t = 1 s)
Peak offstate voltage	220 V DC (Collector-emitter reverse voltage)
Voltage drop at max. limiting continuous current	1.2 V
Output circuit	2-wire, floating
Type of protection	Protection against polarity reversal Surge protection
Protective circuit/component	Polarity protection diode

### General data

Width	20.8 mm
Height	33 mm
Depth	66.5 mm
Test voltage input/output	2.5 kV AC
Ambient temperature (operation)	-20 °C ... 60 °C
Ambient temperature (storage/transport)	-20 °C ... 70 °C
Mounting position	Any
Standards/regulations	DIN VDE 0110

## Certificates / Approvals

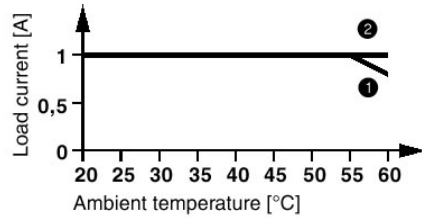


Certification

GOST

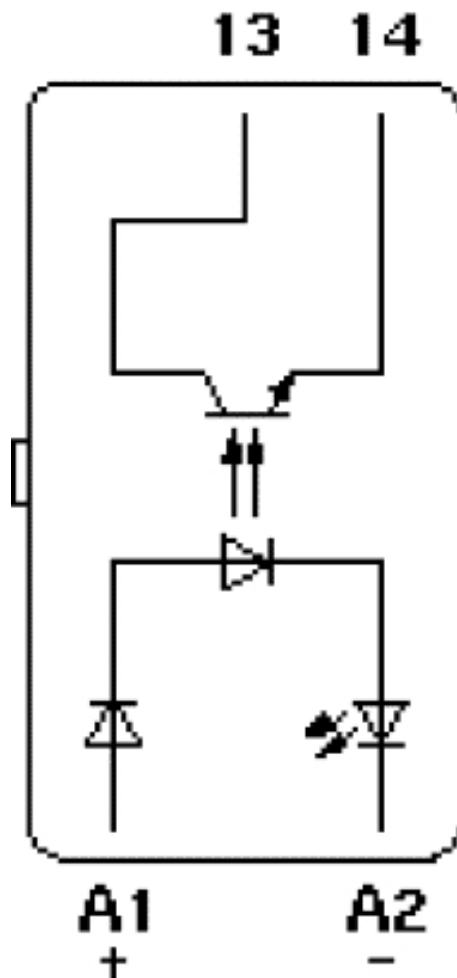
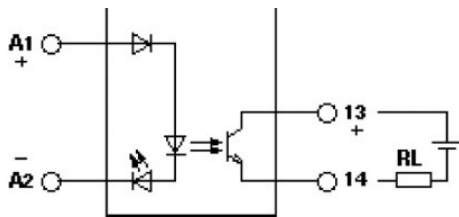
## Diagrams/Drawings

### Diagram



- ① mounted in rows with zero spacing.
- ② power optocouplers mounted in rows,  $\geq 20$  mm.

### Circuit diagram



**Address**

PHOENIX CONTACT Deutschland GmbH  
Flachmarktstr. 8  
32825 Blomberg, Germany  
Phone +49 5235 3 12000  
Fax +49 5235 3 41200  
<http://www.phoenixcontact.de>



© 2011 Phoenix Contact  
Technical modifications reserved;