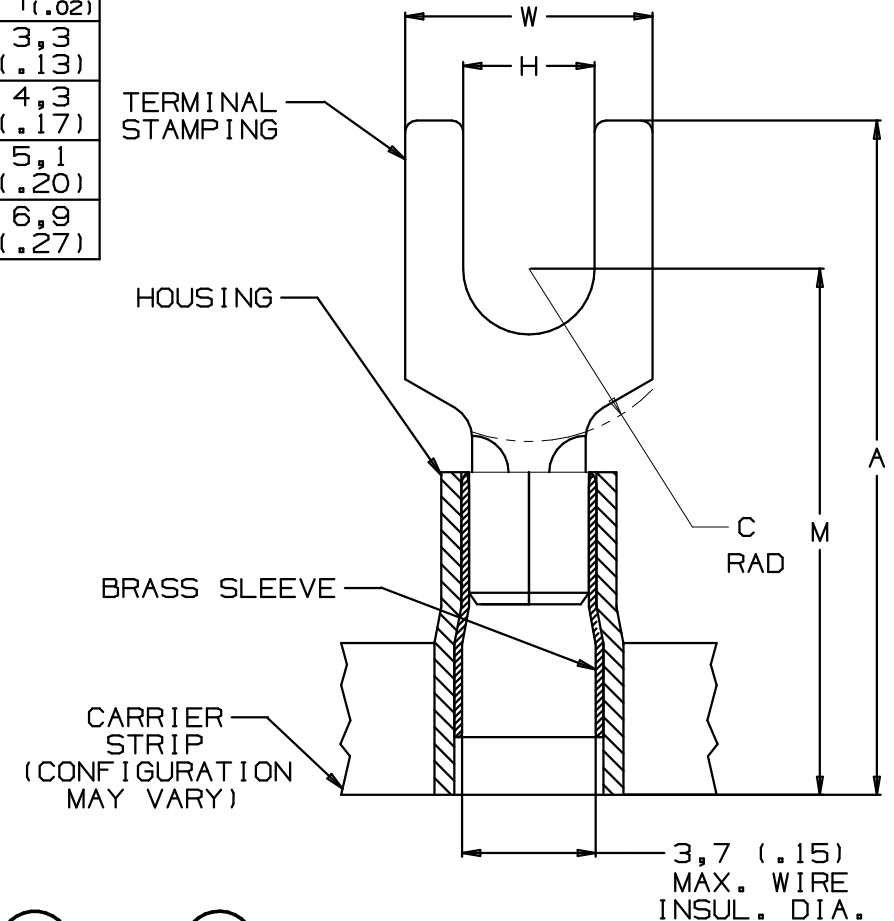


| PART NUMBER | STUD SIZE | WIRE RANGE<br>mm <sup>2</sup><br>(AWG) | DIMENSIONS mm   |                 |                 |                 |                 |
|-------------|-----------|--|-----------------|-----------------|-----------------|-----------------|-----------------|
|             |           |  | A ±.80<br>(.03) | W ±.25<br>(.01) | C ±.38<br>(.01) | M ±.50<br>(.02) | H ±.50<br>(.02) |
| PMN1-3F-3K  | M3        | 0,5-1,5<br>(22-18)                     | 19,9<br>(.79)   | 5,9<br>(.23)    | 5,0<br>(.20)    | 16,5<br>(.65)   | 3,3<br>(.13)    |
| PMN1-4F-3K  | M4        | 0,5-1,5<br>(22-18)                     | 21,6<br>(.85)   | 8,2<br>(.32)    | 5,8<br>(.23)    | 17,3<br>(.68)   | 4,3<br>(.17)    |
| PMN1-5F-3K  | M5        | 0,5-1,5<br>(22-18)                     | 21,8<br>(.86)   | 8,9<br>(.35)    | 6,3<br>(.25)    | 17,8<br>(.70)   | 5,1<br>(.20)    |
| PMN1-6F-3K  | M6        | 0,5-1,5<br>(22-18)                     | 26,4<br>(1.04)  | 11,2<br>(.44)   | 8,4<br>(.33)    | 20,1<br>(.79)   | 6,9<br>(.27)    |

NOTES:

- USED FOR:
  - 600V MAX. BUILDING WIRE  
1000V MAX. IN SIGNS, FIXTURES, AND LUMINAIRES
  - 105°C (221°F) MAX. TEMP. RATING OF INSUL. MAT'L
  - SOLID OR STRANDED COPPER WIRE
- PACKAGE QTY:  
3K = 3000 PCS. ON CONTINUOUSLY MOLDED CARRIER STRIP
- MATERIAL:
  - STAMPING: .81 (.03)THK. COPPER, TIN PLATED
  - SLEEVE: BRASS, TIN PLATED
  - HOUSING: TYPE 6/6 NYLON, RED
- WIRE STRIP LENGTH:  $5,6^{+,8}_{-0}$  ( $7/32^{+1/32}$ )
- DIMENSIONS IN BRACKETS ARE IN INCHES OR AWG
- UL LISTED AND CSA CERTIFIED WITH COPPER 22-18AWG WIRE ONLY



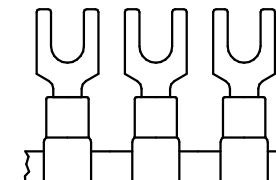
|             |          | PANDUIT PRESS                 |                               |        |        |                |                  |
|-------------|----------|-------------------------------|-------------------------------|--------|--------|----------------|------------------|
|             |          | CP-851<br><i>DISCONTINUED</i> | CP-860<br><i>DISCONTINUED</i> | CP-861 | CP-862 | CP-871<br>60HZ | CP-871/E<br>50HZ |
| APPLICATORS | CA-800   |                               | X                             | X      |        |                |                  |
|             | CA-800EZ | X                             |                               |        |        | X              | X                |
|             | CA9      |                               |                               |        | X      | X              | X                |



LISTED  
587H  
E52164



CERTIFIED  
LR31212



A41610\_01

|     |      |     |     |  |         |      |     |  |                       |       |             |
|-----|------|-----|-----|--|---------|------|-----|--|-----------------------|-------|-------------|
|     |      |     |     |  |         |      |     |  | TINLEY PARK, ILLINOIS |       |             |
| 01  | 3/06 | DAW | DAW | ADDED PANDUIT PRESS & APPLICATOR TABLE | TR00083 |      |     | 0,5-1,5 mm <sup>2</sup> METRIC CONTINUOUSLY MOLDED,<br>NYLON INSULATED FORK TERMINAL |                       |       |             |
| 00  | 9/97 | JKD | WJB | RELEASED                               | 6191    | LA   | DBH |  |                       |       |             |
| REV | DATE | BY  | CHK | DESCRIPTION                            | ECN #   | CUST | PM  | DRAWN BY   | CHK'D                 | SCALE | DRAWING NO. |
|     |      |     |     |  |         |      |     | TSM  |                       | NONE  | A41610      |