

DESCRIPTION

Demonstration circuit 627 features the LT3461 / LT3461A in a 12.0V output boost converter which operates from an input voltage of 3V to 6V. The maximum output current is 70mA when powered from a 5.0V input and 40mA when powered from a 3.3V input. A soft-start option is provided by the SHDN pin and can be configured with an on-board RC filter.

The internal schottky of the LT3461 / LT3461A reduces part count and the high switching frequency allows the use of a small SMT inductor and output capacitors. The small size of the circuit makes it ideal for space-sensitive applications.

The DC627A comes in two versions. The “-A” version uses the LT3461 and the “-B” version uses the LT3461A.

Design files for this circuit board are available. Call the LTC factory.

LT is a trademark of Linear Technology Corporation

Table 1. Performance Summary (T_A = 25°C)

PARAMETER	CONDITION	DC627A-A VALUE	DC627A-B VALUE
LT Part		LT3461ES6	LT3461AES6
Minimum Input Voltage		3V	3V
Maximum Input Voltage		6V	6V
Output Voltage V _{OUT}	V _{IN} = 3V to 6V	12V ±4%	12V ±4%
Maximum Output Current	V _{IN} = 3.3V	40mA	40mA
	V _{IN} = 5.0V	70mA	70mA
Typical Efficiency	V _{IN} = 3.3V, I _{OUT} = 40mA	79%	76%
	V _{IN} = 5.0V, I _{OUT} = 70mA	83%	81%
Typical Output Voltage Ripple (20MHz BW)	V _{IN} = 3.3V, I _{OUT} = 40mA	20mV _{P-P}	9mV _{P-P}
	V _{IN} = 5.0V, I _{OUT} = 70mA	28mV _{P-P}	12mV _{P-P}
Nominal Switching Frequency		1.3MHz	3.0MHz

QUICK START PROCEDURE

Demonstration circuit 627 is easy to set up to evaluate the performance of the LT3461 or LT3461A. Refer to Figure 1 for the proper measurement equipment setup and follow the procedure below:

1. Place jumper JP1 in the “ON” position if not already done.

2. With power off, connect the input power supply.
3. Turn on the input power source and set it to 3.3V. The output should be 12.0V ±4% at no load.
4. Connect the load from V_{OUT} to GND and set to 40mA. The output should still be 12.0V ±4%.

QUICK START GUIDE FOR DEMONSTRATION CIRCUIT 627 BOOST CONVERTER

5. Increase the input voltage to 5.0V and apply 70mA load and re-check regulation.
6. Measure the DC input current at $V_{IN} = 5.0V$ and $I_{OUT} = 70mA$.
 - a. For the DC627A-A, the input current should be less than 215mA.
 - b. For the DC627A-B, the input current should be less than 225mA.
7. Monitor the output voltage ripple. Refer to Figure 2 for the proper measurement technique.
8. Measure the output ripple frequency.

NOTE: If this circuit will be used in a hot plug application, then be sure to measure the inrush current. The maximum non-repetitive surge current the internal schottky can handle is 1.5A. The inrush current can be monitored by measuring the current through the inductor when V_{IN} is initially applied. Refer to the data sheet for more details.

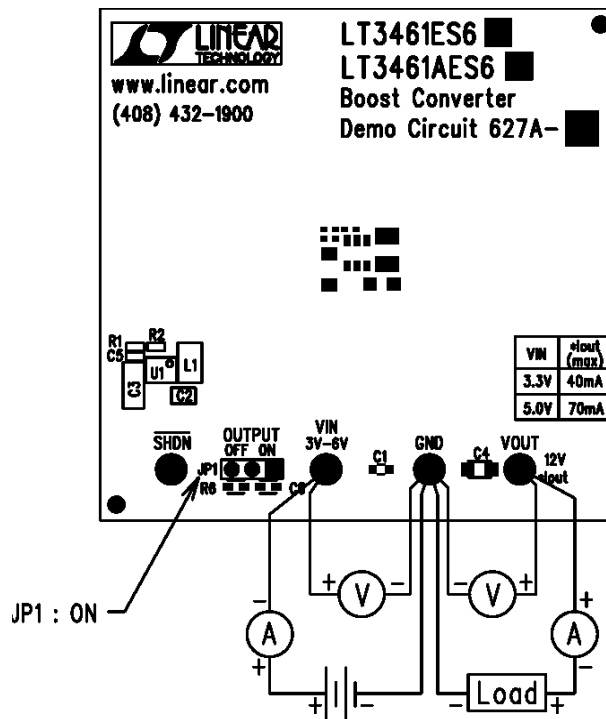


Figure 1. Proper Measurement Equipment Setup

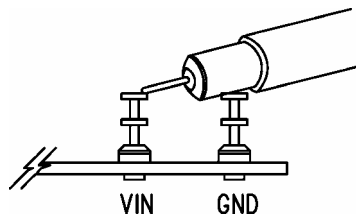
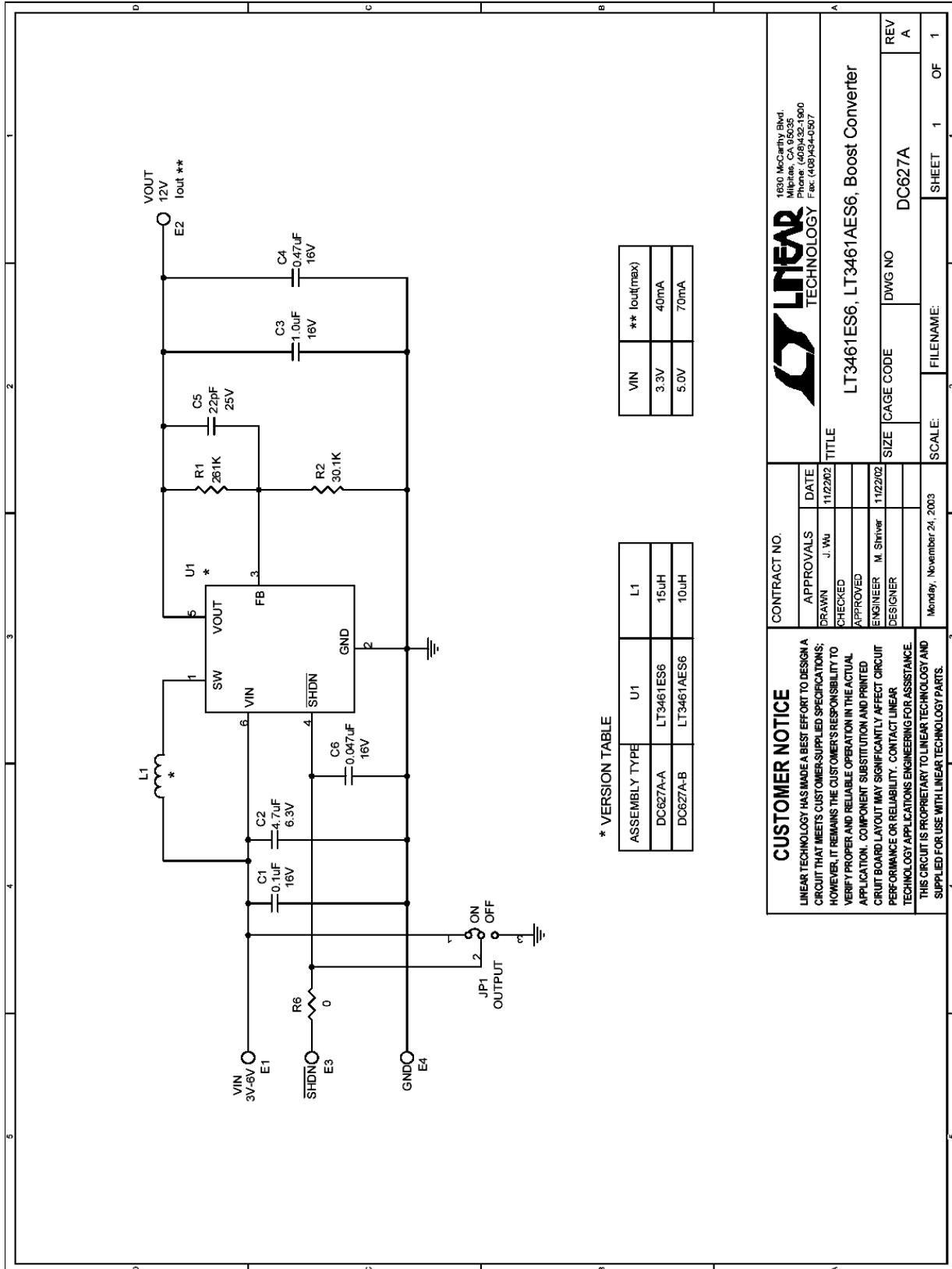


Figure 2. Measuring Input or Output Ripple

QUICK START GUIDE FOR DEMONSTRATION CIRCUIT 627 BOOST CONVERTER



* VERSION TABLE

ASSEMBLY TYPE	U1	L1
DC627A-A	LT3461ES6	15µH
DC627A-B	LT3461AES6	10µH

VIN	** Iout(max)
3.3V	40mA
5.0V	70mA

CUSTOMER NOTICE

LINEAR TECHNOLOGY HAS MADE A BEST EFFORT TO DESIGN A CIRCUIT THAT MEETS CUSTOMER-SUPPLIED SPECIFICATIONS; HOWEVER, IT REMAINS THE CUSTOMER'S RESPONSIBILITY TO VERIFY PROPER AND RELIABLE OPERATION IN THE ACTUAL APPLICATION. COMPONENT SUBSTITUTION AND PRINTED CIRCUIT BOARD LAYOUT MAY SIGNIFICANTLY AFFECT CIRCUIT PERFORMANCE OR RELIABILITY. CONTACT LINEAR TECHNOLOGY APPLICATIONS ENGINEERING FOR ASSISTANCE. THIS CIRCUIT IS PROPRIETARY TO LINEAR TECHNOLOGY AND SUPPLIED FOR USE WITH LINEAR TECHNOLOGY PARTS.

CONTRACT NO.

APPROVALS	DATE
DRAWN J. Wu	11/2/2002
CHECKED	
APPROVED	
ENGINEER M. Shriver	11/2/2002
DESIGNER	

TITLE

LT3461ES6, LT3461AES6, Boost Converter



1630 McCarthy Blvd.
Milpitas, CA 95035
Phone: (408)432-1600
Fax: (408)434-0507

SCALE:	FILENAME:	SHEET	OF
Monday, November 24, 2003		1	1

SIZE	CAGE CODE	DWG NO	REV
		DC627A	A