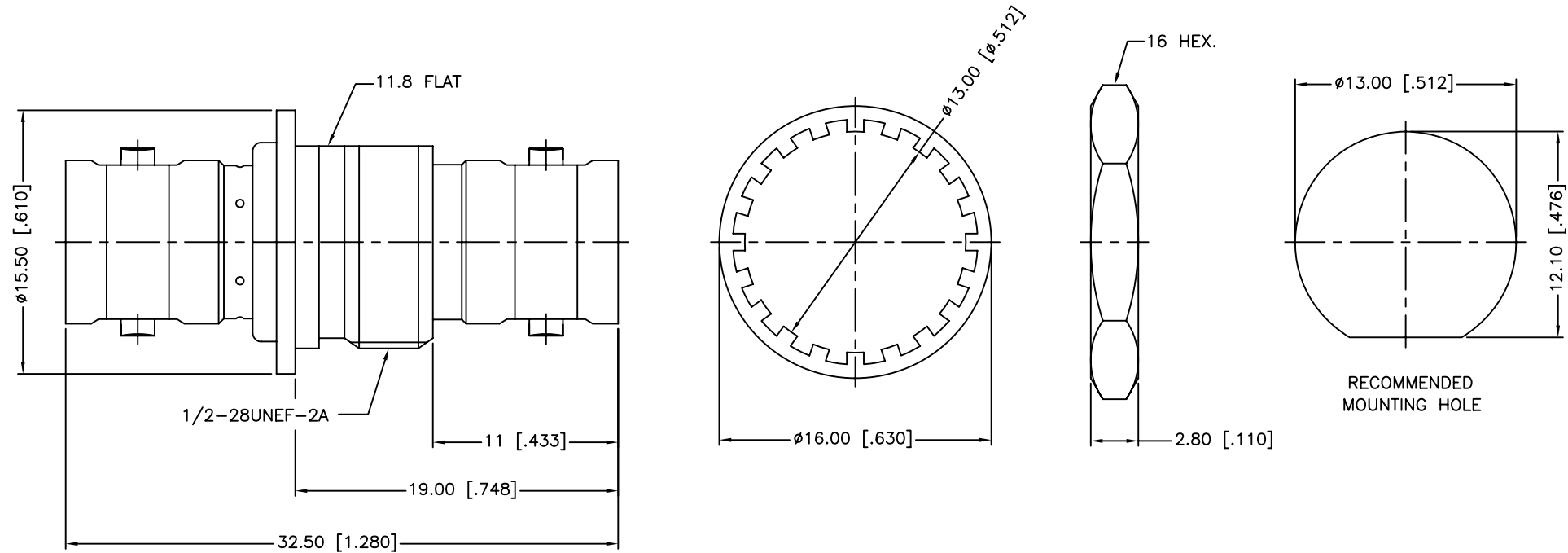


REV.	DATE	ECR NO.	DESCRIPTION
A	01/07/04	XXXXXX	UPDATE DRAWING FORMAT
B	06/22/11	2186	ADD NOTE 1, 2, 3



1. IMPEDANCE: 75 OHMS
2. FREQUENCY RANGE: 0-1 GHz
3. MAX. PANEL THICKNESS: 4.5MM

QTY	DESCRIPTION	MATERIAL	FINISH
1	HEX NUT	BRASS	NICKEL
1	LOCK WASHER	BRASS	NICKEL
1	CONTACT PIN	PHOSPHOR BRONZE	GOLD
1	INSULATOR	DELIN	NATURAL
1	BODY	BRASS	NICKEL

UNLESS OTHERWISE SPECIFIED DIMENSIONS ARE IN MILLIMETERS. DIMENSIONS IN [ ] ARE IN INCHES AND FOR CUSTOMER REFERENCE ONLY.

UNLESS OTHERWISE SPECIFIED TOLERANCES FOR MILLIMETERS ARE:  
0.5 - 8mm  $\pm 0.20$ mm  
8 - 30mm  $\pm 0.40$ mm  
30 - 120mm  $\pm 0.50$ mm

UNLESS OTHERWISE SPECIFIED TOLERANCES FOR INCHES ARE:  
.020 - .315 =  $\pm 0.007$ "  
.315 - 1.180 =  $\pm 0.015$ "  
1.180 - 4.724 =  $\pm 0.020$ "

DO NOT SCALE DRAWING

APPROVALS	DATE
DRAWN M.ZHANG	06/22/11
CHECKED	
ISSUED	
SHEET 1 OF 1	
CAD FILE	C:/CONNEX/112440.DWG

Amphenol Connex			
PART DESCRIPTION BNC FEMALE TO FEMALE BULKHEAD ISOLATED ADAPTOR - 75 OHM			
PART NO. 112440			
DWG. NO.	REV.	SIZE	SCALE
112440.DWG	B	A	NA