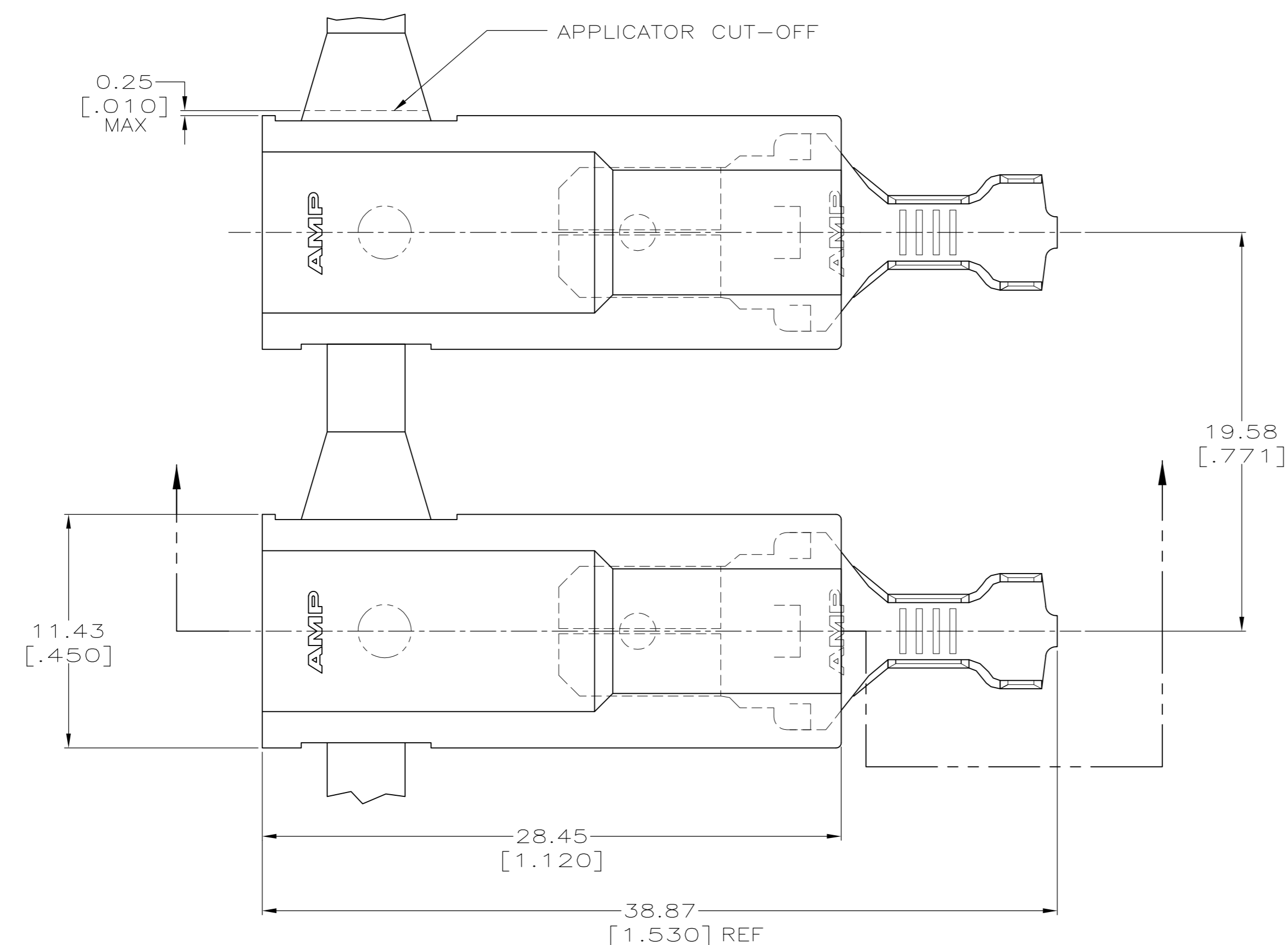
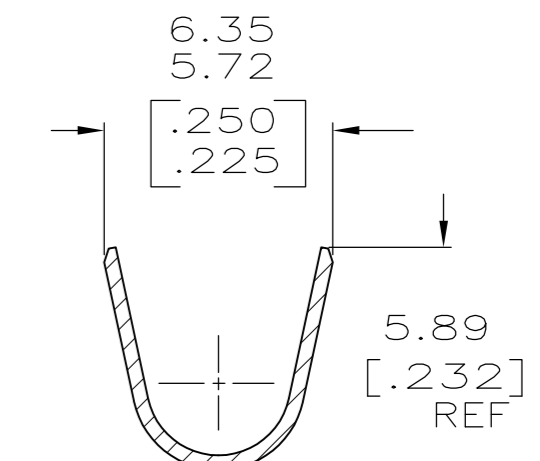
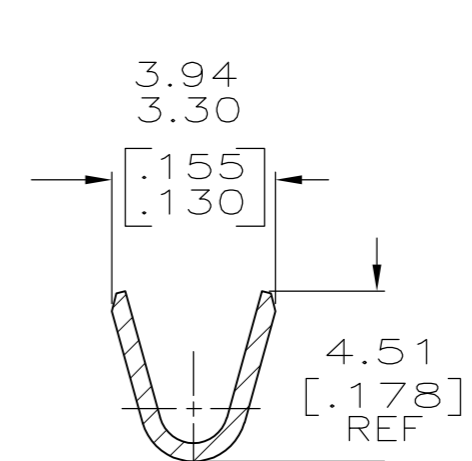
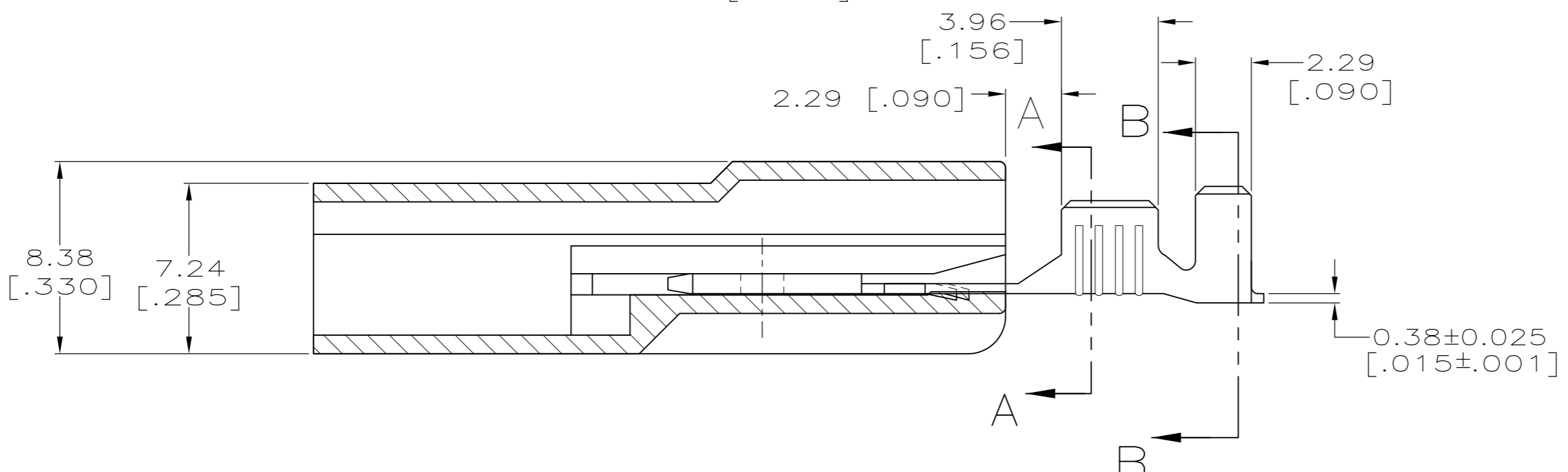


THIS DRAWING IS UNPUBLISHED. RELEASED FOR PUBLICATION
 © COPYRIGHT - By - ALL RIGHTS RESERVED.

LOC	DIST	REVISIONS			
P	LTR	DESCRIPTION	DATE	DWN	APVD
AF	50	E	REVISED PER ECR-12-013219	08JAN13	KH KR



- 1 FASTON TAB BASE #1217166, ARE USED IN THIS PRODUCT.
 - 2 WIRE SIZE IS [#18-#14] AWG.
 - 3 INSULATION RANGE IS 3.30-4.57 [.130-.180] DIA.
 - 4 MATES WITH A 6.35 X 0.81 [.250 X .032] RECEPTACLE.
- △5 MATERIAL & FINISH
 TERMINAL - BRASS, SEE TABLE
 HOUSING - HIGH TEMP NYLON 6, WHITE



TIN PLATE	521451-2
-	521451-1
FINISH	PART NO.

THIS DRAWING IS A CONTROLLED DOCUMENT.

DWN	JR RUTH	21DEC01
CHK	MS FEHER	21DEC01
APVD	J HUMMEL	21DEC01
PRODUCT SPEC	108-1285	
APPLICATION SPEC	114-2124	
WEIGHT	-	

TE Connectivity

ASSEMBLY, TAB, ULTRA-POD, 6.35 [.250] SERIES

SIZE	A2	CAGE CODE	00779	DRAWING NO	C=521451	RESTRICTED TO	-
SCALE	5:1	SHEET	1 OF 1	REV	E		