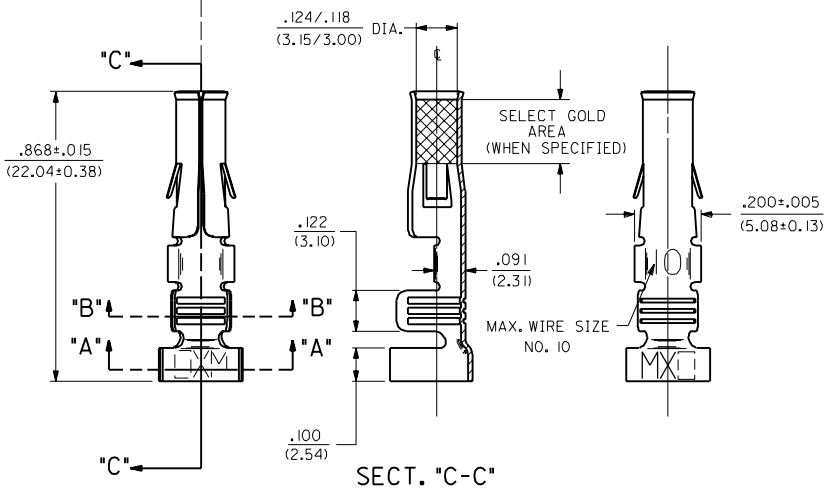
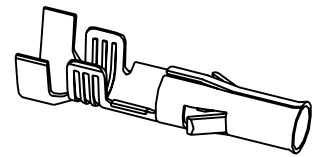
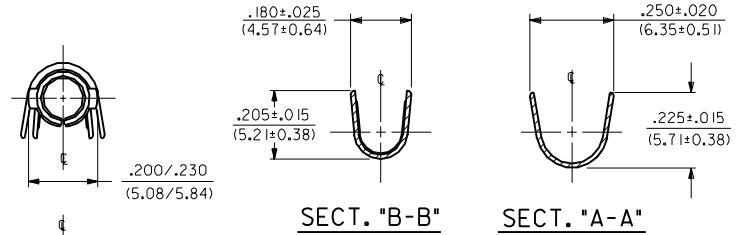


PART NO.	ENG. NO.	FLAT STOCK PART NO.
18-12-1602	1901-I(P90)DL	80-02-1302
18-12-1601	1901-I(P90)I	80-02-1302



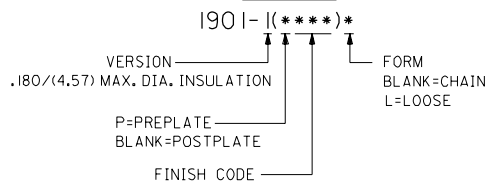
SECT. "C-C"

NOTES:

1. TERMINAL FOR USE WITH .125/(3.17) SERIES HOUSINGS AND WILL ACCEPT 10 THRU 14 AWG WIRE HAVING A .180/(4.57) MAX. DIAMETER INSULATION.
2. INSERTION FORCE: 6.0 LBS. MAX. WHEN TERMINAL IS INSERTED INTO .125/(3.17) DIA. CORE HOLE.
3. PULL OUT FORCE: 30 LBS. MIN. RETENTION IN HOUSING .

FINISH CODES:  
901 HOT TIN DIP .000020/(0.0005) MIN.

LEGEND



MATERIAL NOTES:  
1. CARTRIDGE BRASS, ALLOY #C26000;  
.013/(0.33) THICK, SPRING TEMPER

REV.	DESCRIPTION	DATE
E3	ADDED ISO VIEW UCR 98-0248 WANG 98-05-20	
E2	OBS. -(P555) & -(P555L) ECR U6 0312 OC 9/1/95 RW	
E1	X-REMOVE -(P555) ECR U2 0731 OC 5/11/92 RW	
E	ADD SELECT AREA ECR UO 0230 3-5-90 RW	
D	REVISE PER ECR U9 1189 11-28-89 TRM	
C	REV. & REDRAWN ECR U9 1602 GEP 6-13-88 RW	

DIMENSIONS SHOWN METRIC (INCH)	
UNLESS OTHERWISE SPECIFIED	TOLERANCES ANGULAR ± .001°
INCH	METRIC
3 PLACE ± .010	---
2 PLACE ± .014	± 0.25
1 PLACE ---	± 0.35

TITLE	CRIMP TERMINAL, FEMALE, .125/(3.17) DIA 10-14 AWG .180/(4.57) DIA. INSUL.
PART NO.	SD-1901-1*
MOLEX INCORPORATED	SHEET NO. 1 OF 1
L1SLEJLL. 60532 U.S.A.	DATE 6/30/88
DRWG. NO.	

DRWG. BY: RAS	CHKD. BY: RW	SCALE: 4 : 1	FILE NAME: S1901LX1.DWG	DRWG. NO.: SD-1901-1*	REV.:	SIZE:
---------------	--------------	--------------	-------------------------	-----------------------	-------	-------