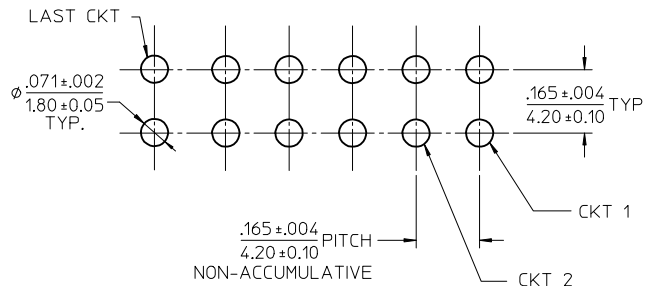
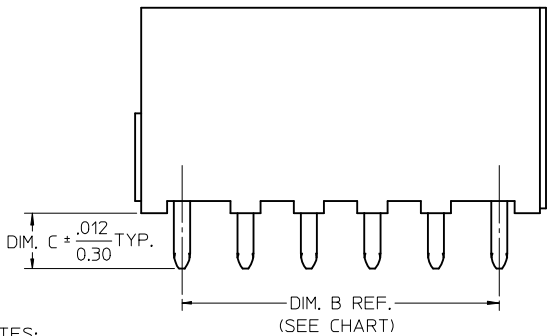
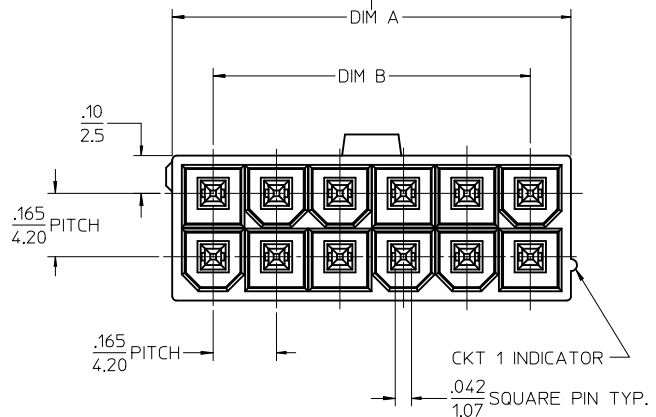
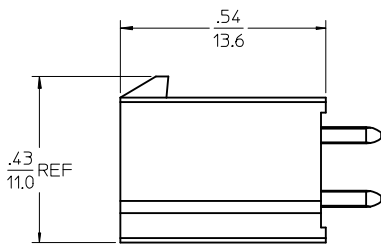
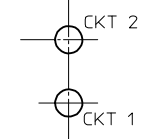


ISOMETRIC VIEW  
(12 CKT - SHOWN)

CKT SIZE	DIM. A	DIM. B
02	0.21/5.4	NA
04	0.38/9.6	0.165/4.20
06	0.54/13.8	0.331/8.40
08	0.71/18.0	0.496/12.60
10	0.87/22.2	0.661/16.80
12	1.04/26.4	0.827/21.00
14	1.21/30.6	0.992/25.20
16	1.37/34.8	1.160/29.40
18	1.54/39.0	1.323/33.60
20	1.70/43.2	1.488/37.80
22	1.87/47.4	1.654/42.00
24	2.03/51.6	1.819/46.20



LAYOUT FOR  
4-24 CIRCUITS



LAYOUT FOR  
2 CIRCUIT

RECOMMENDED PCB HOLE LAYOUT COMPONENT SIDE

- NOTES:
- MATERIALS:  
HOUSING - GLASS FILLED LCP UL94V-0, COLOR: SEE CHART  
TERMINAL - BRASS
  - TERMINAL PLATING:  
TIN= .000100/0.00254 MIN. MATTE TIN OVER  
.000050/0.00127 MIN. NICKEL  
GOLD=.000030/0.00076 MIN. SELECT GOLD OVER  
.000100/0.00254 MIN. SELECT MATTE TIN  
OVER .000050/0.00127 MIN. NICKEL OVERALL.
  - PRODUCT SPECIFICATION: PS-46207-001
  - PACKAGING SPECIFICATION: TRAY PACK PER: PK-46207-001 UNLESS NOTED.  
TAPE AND REEL PACK PER: PK-46207-002
  - PART CONFORMS TO CLASS "B" REQUIREMENTS OF COSMETIC SPECIFICATION PS-45499-002.
  - PARTS ARE NOT DESIGNED FOR CURRENT SHARING.
  - CONNECTORS ARE NOT TO BE MATED AND UNMATED WHILE CIRCUITS ARE LIVE.

RELEASE 46207-4006 IEC NO: UCP2015-2143 DRWN: DFOX 2014/11/20 CHKD: JBELL 2014/11/20 APPR: FSMITH 2015/03/26	QUALITY SYMBOLS ∇=0 ∇=0 ∇=0	GENERAL TOLERANCES (UNLESS SPECIFIED)		DIMENSION STYLE IN/MM		SCALE 4:1	DESIGN UNITS METRIC	THIRD ANGLE PROJECTION		
		4 PLACES ± --- ± ---	3 PLACES ± --- ± .005	2 PLACES ± 0.13 ± .010	1 PLACE ± 0.25 ± ---	0 PLACE ± --- ± ---	DRAWN BY DATE LSCHMIDT 2007/12/14		MINI-FIT RTC HI-TEMP VERTICAL HEADER IN LCP, W/O PCB PEGS <b>molex</b> DOCUMENT NO. SD-46207-002 SHEET NO. 1 OF 3	
		ANGULAR ±1/2°					CHECKED BY DATE JBELL 2007/12/17			
		DRAFT WHERE APPLICABLE MUST REMAIN WITHIN DIMENSIONS					APPROVED BY DATE FSMI THROEMER 2007/12/18			
SIZE C					MATERIAL NO. SEE CHART					

GOLD PLATING		COLOR=BLACK			
CKT SIZE	TAPE & REEL MATERIAL NUMBER	TRAY PACK MATERIAL NUMBER	DIM. C	PCB THK.	
02	462078002	* 462076002	* 0.144/3.66	0.062	
04	462078004	* 462076004	* 0.144/3.66	0.062	
06	462078006	* 462076006	* 0.144/3.66	0.062	
08	462078008	* 462076008	* 0.144/3.66	0.062	
10	462078010	* 462076010	* 0.144/3.66	0.062	
12	462078012	* 462076012	* 0.144/3.66	0.062	
14	462078014	* 462076014	* 0.144/3.66	0.062	
16	462078016	* 462076016	* 0.144/3.66	0.062	
18	462078018	* 462076018	* 0.144/3.66	0.062	
20	462078020	* 462076020	* 0.144/3.66	0.062	
22	462078022	* 462076022	* 0.144/3.66	0.062	
24	462078024	* 462076024	* 0.144/3.66	0.062	
02					
04					
06					
08					
10					
12					
14					
16					
18					
20					
22					
24					

TIN PLATING		COLOR=BLACK			
CKT SIZE	TAPE & REEL MATERIAL NUMBER	TRAY PACK MATERIAL NUMBER	DIM. C	PCB THK.	
02	462074002	* 462071002	* 0.144/3.66	0.062	
04	462074004	* 462071004	* 0.144/3.66	0.062	
06	462074006	* 462071006	* 0.144/3.66	0.062	
08	462074008	* 462071008	* 0.144/3.66	0.062	
10	462074010	* 462071010	* 0.144/3.66	0.062	
12	462074012	* 462071012	* 0.144/3.66	0.062	
14	462074014	* 462071014	* 0.144/3.66	0.062	
16	462074016	* 462071016	* 0.144/3.66	0.062	
18	462074018	* 462071018	* 0.144/3.66	0.062	
20	462074020	* 462071020	* 0.144/3.66	0.062	
22	462074022	* 462071022	* 0.144/3.66	0.062	
24	462074024	* 462071024	* 0.144/3.66	0.062	
02		462071102	* 0.176/4.46	0.093	
04		462071104	0.176/4.46	0.093	
06		462071106	0.176/4.46	0.093	
08		462071108	0.176/4.46	0.093	
10		462071110	0.176/4.46	0.093	
12		462071112	0.176/4.46	0.093	
14		462071114	* 0.176/4.46	0.093	
16		462071116	* 0.176/4.46	0.093	
18		462071118	* 0.176/4.46	0.093	
20		462071120	* 0.176/4.46	0.093	
22		462071122	* 0.176/4.46	0.093	
24		462071124	0.176/4.46	0.093	
02		462071202	* 0.207/5.26	0.125	
04		462071204	0.207/5.26	0.125	
06		462071206	0.207/5.26	0.125	
08		462071208	0.207/5.26	0.125	
10		462071210	0.207/5.26	0.125	
12		462071212	0.207/5.26	0.125	
14		462071214	* 0.207/5.26	0.125	
16		462071216	* 0.207/5.26	0.125	
18		462071218	* 0.207/5.26	0.125	
20		462071220	* 0.207/5.26	0.125	
22		462071222	* 0.207/5.26	0.125	
24		462071224	0.207/5.26	0.125	

02		462076602	* .278/7.06	0.250	
04		462076604	* .278/7.06	0.250	
06		462076606	* .278/7.06	0.250	
08		462076608	* .278/7.06	0.250	
10		462076610	* .278/7.06	0.250	
12		462076612	* .278/7.06	0.250	
14		462076614	* .278/7.06	0.250	
16		462076616	* .278/7.06	0.250	
18		462076618	* .278/7.06	0.250	
20		462076620	* .278/7.06	0.250	
22		462076622	* .278/7.06	0.250	
24		462076624	* .278/7.06	0.250	

TRAY PACKAGED PER PK-5569-003

\* DESIGNATES PART NOT RELEASED. CONTACT FACTORY FOR AVAILABILITY.

\* DESIGNATES PART NOT RELEASED. CONTACT FACTORY FOR AVAILABILITY.

SEE SHEET 1 EC NO: UCP2015-2143 DRWN: JDFOX 2014/11/20 CHKD: JBELL 2014/11/20 APPR: FSMITH 2015/03/26	QUALITY SYMBOLS	GENERAL TOLERANCES (UNLESS SPECIFIED)	DIMENSION STYLE	SCALE	DESIGN UNITS	THIRD ANGLE PROJECTION
	▽=0	mm INCH	IN/MM	1:1	METRIC	
	▽=0	4 PLACES ± --- ± ---	DRAWN BY DATE	TITLE		
	▽=0	3 PLACES ± --- ±.005	LSCHMIDT 2007/12/14	MINI-FIT RTC HI-TEMP VERTICAL HEADER IN LCP, W/O PCB PEGS		
	2 PLACES ± 0.13 ±.010	CHECKED BY DATE	molex			
	1 PLACE ± 0.25 ± ---	JBELL 2007/12/17	SD-46207-002			
	0 PLACE ± --- ± ---	APPROVED BY DATE	SHEET NO. 2 OF 3			
		FSMI THROEMER 2007/12/18	INCORPORATED AND SHOULD NOT BE USED WITHOUT WRITTEN PERMISSION			
		MATERIAL NO.				
		SEE CHART				
		ANGULAR ±1/2°				
		DRAFT WHERE APPLICABLE MUST REMAIN WITHIN DIMENSIONS				

		TIN PLATING		COLOR=NATURAL		
CKT SIZE	TAPE & REEL MATERIAL NUMBER	TRAY PACK MATERIAL NUMBER	DIM. C	PCB THK.		
02	462074302	*	462071302	*	0.144/3.66	0.062
04	462074304	*	462071304	*	0.144/3.66	0.062
06	462074306	*	462071306	*	0.144/3.66	0.062
08	462074308	*	462071308	*	0.144/3.66	0.062
10	462074310	*	462071310	*	0.144/3.66	0.062
12	462074312	*	462071312	*	0.144/3.66	0.062
14	462074314	*	462071314	*	0.144/3.66	0.062
16	462074316	*	462071316	*	0.144/3.66	0.062
18	462074318	*	462071318	*	0.144/3.66	0.062
20	462074320	*	462071320	*	0.144/3.66	0.062
22	462074322	*	462071322	*	0.144/3.66	0.062
24	462074324	*	462071324	*	0.144/3.66	0.062
02				*	0.176/4.46	0.093
04				*	0.176/4.46	0.093
06				*	0.176/4.46	0.093
08				*	0.176/4.46	0.093
10				*	0.176/4.46	0.093
12				*	0.176/4.46	0.093
14				*	0.176/4.46	0.093
16				*	0.176/4.46	0.093
18				*	0.176/4.46	0.093
20				*	0.176/4.46	0.093
22				*	0.176/4.46	0.093
24				*	0.176/4.46	0.093
02				*	0.207/5.26	0.125
04				*	0.207/5.26	0.125
06				*	0.207/5.26	0.125
08				*	0.207/5.26	0.125
10				*	0.207/5.26	0.125
12				*	0.207/5.26	0.125
14				*	0.207/5.26	0.125
16				*	0.207/5.26	0.125
18				*	0.207/5.26	0.125
20				*	0.207/5.26	0.125
22				*	0.207/5.26	0.125
24				*	0.207/5.26	0.125

\* DESIGNATES PART NOT RELEASED.  
CONTACT FACTORY FOR AVAILABILITY.

SEE SHEET 1 EC NO: UCP2015-2143 DRWN: JDOX CHKD: JBELL APPR: FSMITH	2014/11/20 2014/11/20 2015/03/26	DESCRIPTION REV	QUALITY SYMBOLS	GENERAL TOLERANCES (UNLESS SPECIFIED)	DIMENSION STYLE	SCALE	DESIGN UNITS	THIRD ANGLE PROJECTION
			▽=0	mm INCH	IN/MM	1:1	METRIC	
			▽=0	4 PLACES ± --- ± ---	DRAWN BY DATE	TITLE	MINI-FIT RTC HI-TEMP VERTICAL HEADER IN LCP, W/O PCB PEGS	
			▽=0	3 PLACES ± --- ±.005	LSCHMIDT 2007/12/14			
	2 PLACES ± 0.13 ±.010	CHECKED BY DATE	DOCUMENT NO. SD-46207-002 SHEET NO. 3 OF 3					
	1 PLACE ± 0.25 ± ---	JBELL 2007/12/17						
	0 PLACE ± --- ± ---	APPROVED BY DATE	THIS DRAWING CONTAINS INFORMATION THAT IS PROPRIETARY TO MOLEX INCORPORATED AND SHOULD NOT BE USED WITHOUT WRITTEN PERMISSION					
		FSMI THROEMER 2007/12/18						
			ANGULAR ±1/2°	MATERIAL NO.				
			DRAFT WHERE APPLICABLE MUST REMAIN WITHIN DIMENSIONS	SEE CHART				