

Mayhew Labs

Go Between Shield User's Guide

1 Determine what pins conflict on your shields and decide what pins to use in their place.

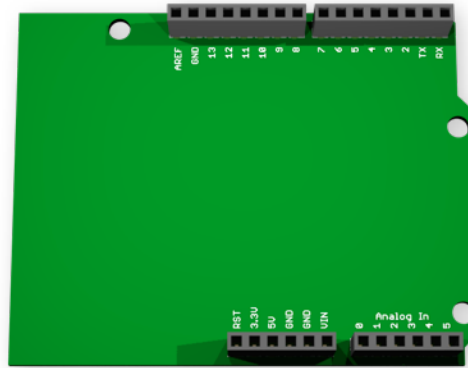
2 For the top shield's pins that get rearranged, put solder jumpers where the pins should be switched to on the bottom shield.

3 Place solder jumpers for the pins that should pass directly through from bottom to top - forming a diagonal.

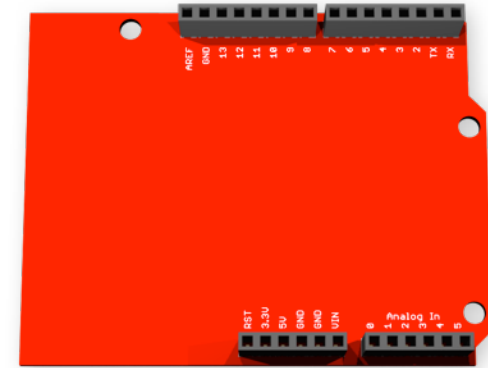
4 Modify your code that interacts with the top shield to use the new pins in place of the old pins.

Tip: solder wick makes removing solder jumpers easy. Place some between a hot soldering iron and the jumper you want to remove and watch it get wicked away!

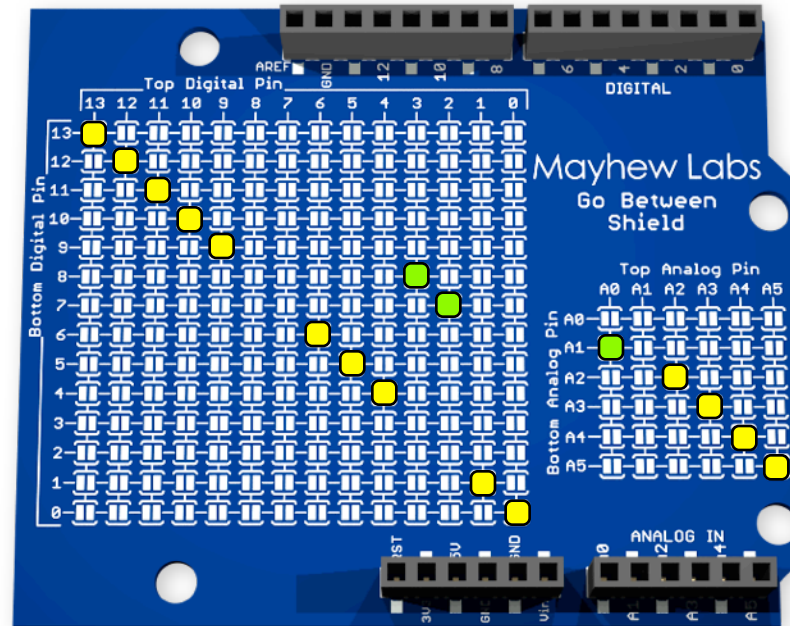
Example Use:



Shield A uses:
• Digital 2,3,4,10
• Analog 0,3



Shield B uses:
• Digital 2,3,5,6
• Analog 0,4



Shield A now uses:
• Digital 7,8,4,10
• Analog 1,3

Shield B still uses:
• Digital 2,3,5,6
• Analog 0,4

*Digital 2,3 and Analog 0 will not be accessible from the top

