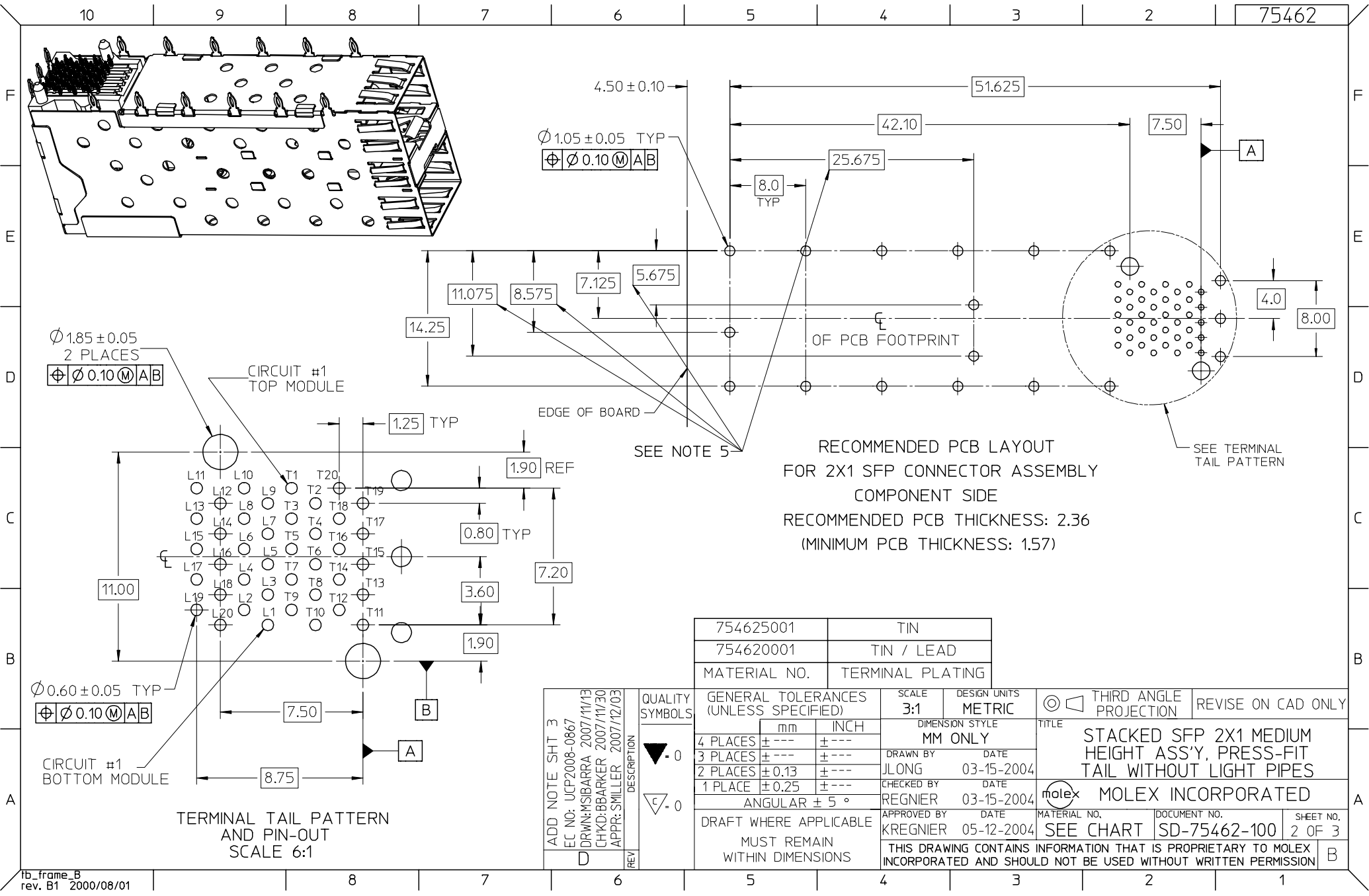


- NOTES:
1. MATERIAL:
 CAGE: NICKEL SILVER, THICKNESS: 0.25MM
 SFP HOUSING: GLASS FILLED HIGH TEMP PLASTIC,
 UL: 94 V-0, COLOR: BLACK
 OVER-MOLDED TERMINALS: GLASS FILLED HIGH TEMP PLASTIC,
 UL: 94 V-0, COLOR: BLACK
 TERMINALS: BRASS
 2. FINISH:
 TERMINALS:
 CONTACT AREA: 0.76 MICRONS MIN. HARD GOLD
 OVER 1.27 MICRONS MIN. NICKEL.
 COMPLIANT TAIL - TIN/LEAD OPTION: 0.76 - 1.52 MICRONS 90/10 TIN/LEAD
 OVER 0.76 - 1.52 MICRONS NICKEL.
 COMPLIANT TAIL - TIN OPTION: 0.76 - 1.52 MICRONS TIN
 OVER 0.76 - 1.52 MICRONS NICKEL.
 3. REFER TO PS-75310-001 FOR ALL ELECTRICAL,
 MECHANICAL AND ENVIRONMENTAL SPECIFICATIONS.
 4. REFER TO PK-75462-001 FOR ALL PACKAGING SPECIFICATIONS.
 5. THE CURVED TAILS THAT GO INTO THE HOLES LOCATED BY THESE DIMENSIONS
 ARE BEING ELIMINATED. TO ACCOMMODATE THIS CONVERSION, IT IS RECOMMENDED
 THAT BOARDS DESIGNED TO THIS PRINT REVISION INCLUDE THESE HOLES.

| | | | | | | | | | |
|--|-----------------------------------|--|--|---|----------------------|---|--------------------|---------------------------|--|
| ADD NOTE SHT 3 EC NO: UCP2008-0867 DRWN: MSIBARRA 2007/11/13 CHKD: BBARKER 2007/11/30 APPR: SMILLER 2007/12/03 | QUALITY SYMBOLS ▽ - 0 ▽ - 0 | GENERAL TOLERANCES (UNLESS SPECIFIED) | | SCALE 3:1 | DESIGN UNITS METRIC | THIRD ANGLE PROJECTION | REVISE ON CAD ONLY | | |
| | | | | DIMENSION STYLE MM ONLY | | TITLE STACKED SFP 2X1 MEDIUM HEIGHT ASS'Y, PRESS-FIT TAIL WITHOUT LIGHT PIPES | | | |
| | | | | 4 PLACES ± --- ± --- | 3 PLACES ± --- ± --- | DRAWN BY JLONG | DATE 03-15-2004 | MATERIAL NO. SEE CHART | |
| | | | | 2 PLACES ± 0.13 ± --- | 1 PLACE ± 0.25 ± --- | CHECKED BY REGNIER | DATE 03-15-2004 | DOCUMENT NO. SD-75462-100 | |
| | | ANGULAR ± 5 ° | | APPROVED BY KREGNIER | | DATE 05-12-2004 | SHEET NO. 1 OF 3 | | |
| | | DRAFT WHERE APPLICABLE MUST REMAIN WITHIN DIMENSIONS | | THIS DRAWING CONTAINS INFORMATION THAT IS PROPRIETARY TO MOLEX INCORPORATED AND SHOULD NOT BE USED WITHOUT WRITTEN PERMISSION | | | | | |



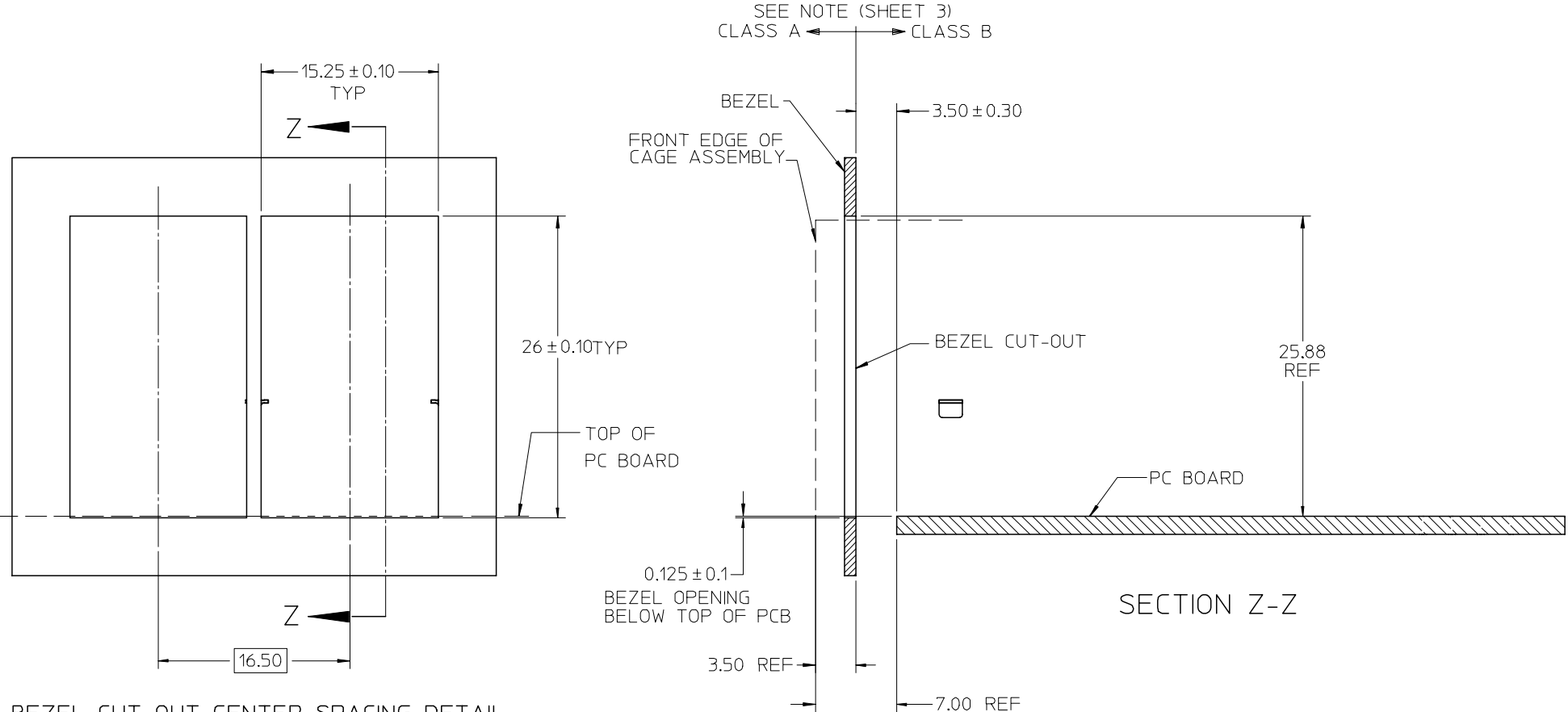
| | |
|--------------|------------------|
| 754625001 | TIN |
| 754620001 | TIN / LEAD |
| MATERIAL NO. | TERMINAL PLATING |

| | |
|--|-----------------|
| ADD NOTE SHT 3 EC NO: UCP2008-0867 DRWN: MSIBARRA 2007/11/13 CHKD: BBARKER 2007/11/30 APPR: SMILLER 2007/12/03 | QUALITY SYMBOLS |
| | DESCRIPTION |
| REV | |

| | |
|---------------------------------------|--------------|
| GENERAL TOLERANCES (UNLESS SPECIFIED) | |
| | mm INCH |
| 4 PLACES | ± --- ± --- |
| 3 PLACES | ± --- ± --- |
| 2 PLACES | ± 0.13 ± --- |
| 1 PLACE | ± 0.25 ± --- |
| ANGULAR ± 5 ° | |
| DRAFT WHERE APPLICABLE | |
| MUST REMAIN WITHIN DIMENSIONS | |

| | |
|-------------------------|---------------------|
| SCALE 3:1 | DESIGN UNITS METRIC |
| DIMENSION STYLE MM ONLY | |
| DRAWN BY | DATE |
| JLONG | 03-15-2004 |
| CHECKED BY | DATE |
| REGNIER | 03-15-2004 |
| APPROVED BY | DATE |
| KREGNIER | 05-12-2004 |

| | |
|---|---------------------------|
| THIRD ANGLE PROJECTION | REVISE ON CAD ONLY |
| TITLE | |
| STACKED SFP 2X1 MEDIUM HEIGHT ASS'Y, PRESS-FIT TAIL WITHOUT LIGHT PIPES | |
| MOLEX INCORPORATED | |
| MATERIAL NO. SEE CHART | DOCUMENT NO. SD-75462-100 |
| SHEET NO. 2 OF 3 | |



BEZEL CUT-OUT CENTER SPACING DETAIL
BEZEL THICKNESS 0.8 - 2.6

NOTE:
PART COMPLIES WITH COSMETIC SPECIFICATION PS-45499-002.
SEE SECTION Z-Z FOR SURFACE CLASSIFICATIONS.
UNDERSIDE OF CAGE COMPLIES WITH CLASS 'C'.

| | | | | | | | | | |
|--|-----------------------------------|---------------------------------------|---|--|-------------------------|------------------------|---|------------------|--|
| ADD NOTE EC NO: UCP2008-0867 DRWN: MSIBARRA 2007/11/13 CHKD: BBARKER 2007/11/30 APPR: SMILLER 2007/12/03 | QUALITY SYMBOLS ▽ = 0 ▽ = 0 | GENERAL TOLERANCES (UNLESS SPECIFIED) | | SCALE 3:1 | DESIGN UNITS METRIC | THIRD ANGLE PROJECTION | REVISE ON CAD ONLY | | |
| | | | mm | INCH | DIMENSION STYLE MM ONLY | | TITLE | | |
| | | 4 PLACES | ± --- | ± --- | DRAWN BY JLONG | DATE 03-15-2004 | STACKED SFP 2X1 MEDIUM HEIGHT ASS'Y, PRESS-FIT TAIL WITHOUT LIGHT PIPES | | |
| | | 3 PLACES | ± --- | ± --- | CHECKED BY REGNIER | DATE 03-15-2004 | MOLEX INCORPORATED | | |
| | 2 PLACES | ± 0.13 | ± --- | APPROVED BY KREGNIER | DATE 05-12-2004 | MATERIAL NO. SEE CHART | DOCUMENT NO. SD-75462-100 | SHEET NO. 3 OF 3 | |
| | 1 PLACE | ± 0.25 | ± --- | DRAFT WHERE APPLICABLE MUST REMAIN WITHIN DIMENSIONS | | | | B | |
| | ANGULAR ± 5 ° | | THIS DRAWING CONTAINS INFORMATION THAT IS PROPRIETARY TO MOLEX INCORPORATED AND SHOULD NOT BE USED WITHOUT WRITTEN PERMISSION | | | | | | |