


UEGH 40/2

Order No.: 2757131

The illustration shows version UEGH 40/1

<http://eshop.phoenixcontact.de/phoenix/treeViewClick.do?UID=2757131>Electronic housing, double-level, fully equipped with 12 screw
connections per side for two printed circuit boards

Commercial data	
GTIN (EAN)	 4 017918 104825
sales group	F013
Pack	10 pcs.
Customs tariff	85369010
Catalog page information	Page 565 (CC-2009)

Product notesWEEE/RoHS-compliant since:
01/01/2003

<http://www.download.phoenixcontact.com>
Please note that the data given here has been taken from the online catalog. For comprehensive information and data, please refer to the user documentation. The General Terms and Conditions of Use apply to Internet downloads.

Technical data	
General	
Housing type	Complete housing
Housing material	Polyamide (PA 6.6)
Color	green

Dimensions / positions

Length	79 mm
Width	40 mm
Number of positions	24
Pitch	5 mm

Technical data

Ambient temperature (operation)	-40 °C ... 105 °C
Connection in acc. with standard	CUL
Nominal voltage U_N	300 V
Nominal current I_N	10 A
AWG/kcmil	30-12
Indicator1	CUL1
Inflammability class acc. to UL 94	V0
Power dissipation at 20°C in the horizontal mounting position	6.1 W 9.1 W

Connection data

Conductor cross section solid min.	0.2 mm ²
Conductor cross section solid max.	4 mm ²
Conductor cross section stranded min.	0.2 mm ²
Conductor cross section stranded max.	2.5 mm ²
Conductor cross section AWG/kcmil min.	24
Conductor cross section AWG/kcmil max	12
Stripping length	8 mm

Certificates / Approvals

Certification

CUL, GOST, UL

Accessories

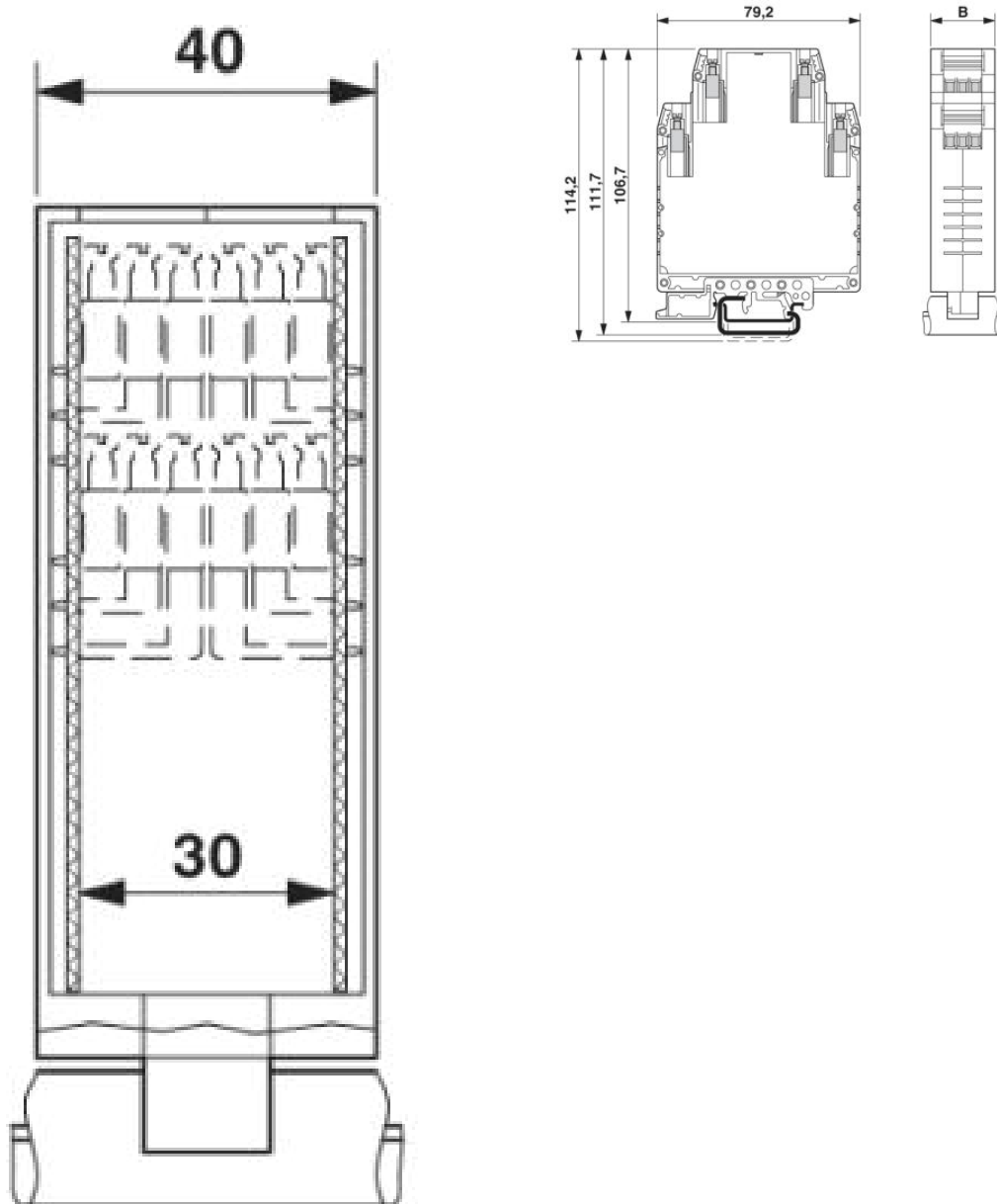
Item	Designation	Description
------	-------------	-------------

Bridges

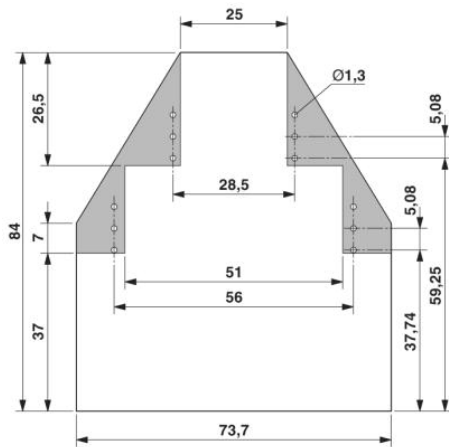
2820929	DB 50- 90 GY	Wire bridge, Color: gray
---------	--------------	--------------------------

Diagrams/Drawings

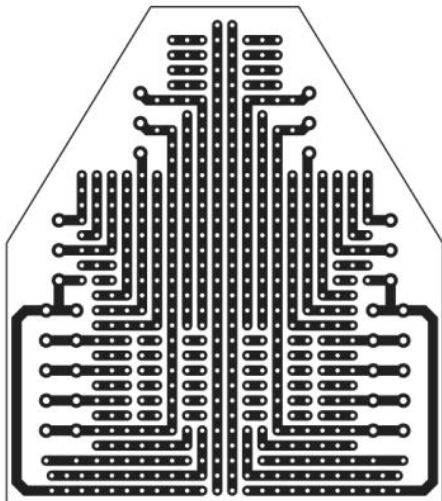
Dimensioned drawing



Enlarged internal area, for 2 PCBs, 24 positions



Schematic diagram



Address

PHOENIX CONTACT Deutschland GmbH
Flachmarktstr. 8
32825 Blomberg, Germany
Phone +49 5235 3 12000
Fax +49 5235 3 41200
<http://www.phoenixcontact.de>



© 2011 Phoenix Contact
Technical modifications reserved;