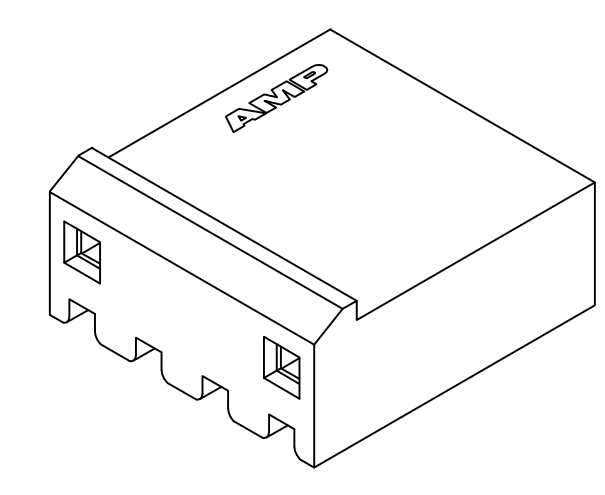
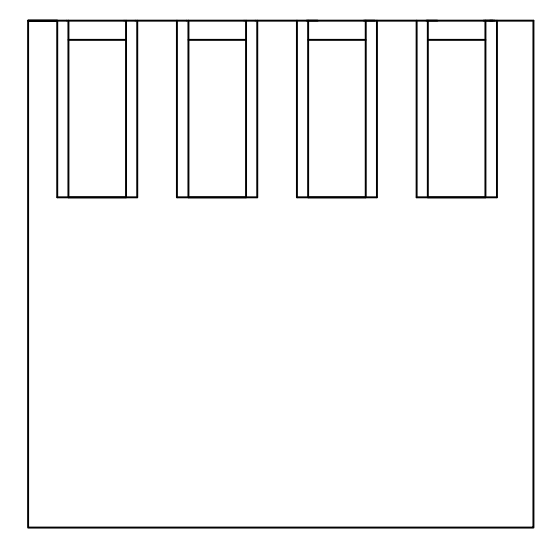
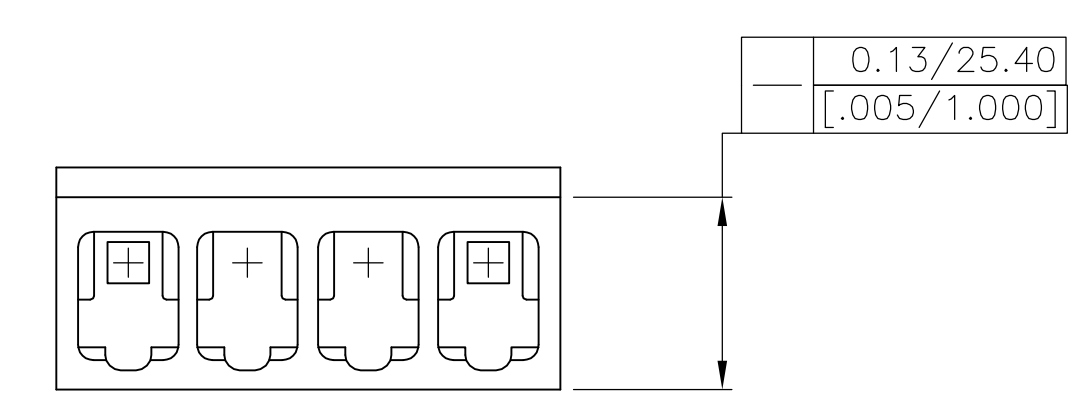
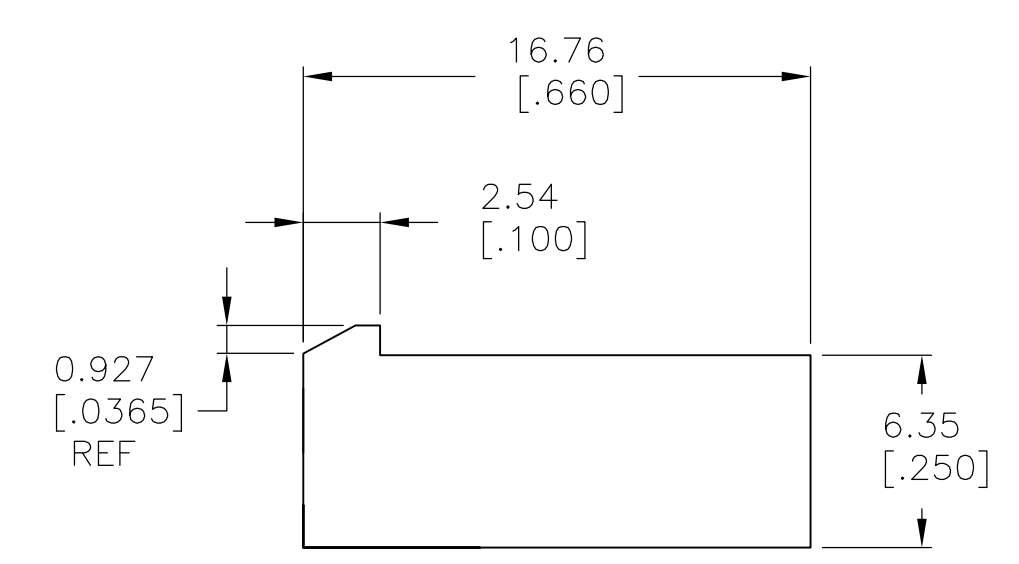
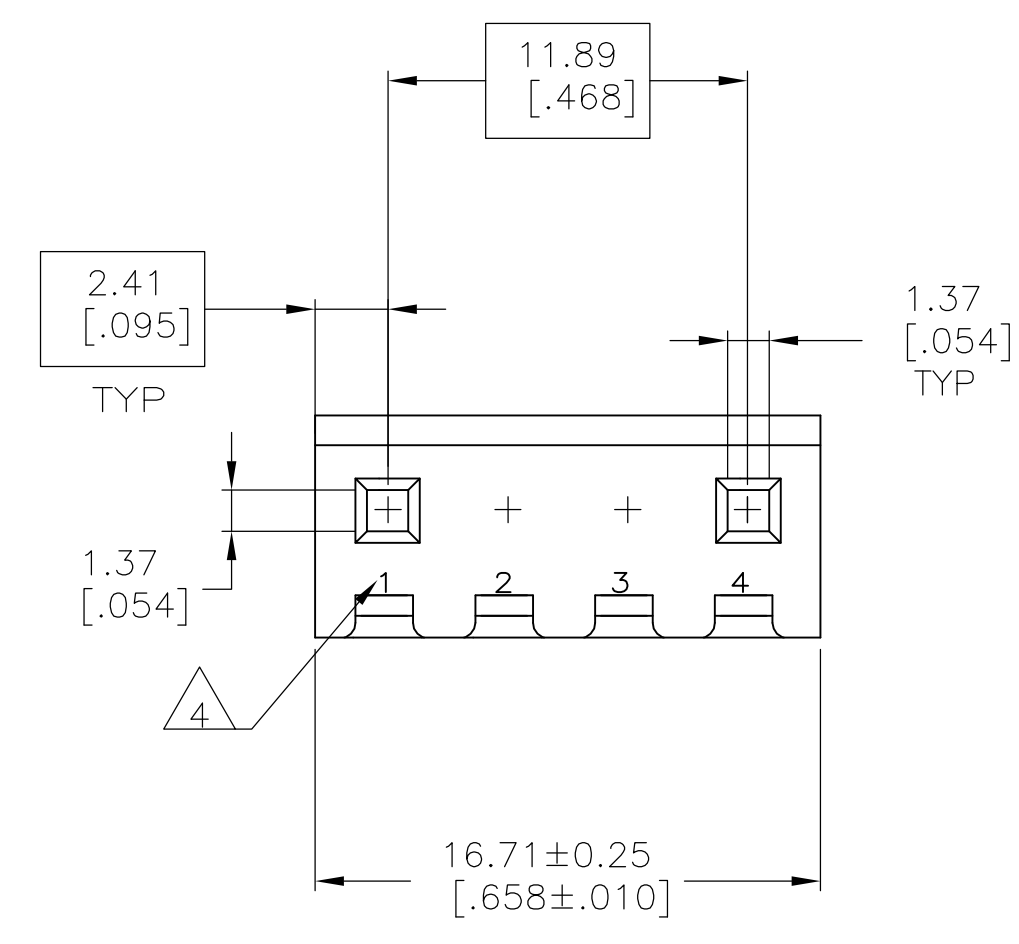


SCALE 10:1 $\triangle 6$

1. UNIT ACCEPTS 1.14 [.045] SQUARE OR ROUND POST.
2. UNIT ACCEPTS STANDARD SL-156 CONTACTS.
3. UNIT ACCEPTS KEYING PLUG 640254-1 AND KEYING PIN 640255-1.
- $\triangle 4$ CIRCUIT I.D. NUMBER(S), TO BE LOCATED SEQUENTIALLY AS SHOWN.
5. DIMENSIONS IN BRACKETS ARE IN INCHES.
- $\triangle 6$ OPTIONAL CONSTRUCTION (BOTH CORNERS) UP TO 0.38[.015].
7. ACCEPTS UP TO .110 INCH INSULATION WIRE.



3-DIMENSIONAL MODEL NTS

2 & 3	4	1744137-4
CIRCUIT NO BLOCKED	NO OF CIRCUITS	PART

THIS DRAWING IS A CONTROLLED DOCUMENT.		DWG	K. WHITAKER	16NOV2005	 TE Connectivity
DIMENSIONS: mm [INCHES]		CHK	D. ROSSI	16NOV2005	
TOLERANCES UNLESS OTHERWISE SPECIFIED:		APPV	D. ROSSI	16NOV2005	NAME
0 PLG	± -	PRODUCT SPEC		HOUSING WITH LOCKING RAMP, SL-156, FOR LARGE WIRE INSULATION	
1 PLG	± -	APPLICATION SPEC		SIZE	CAGE CODE
2 PLG	± -	MATERIAL		WEIGHT	DRAWING NO
3 PLG	± 0.13 [.005]	FINISH		RESTRICTED TO	
4 PLG	± -	MATERIAL		SCALE	SHEET
ANGLES	± 0° 30'	CUSTOMER DRAWING		1744137	1 OF 1
				REV	B