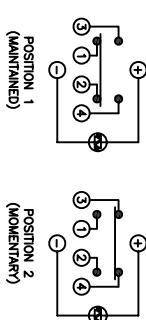


MAXIMUM PANEL THICKNESS: 0.315 [8.0mm]



SCHEMATIC

SPECIFICATIONS

FUNCTION: 1PNO OFF-(ON) + 1PNC ON-(OFF)

RATING:
2A 48VDC

ILLUMINATION VOLTAGE:
Forward: 2.8V 20mA (BLUE)
Reverse: 1.8V 20mA (YELLOW)

CONTACT RESISTANCE:
Initial: 50mΩ Max. at 1A 120DC
Insulation Resistance:
1,000kΩ Min. at 500VDC

DIELECTRIC STRENGTH:
2,000VAC Min. for 1 Minute

ELECTRICAL LIFE:
50,000 Cycles

MECHANICAL LIFE:
1,000,000 Cycles

TEMPERATURE:
Operating: -20°C to 70°C

INGRESS PROTECTION:
IP65

APPROVALS:
ROHS
COMPLIANT

MATERIALS

BUSHING:
Stainless Steel (304)

BASE:
Polyamide 6/6 (PA66)

ACTUATOR:
Stainless Steel (304)
Polycarbonate (PC)

HARDWARE:
Nickel Plated Brass (H59)

SEALING:
Silicone Rubber

INNER ASSEMBLY:
Polycarbonate (PC)
Polyoxymethylene (POM)
Brass (H62)
Stainless Steel (304)

SPRING:
Stainless Steel (304)

CONTACTS:
Silver/Cadmium Oxide (AgCdO)

TERMINALS:
Brass (H62)

O-RING:
Silicone Rubber

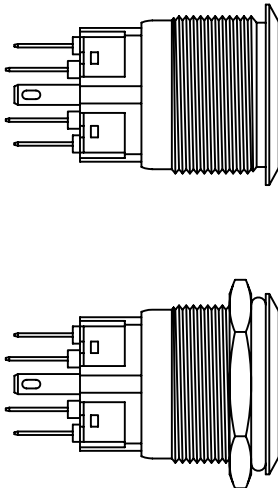
COLORS AND FINISH

BEZEL:
Stainless Steel
Machine Finish

ACTUATOR:
Stainless Steel
Machine Finish

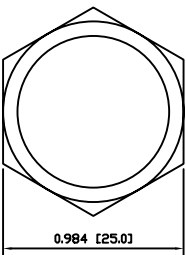
ILLUMINATION:
Blue (Forward)
Yellow (Reverse)

MARKING:
None



EXPLODED VIEW

ASSEMBLED VIEW

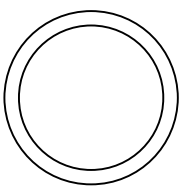


0.984 [25.0]

SUGGESTED PANEL CUTOUT

HEX NUT

O-RING



REV.	DATE	BY	CHK
A	09/07/23	CAB	
B	09/07/23	CAB	
C	09/13/23	CAB	
D	09/12/23	CAB	

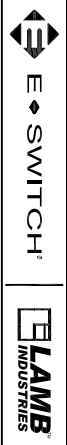
REV.	DATE	BY	CHK
A	09/07/23	CAB	
B	09/07/23	CAB	
C	09/13/23	CAB	
D	09/12/23	CAB	

THE INFORMATION CONTAINED IN THIS DOCUMENT IS PROPRIETARY TO E-SWITCH AND IS NOT TO BE COPIED OR TRANSMITTED IN ANY FORM OR BY ANY MEANS, ELECTRONIC OR MECHANICAL, INCLUDING PHOTOCOPYING, RECORDING, OR BY ANY INFORMATION STORAGE AND RETRIEVAL SYSTEM.

REV.	DATE	BY	CHK
A	04/27/12	RG	
B	04/27/12	RG	
C	04/27/12	RG	
D	04/27/12	RG	

REV.	DATE	BY	CHK
A	04/27/12	RG	
B	04/27/12	RG	
C	04/27/12	RG	
D	04/27/12	RG	

REV.	DATE	BY	CHK
A	APRIL 27 2012		
B			
C			
D			



PV7F2Y0SS-3Q1

52-PV7F2Y0SS3Q1