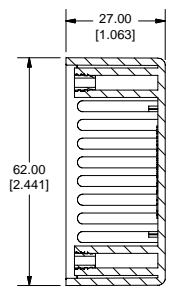
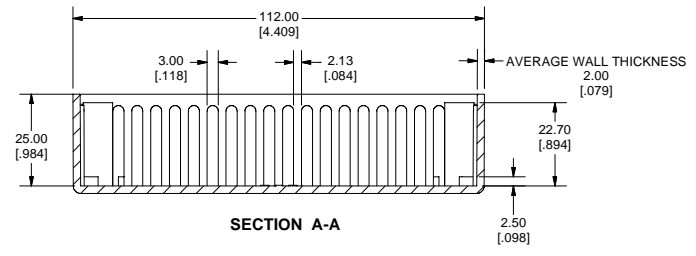
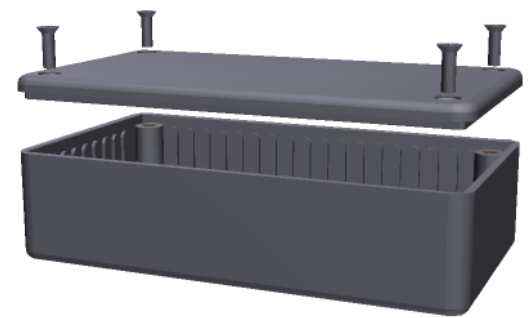


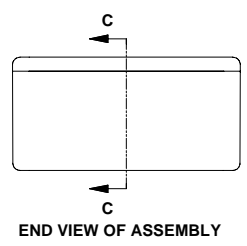
TOP VIEW OF BOX



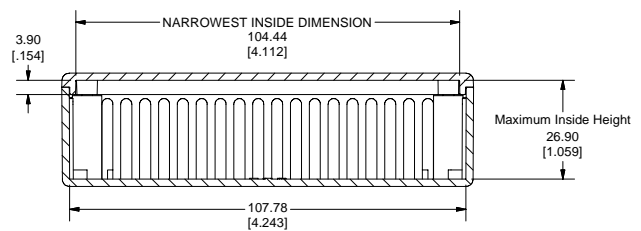
SECTION B-B



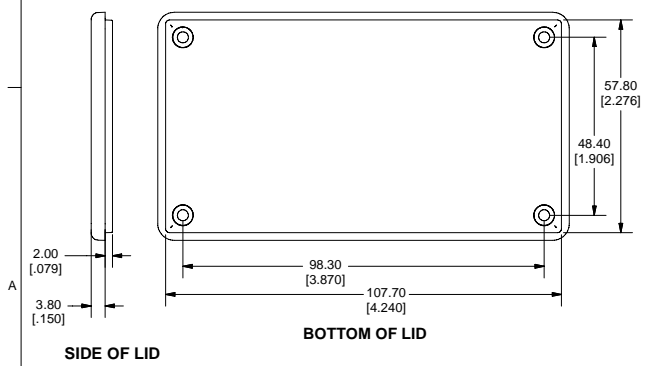
SECTION A-A



END VIEW OF ASSEMBLY

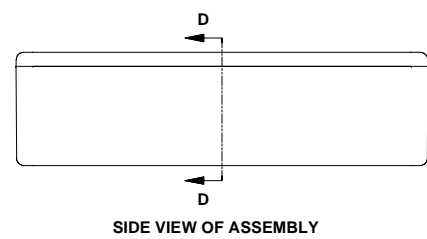


SECTION C-C

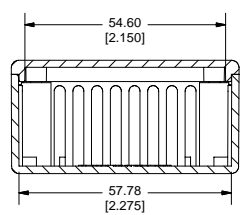


SIDE OF LID

BOTTOM OF LID



SIDE VIEW OF ASSEMBLY



SECTION D-D

Note:  
Enclosures can be Factory Modified ( Milling, Drilling, Printing etc. )  
Contact Factory [mjm@hammondmfg.com](mailto:mjm@hammondmfg.com) for quotes  
Solid models of this enclosure available in STEP or IGES Format.

PART NUMBERS		
1591B Enclosures		
Material	Colour	Part Number
FR ABS UL94 - V0	Beige	1591BBG
	Black	1591BBK
	Blue	1591BBU
	Grey	1591BGY
GP ABS	Black	1591BSBK
	Grey	1591BSGY
	Ice Blue	1591BTBU
Translucent Polycarbonate	IR Red	1591BTRD
	Crystal Clear	1591BTCL
Accessories		
	Description	Part Number
Universal Use	PC Board Card Adapters	See Accessories Section
	Clear Lids - clear, flame retardant polycarbonate - Lid ONLY	1591BC
FR ABS	Replacement Screws, Flat Head Phillips	1591MS100
	Nickel Plated Pkg of 100	1591MS100BK (Black) 1591TS100
GP ABS	Self Tapping Pkg of 100	1591TS100BK ( Black)
Recommended Torque on Fasteners (no lubrication)		
	M3 - 0.5 x 10mm Screws	30-40 cN*m
	#4 x 0.5 Screws	30-40 cN*m

**HAMMOND  
MANUFACTURING™**

**1591B**  
[www.hammondmfg.com](http://www.hammondmfg.com)