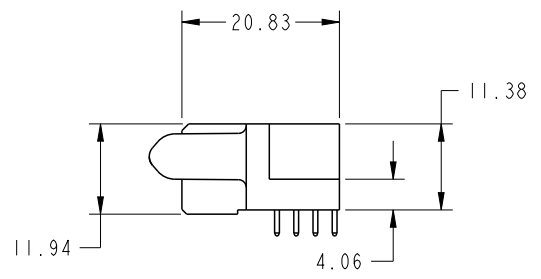
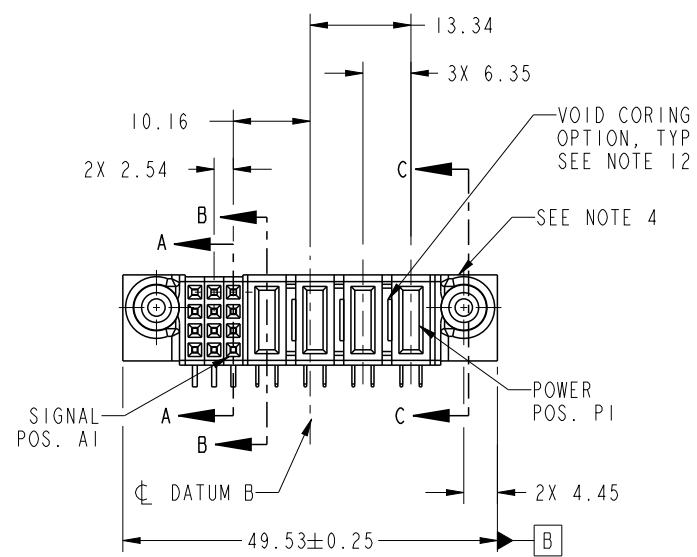




Copyright FCI.

PRODUCT NO. 51772-032-- NOTE 3	ROWS D C B A	SIGNAL				POWER				
		E2	3	2	1	P4	P3	P2	P1	E1
		H	H	H	H	PA	PC	PA	PC	
		G	G	G	G					
		F	F	F	F					
		E	E	E	E					



CODE	DIM "M" MATING LENGTH	CONTACT TYPE
PA	[1.07]	POWER
H	[N/A]	SIGNAL
G	[N/A]	SIGNAL
F	[N/A]	SIGNAL
E	[N/A]	SIGNAL
PC	[2.34]	POWER

spec ref	SEE NOTES		
tolerance std	TOLERANCES UNLESS OTHERWISE SPECIFIED		
SEE NOTES	linear	0.X	±0.50
		0.XX	±0.25
		0.XXX	±0.10
	angular	0°	±2°

dr	X Q Wang	2012/02/27
eng	Luo Weller	2012/09/16
chr	-	-
appr	Pei-Ming Zheng	2012/09/17

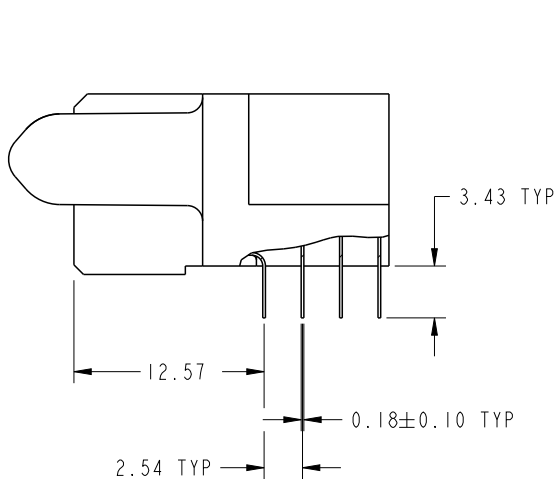
projection	
product family	PwrBlade

size	A4	scale	1:1
ecn no	-	rel level	Released

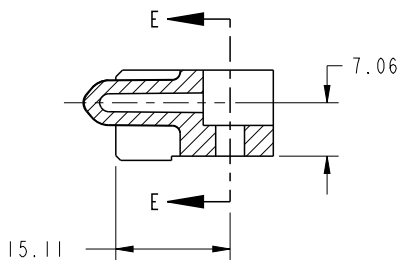
	title	4P + 12S R/A SOLDER RECEPTACLE	dwg no	51772-032	rev	A
www.fci.com	cat. no.	Product - Customer Drw	sheet 1 of 4			

PRODUCT NUMBER

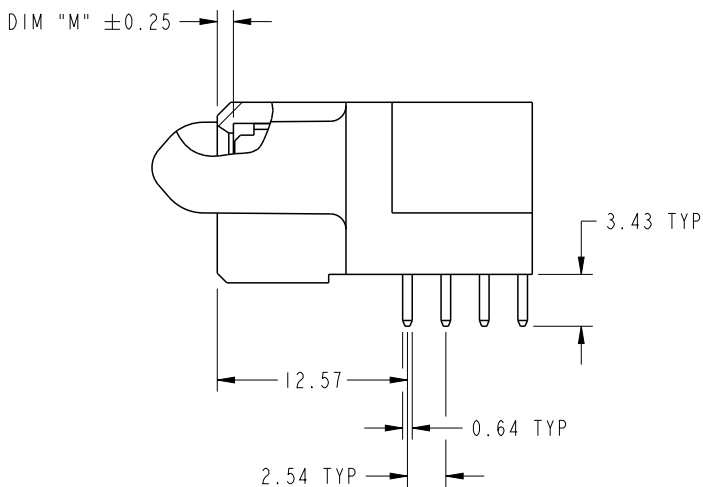
51772-032__
NOTE 3



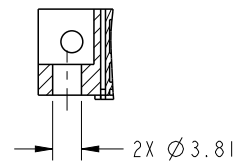
BROKEN-OUT SECTION A-A
SCALE 2:1



SECTION C-C



BROKEN-OUT SECTION B-B
SCALE 2:1

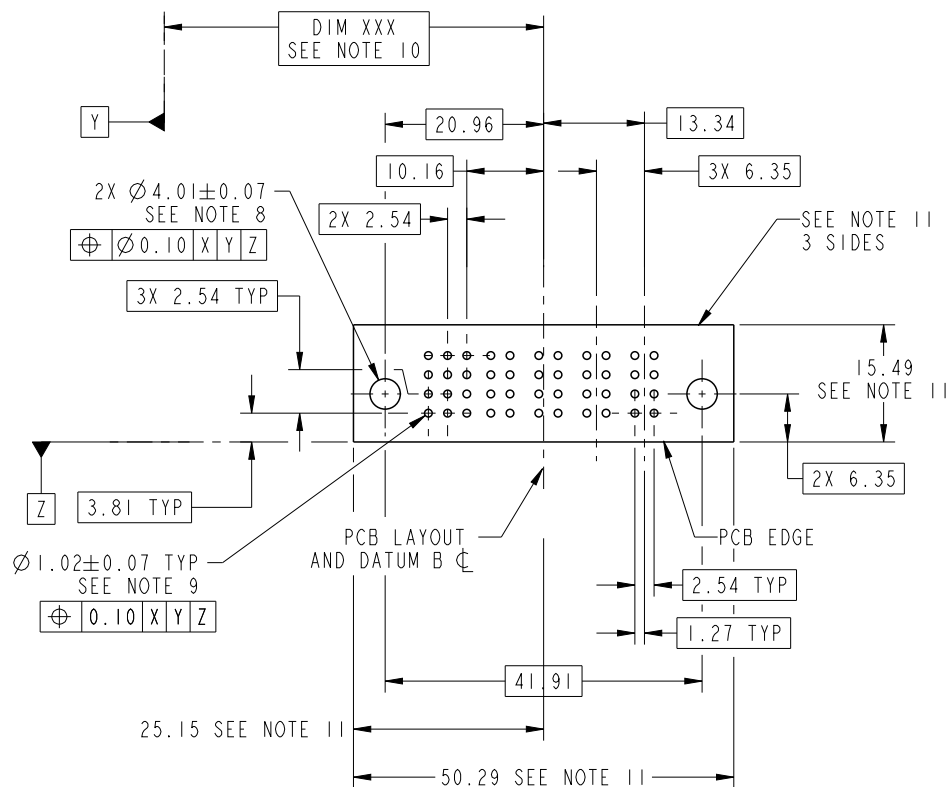


PARTIAL SECTION E-E

dr	X Q Wang	2012/02/27	projection 	MM ←————→	size	A4	scale	1:1
eng	Luo Weller	2012/09/16			ecn no	-		
chr	-	-			rel level	Released		
appr	Pei-Ming Zheng	2012/09/17	product family	PwrBlade	rev	51772-032	A	
	title	4P + 12S R/A SOLDER RECEPTACLE		dwg no				
www.fci.com	cat. no.	Product - Customer Drw			sheet 2 of 4			

PRODUCT NUMBER

51772-032__
NOTE 3



RECOMMENDED PCB LAYOUT

dr	X Q Wang	2012/02/27	projection 	MM 	size	A4	scale	1:1
eng	Luo Weller	2012/09/16			ecn no	-		
chr	-	-			rel level	Released		
appr	Pei-Ming Zheng	2012/09/17	product family	PwrBlade	rel level	Released		
	title	4P + 12S R/A SOLDER RECEPTACLE		dwg no	51772-032		rev	A
www.fci.com	cat. no.	Product - Customer Drw			sheet 3 of 4			

PRODUCT NUMBER

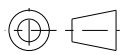
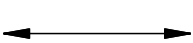

51772-032--
NOTE 3

NOTES:

1. DIMENSIONS AND TOLERANCES ARE IN ACCORDANCE WITH ASME Y14.5M, 1994 UNLESS OTHERWISE SPECIFIED.

CONNECTOR NOTES:

- 2. HOUSING MATERIAL: UL 94 V-0 GLASS FILLED HIGH-TEMP THERMOPLASTIC
POWER CONTACT MATERIAL: COPPER ALLOY
SIGNAL PIN MATERIAL: COPPER ALLOY
 - 3. SEE ITEM 5 & 6 IN PRINT 10064183 FOR PLATING SPEC OF 51772-032 AND 51772-032LF RESPECTIVELY.
 - 4. MANUFACTURER'S NAME, DATE CODE AND OPTIONAL P/N TO APPEAR ON THIS SURFACE. THE P/N CAN BE OMITTED IF THERE IS NOT ENOUGH SPACE ON THIS SURFACE.
 - 5. PRODUCT SPECIFICATION GS-12-149.
APPLICATION SPECIFICATION BUS-20-067.
 - 6. PACKAGED IN TRAYS.
- PCB NOTES:
- 7. ALL HOLE DIAMETERS ARE FINISHED HOLE SIZE.
 - 8. MOUNTING HOLES, WHERE APPLICABLE, ARE UNPLATED.
 - 9. $\varnothing 1.151 \pm 0.025$ DRILLED HOLES PLATED WITH
0.008 MIN SnPb OR Sn OVER 0.03
TO 0.08 Cu PLATING TO ACHIEVE
 $\varnothing 1.02 \pm .07$ HOLE.
 - 10. "DIM XXX" TO BE DETERMINED BY THE CUSTOMER.
 - 11. CONNECTOR KEEP-OUT ZONE.
 - 12. THE VOID CORING IN BETWEEN POWER MODULES, SIGNAL MODULES AND END MODULES ARE OPTIONAL AND THE SHAPE MAY BE DIFFERENT FOR OPTIMIZE THE MOLDING PROCESS. THE VOID CORING WILL NOT EFFECT TO PRODUCT FUNCTION.

dr	X Q Wang	2012/02/27	projection 	MM 	size	A4	scale	1:1
eng	Luo Weller	2012/09/16			ecn no	-		
chr	-	-			product family	PwrBlade	rel level	Released
appr	Pei-Ming Zheng	2012/09/17			title 4P + 12S R/A SOLDER RECEPTACLE	dwg no 51772-032	rev A	
www.fci.com		cat. no.	Product - Customer Drw			sheet 4 of 4		



Copyright FCI.